

# CENTURY LINE



## NEW LINE OF WINDOW AND DOOR HANDLES

New modern design and new movement mechanisms  
Available in a base-less version and with a minimal base  
Robust with smooth movement  
Durable over time

# CENTURY



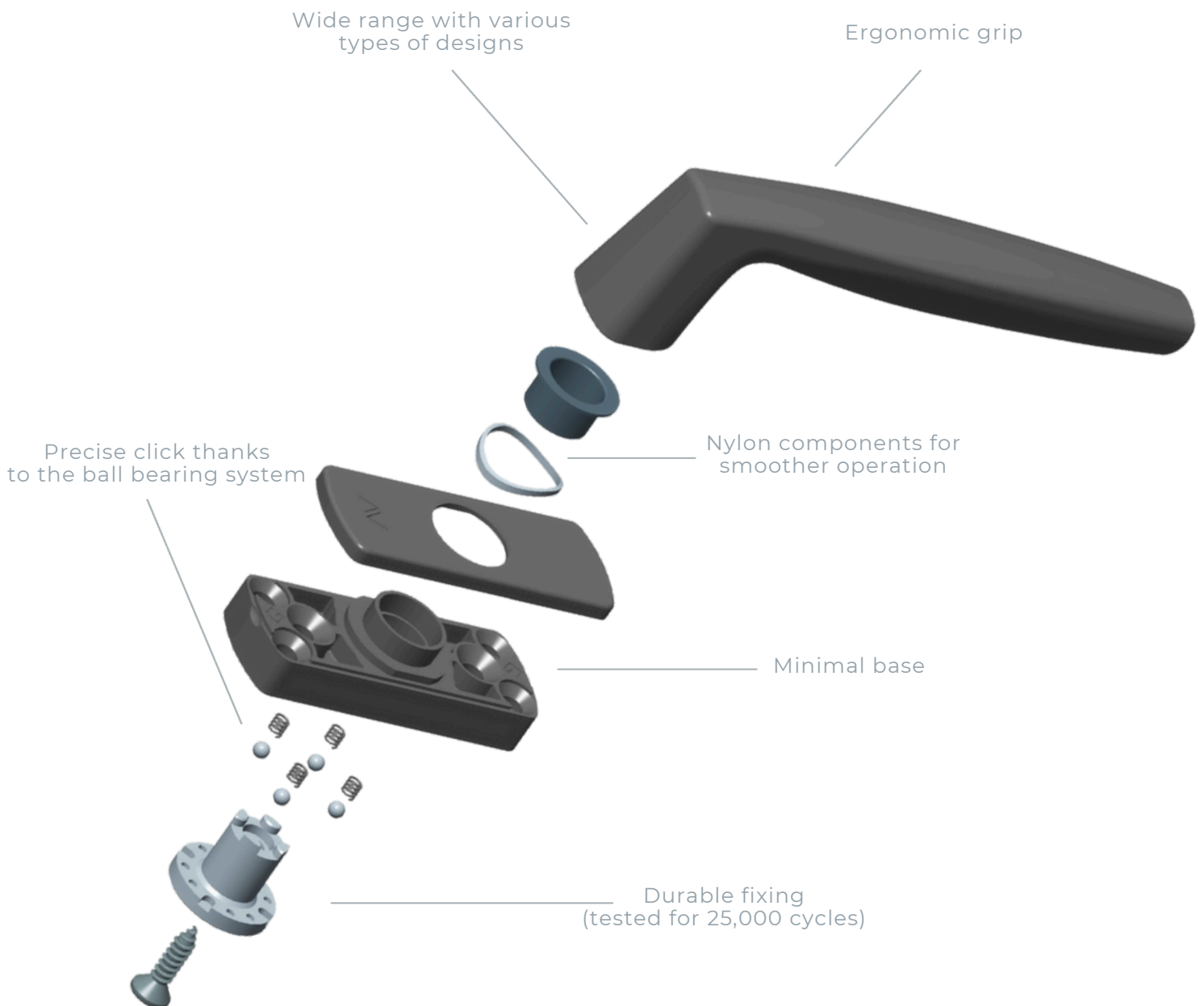
# FUNCTIONALITY TRADITION DESIGN

135 years of innovation bring the new CENTURY line by Savio Group to life, where tradition is renewed with two main models. **THE TRADITIONAL**, available in various styles, combines functionality and elegance in a minimalist design for those who appreciate the charm of the classic form with a base. **THE CONTEMPORARY**, with its sleek, base-less design, offers a refined solution that merges aesthetics with modern design.

The new CENTURY line is available in multiple finishes to suit any environment.

Each door and window handle in the new collection is the result of Savio's commitment to meeting the trends and demands of an ever-evolving global market.

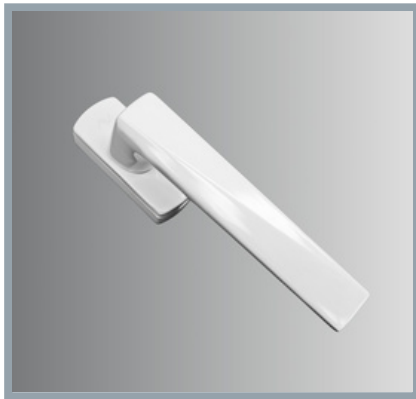
Designed to last, they adapt to any residential or commercial setting.



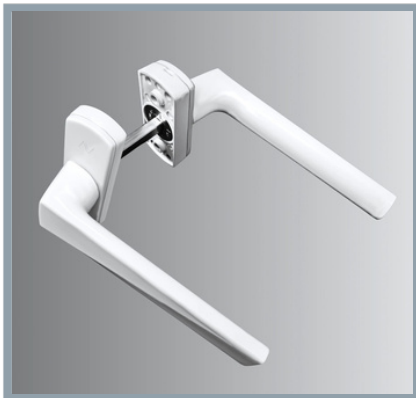
Range of window and door handles



| Article | Description  | Pcs. | Finishes                  |
|---------|--|------|---------------------------|
| 1615    | CENTURY metal die-cast handle, without base, center distance 20 mm, square spindle 7 mm with a projection of 27 mm, 2 TSEI 4X32 mm screws in galvanized steel. | 5    | 1013, B.SA, BL10, SILV, C |



| Article | Description   | Pcs. | Finishes                  |
|---------|---|------|---------------------------|
| 1615.2  | CENTURY metal die-cast handle, with base, center distance 43 mm, square spindle 7 mm with a projection of 40 mm, 2 TS-TGX 5X50 mm screws in galvanized steel. | 5    | 1013, B.SA, BL10, SILV, C |

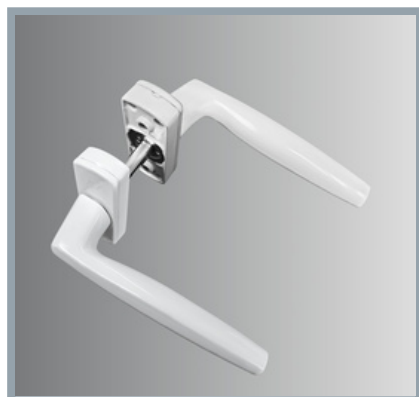


| Article | Description   | Pcs. | Finishes                  |
|---------|---|------|---------------------------|
| 1615.32 | CENTURY double ambidextrous handle with pre-assembled spring in metal die-cast, square spindle 8x140 mm, 4 TC 4.8X19 mm screws in galvanized steel. | 10   | 1013, B.SA, BL10, SILV, C |

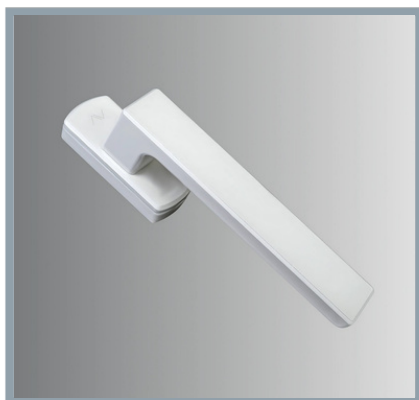


| Article | Description   | Pcs. | Finishes                  |
|---------|---|------|---------------------------|
| 1615.3  | CENTURY metal die-cast handle, with base, center distance 43 mm, square spindle 7 mm with a projection of 40 mm, 2 TS-TGX 5X50 mm screws in galvanized steel. | 5    | 1013, B.SA, BL10, SILV, C |

## Range of window and door handles



| Article | Description   | Pcs. | Finishes                  |
|---------|---|------|---------------------------|
| 1615.33 | CENTURY double ambidextrous handle with pre-assembled spring in metal die-cast, square spindle 8x140 mm, 4 TC 4.8X19 mm screws in galvanized steel. | 10   | 1013, B.SA, BL10, SILV, C |

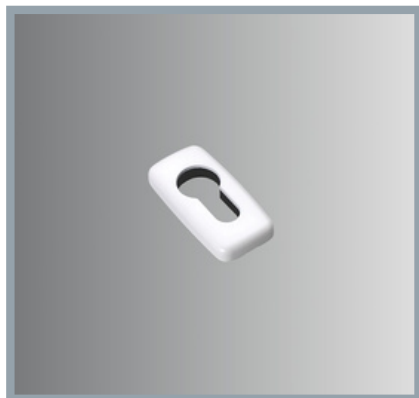


| Article | Description   | Pcs. | Finishes                     |
|---------|---|------|------------------------------|
| 1615.4  | CENTURY aluminum handle, with base, center distance 43 mm, square spindle 7 mm with a projection of 40 mm, 2 TS-TGX 5X50 mm screws in galvanized steel. | 5    | 1013, B.SA, BL10, SILV, C, F |



| Article | Description   | Pcs. | Finishes                  |
|---------|---|------|---------------------------|
| 1615.34 | CENTURY double ambidextrous handle with pre-assembled spring in aluminum, square spindle 8x140 mm, 4 TC 4.8X19 mm screws in galvanized steel. | 10   | 1013, B.SA, BL10, SILV, C |

## Accessories for handles



| Article | Description  | Pcs. | Finishes                  |
|---------|--|------|---------------------------|
| 874.804 | Die-cast metal escutcheon for shaped cylinder, 2 TC screws Ø 3.5x13 in galvanized steel. | 20   | 1013, B.SA, BL10, SILV, C |

## Range of mono and bi-directional mechanisms



| Article  | Description   | Pcs. | Finishes |
|----------|---|------|----------|
| 1200.1/7 | MONO Unidirectional movement with an 8 mm backset for tilt and turn door/windows, made of black zinc-coated zamak, square hole of 7 mm, with nylon bushings Ø 6 - Ø 8 mm. | 5    |          |



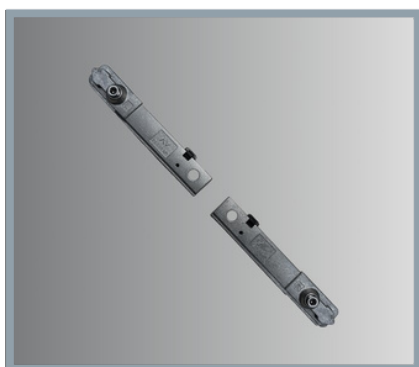
| Article  | Description   | Pcs. | Finishes |
|----------|---|------|----------|
| 1200.810 | Steel adapter for handles without base (to be used with items 1200/1201). | 5    |          |



| Article | Description   | Pcs. | Finishes |
|---------|---|------|----------|
| 1215/7  | MONO Unidirectional movement with an 8 mm backset for tilt and turn door/windows, made of steel, square hole of 7 mm, with nylon bushings Ø 6 - Ø 8 mm. | 5    |          |



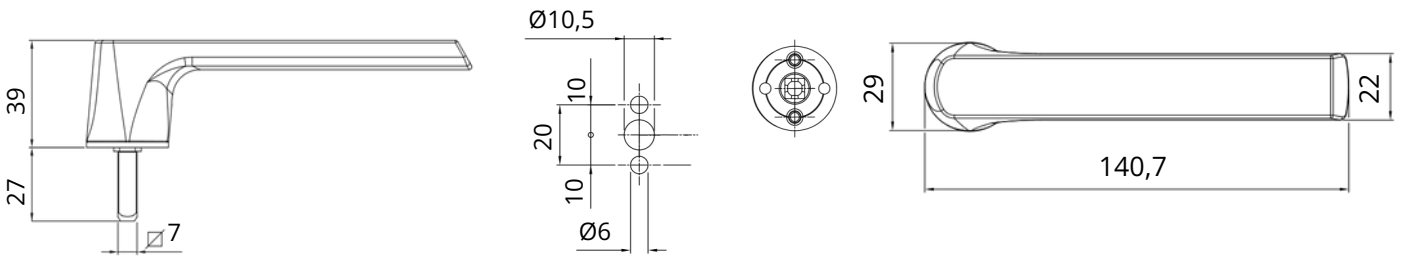
| Article | Description   | Pcs. | Finishes |
|---------|---|------|----------|
| 1216/7  | DUO Bidirectional movement with a 12 mm backset for tilt and turn door/windows, made of steel, square hole of 7 mm, with nylon bushings Ø 6 - Ø 8 mm. | 5    |          |



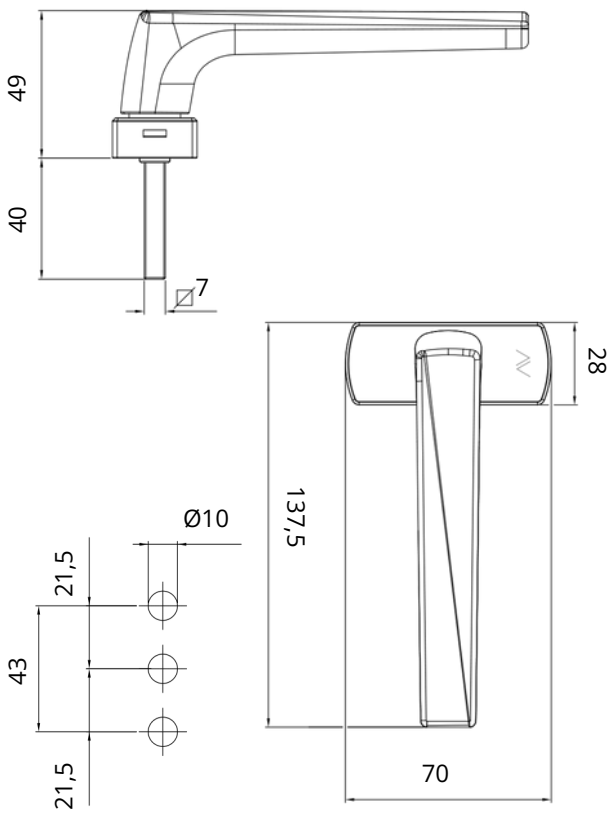
| Article  | Description  | Pcs. | Finishes |
|----------|--|------|----------|
| 3200.699 | Connecting plugs in white zinc-coated zamak (to be used with items 1215/1216 in the RIBANTA5 - INCANTO5 system). | 5    |          |

Range of window and door handles

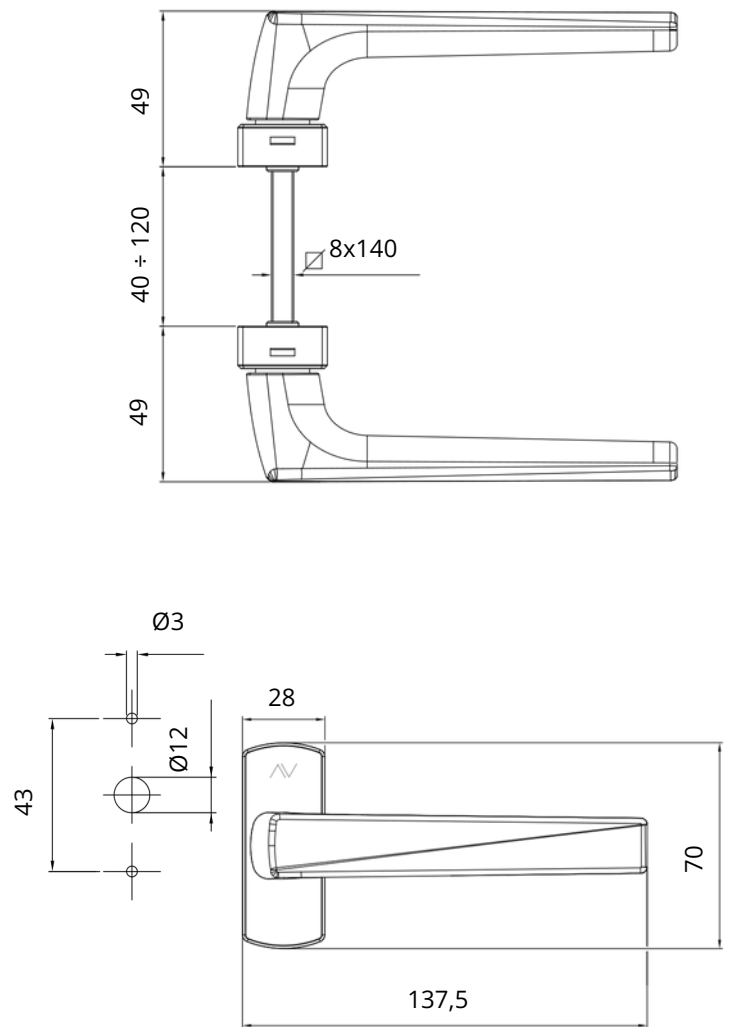
1615



1615.2



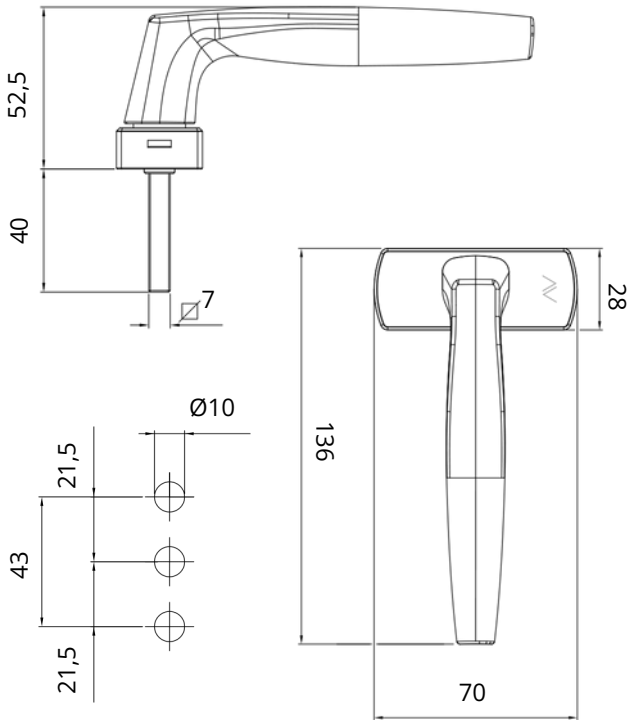
1615.32



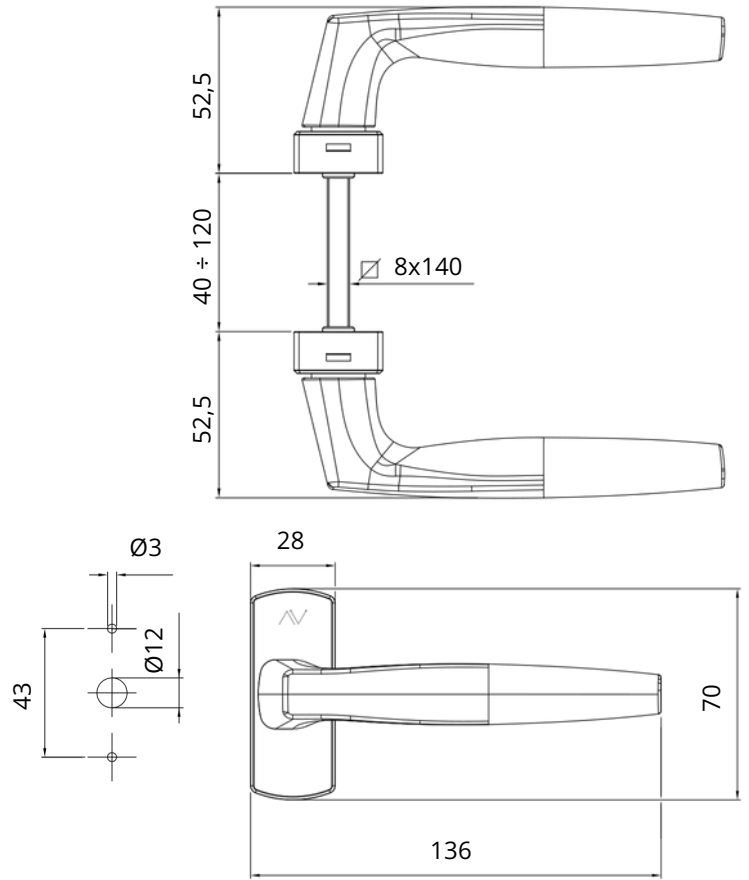


Range of window and door handles

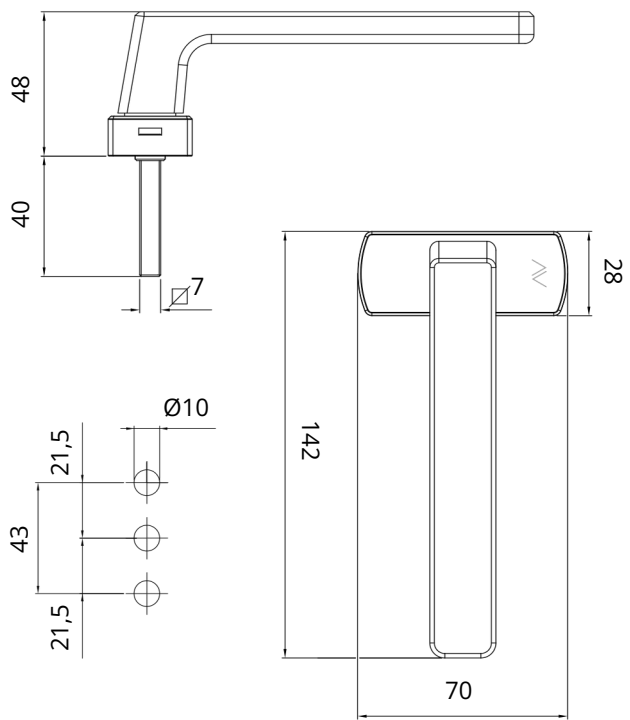
1615.3



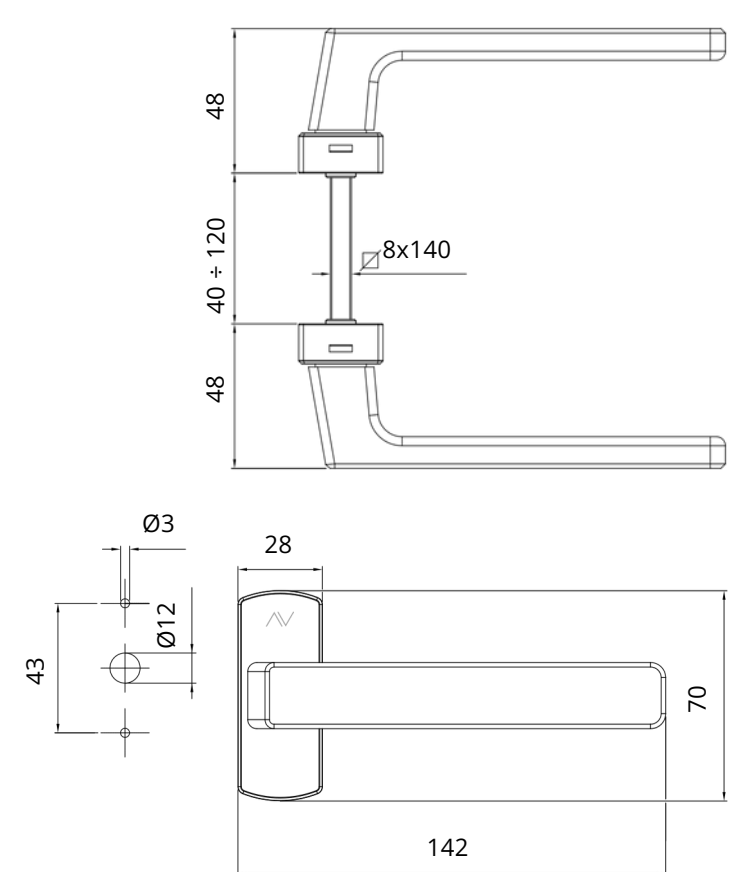
1615.33



1615.4

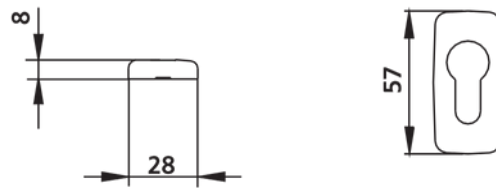


1615.34



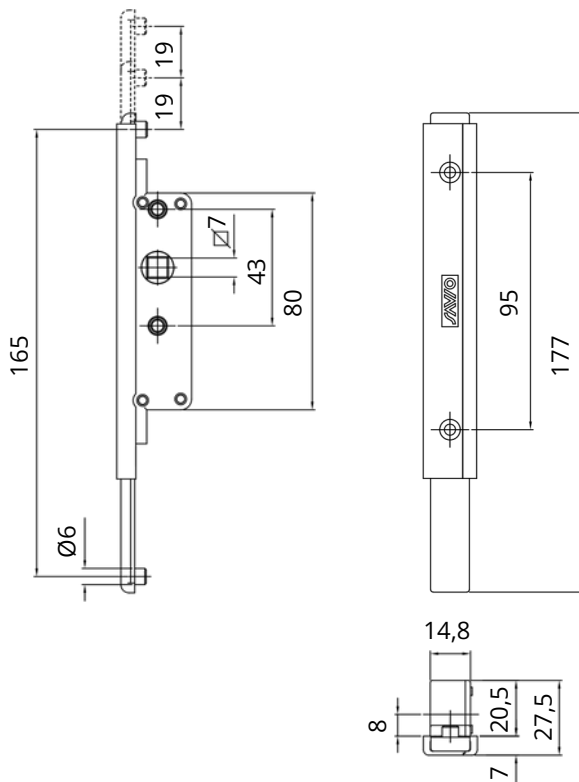
## Accessories for handles

874.804

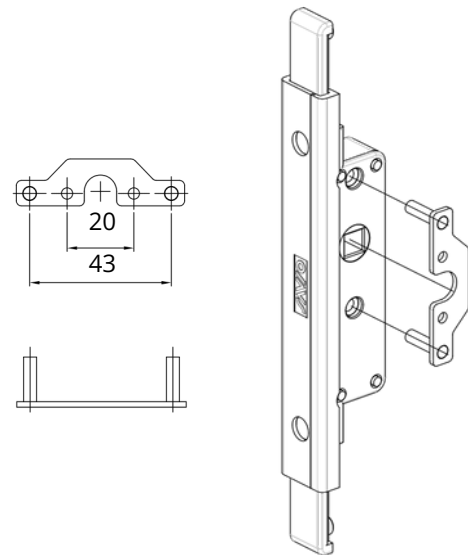


## Range of mono and bi-directional mechanisms

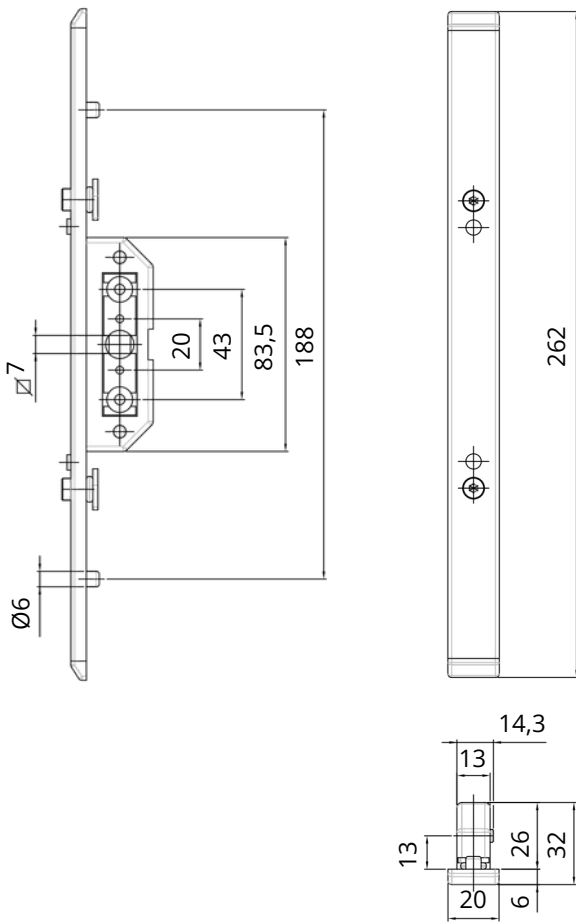
1200.177



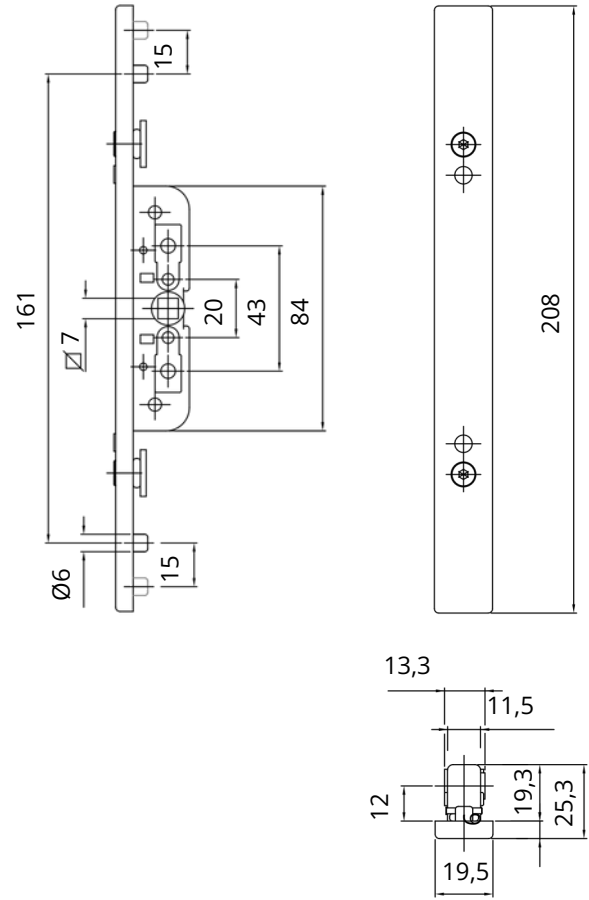
1200.810



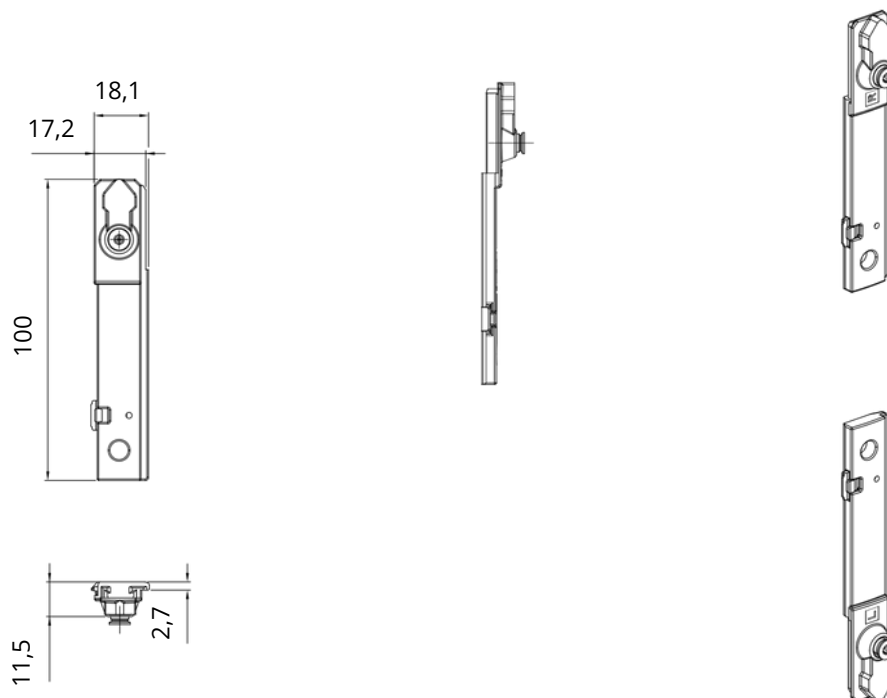
1215/7



1216/7



3200.699





Savio S.p.A.

Via Torino, 25 (s.s. 25) - 10050 Chiusa S. Michele (TO)

tel. +39 011 964 3464 - fax +39 011 964 3474

[www.savio.it](http://www.savio.it) - [info@savio.it](mailto:info@savio.it)