

MORSA+ MORSAADUE+



QUICK CLAMPING HINGES
WITH PREASSEMBLED COUNTERPLATES

Sturdy
Quick to install
Strong

AV SAVIO

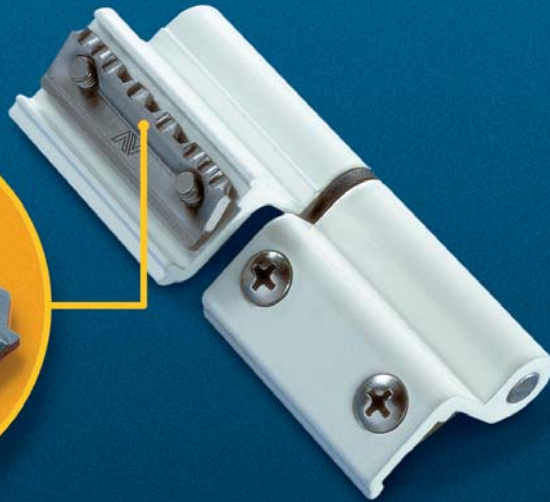


GB 03/2004



MORSA+ /MORSADUE+

Detail of the renewed counterplate with the new indented counterplate (patented).



To keep imitations back...
MORSA PULLS OUT ITS TEETH!

Thanks to its exclusive anchoring indentation, no other hinge can guarantee the same sliding tightness !

► **ONCE THERE WAS MORSA...**

12 years ago Savio patented MORSA revolutionizing the shape and the technical features of the hinge for windows and doors creating a new quality standard for the entire sector .

► **MORSA+ and MORSADUE+, THE NEW REVOLUTION**

MORSA+ and MORSADUE+ counterplate has been improved with a patented anchoring indentation to guarantee an incomparable fixing.

MORSA+ and MORSADUE+: SAVIO innovation for window hinges

NEW FASTENING SYSTEM

Counterplate indentation in relief anchors to the internal surface of the profile avoiding the vertical sliding of the hinge.

WIDE RANGE

The wide range permits the application of the hinge on all main profiles and for all the typologies of windows.

CARRYING CAPACITY

The strength of the hinge permits to reach a high carrying capacities starting from 80 Kg with 2-wing hinges (MORSA+) until 100 Kg with 3-wing hinges

MATERIALS

The use of the new counterplate joined to stainless steel screws and pin allows the application of the hinge also in corrosive environments such as marine and industrial areas etc.

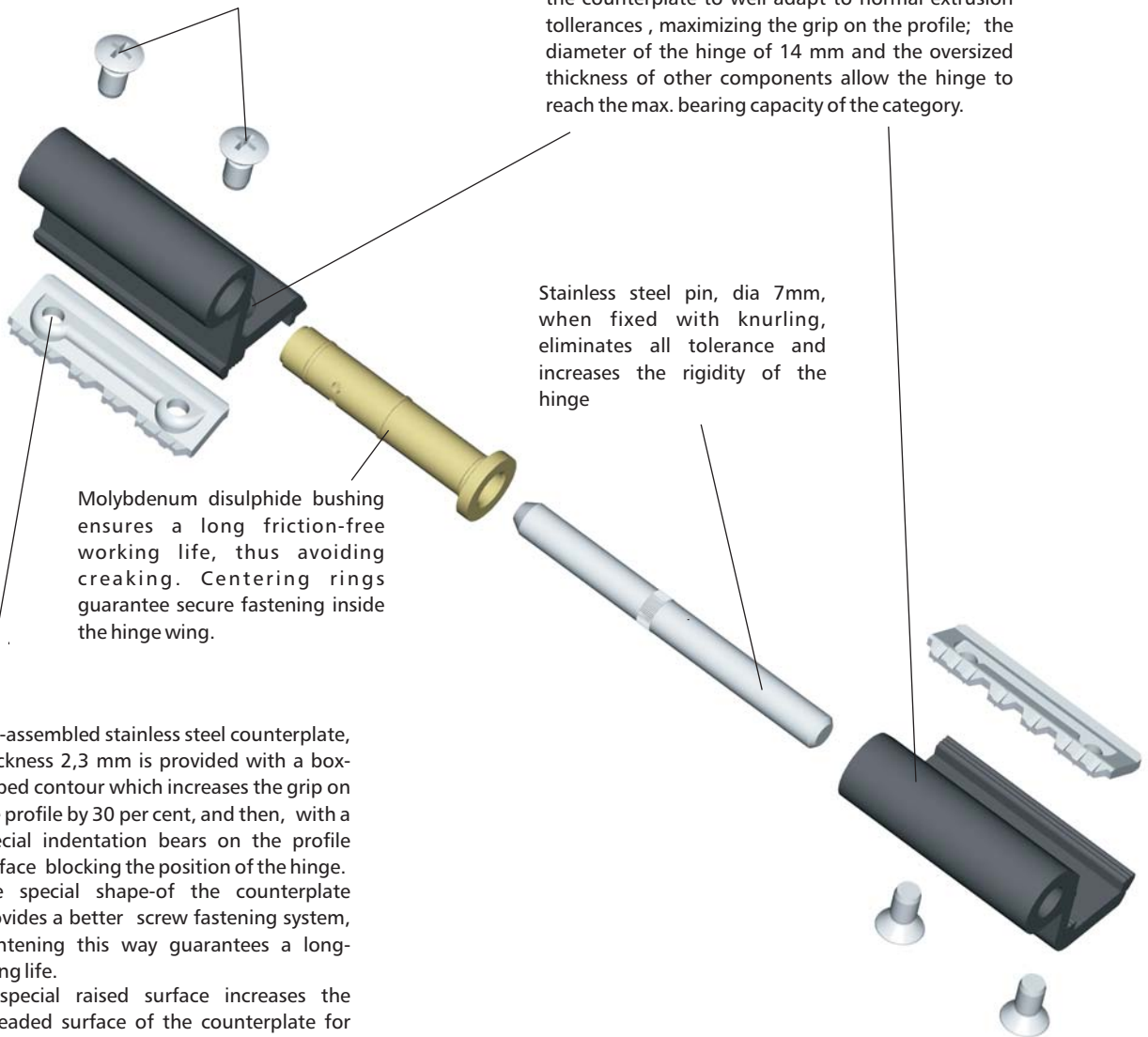
The molybdenum disulphide bushing ensures a long friction-free working life, thus avoiding creaking.

MORSA+ MORSADUE+

MORSA+: quick clamping hinge for windows and doors

Deeper screwdriver slot to allow tightening with electric or pneumatic screwdrivers. Countersunk shape of the head increases the surface of contact on the hinge.

The slotted mounting holes allow self-adjustment of the counterplate to well adapt to normal extrusion tolerances, maximizing the grip on the profile; the diameter of the hinge of 14 mm and the oversized thickness of other components allow the hinge to reach the max. bearing capacity of the category.



Molybdenum disulphide bushing ensures a long friction-free working life, thus avoiding creaking. Centering rings guarantee secure fastening inside the hinge wing.

Stainless steel pin, dia 7mm, when fixed with knurling, eliminates all tolerance and increases the rigidity of the hinge

Pre-assembled stainless steel counterplate, thickness 2,3 mm is provided with a box-ribbed contour which increases the grip on the profile by 30 per cent, and then, with a special indentation bears on the profile surface blocking the position of the hinge. The special shape of the counterplate provides a better screw fastening system, tightening this way guarantees a long-fixing life. A special raised surface increases the threaded surface of the counterplate for better tightening.

Window hinge



Art.	Description	Pcs.	Finishes
1121 1121.1	(patented) Two-wing aluminium hinge, nylon bushing, pin, counterplates and 4 preassembled raised countersunk head screws M5x10 in stainless steel 430.	50	C, F, U, NE, BL10, ZE, HL, 1013, 1015, 6002, 6005, 8017, 8019, 9001, 9005, 9010, B.SA, 9016, BR801, BW21, GR217, GR606, RD501, WT005
		20	PVD H, PVD X, XSD
1121.2/.3/.4/.5/.7 1121.10/.13	Renewed version with new indented counterplate. Carrying capacity: 2 hinges 80 Kg, 3 hinges 90 Kg.	50	C, F, U, NE, BL10, ZE, HL, 1013, 6005, 8017, 8019, 9001, 9005, 9010, BR801, GR217, GR606, RD501, WT005
1121.6/.9		50	C, F, U, NE, BL10, ZE, HL, 1013, 6005, 8017, 8019, 9001, 9005, 9010, BR801, BW21, GR217, GR606, RD501, WT005
1121.11		50	C, F, U, NE, BL10, ZE, HL, 1013, 6005, 8017, 8019, 9001, 9005, 9010, BR801, BW21, GR217, GR606, RD501, WT005
		20	PVD H, PVD X, XSD
1121.12		50	C, F, U, NE, BL10, ZE, HL, 1013, 6005, 8017, 8019, 9001, 9005, 9010, BR801, GR217, GR606, RD501, WT005
		20	XSD
1121.78		50	C, F, U, NE, BL10, ZE, HL, 1013, 6005, 8017, 9005, 9010
1121.79		50	C, F, U, NE, BL10, ZE, HL, 1013, 6005, 8017, 8019, 9001, 9005, 9010, BR801, GR217, GR606, RD501, WT005
1121/.1/.11 D	Like 1121/.1/.11 but preassembled right .	50	F, NE, BL10, ZE, 1013, 9005, 9010
1121/.1/.11 S	Like 1121/.1/.11 but preassembled left .	50	



Art.	Description	Pcs.	Finishes
1121.951	Pin assembling tool for art. 1121-1123, in galvanized steel	4	



Art.	Description	Pcs.	Finishes
1121.952	Bushing assembling tool for art. 1115-1116-1121-1123, in galvanized steel	4	

Windows hinge



Art.	Description	Pcs.	Finishes
1122/.1	(patented) Three-wing preassembled aluminium hinge, nylon bushings, pins, preassembled counterplates and 6 raised countersunk head screws M5x10 in stainless steel 430	20	C, F, U, NE, BL10, ZE, HL, 1013, 6002, 6005, 8017, 8019, 9001, 9005, 9010, 9016, BR801, BW21, GR217, GR606, RD501, WT005
1122.2/.3/.4/.5/.6/.7/.9 1122.10/.12/.13	Renewed version with new indented counterplate.	20	C, F, U, NE, BL10, ZE, HL, 1013, 6005, 8017, 8019, 9001, 9005, 9010, BR801, GR217, GR606, RD501, WT005
1122.11	Carrying capacity: 2 hinges 90 Kg, 3 hinges 100 Kg.	20	C, F, U, NE, BL10, ZE, HL, 1013, 6005, 7032, 8017, 8019, 9001, 9005, 9010, BR801, BW21, GR217, GR606, RD501, WT005



Art.	Description	Pcs.	Finishes
1122.200/.211	(patented) 3-wing preassembled hinge in aluminium, nylon bushings, preassembled extractable pin , preassembled counterplates and 6 countersunk head screws M5x9 in stainless steel 430.	20	C, F, U, NE, BL10, ZE, HL, 1013, 6005, 8017, 8019, 9001, 9005, 9010, 9016, BR801, GR217, GR606, RD501, WT005
		10	PVD H, PVD X, XSD
1122.201	Carrying capacity: 2 hinges 90 Kg., 3 hinges Kg. 100	20	C, F, U, NE, BL10, ZE, HL, 1013, 1015, 6005, 8017, 8019, 9001, 9005, 9010, 9016, BR801, GR217, GR606, RD501, WT005
		10	PVD H, PVD X, XSD



Art.	Description	Pcs.	Finishes
1123	(patented) Two-wing aluminium hinge for third casement, nylon bushing, pin, preassembled counterplates and 4 raised countersunk head screws M5x10 in stainless steel.	50	C, F, U, NE, BL10, ZE, HL, 1013, 6005, 7032, 8017, 8019, 9001, 9005, 9010, 9016, BR801, BW21, GR217, GR606, RD501, WT005
		20	PVD H, PVD X, XSD
1123.3/.5/.6/.7 1123.10/.13	Renewed version with new indented counterplate.	50	C, F, U, NE, BL10, ZE, HL, 1013, 6005, 8017, 8019, 9001, 9005, 9010, BR801, GR217, GR606, RD501, WT005
1123.9	Carrying capacity: 2 hinges 80 Kg, 3 hinges 90 Kg	50	C, F, U, NE, BL10, ZE, HL, 1013, 6005, 8017, 8019, 9001, 9005, 9010, BR801, BW21, GR217, GR606, RD501, WT005
1123.11		50	C, F, U, NE, BL10, ZE, HL, 1013, 6005, 7032, 8017, 8019, 9001, 9005, 9010, BR801, BW21, GR217, GR606, RD501, WT005
		20	PVD H, PVD X, XSD

Windows hinge



Art.	Description	Pcs.	Finishes
1115	(patented) Two-wing hinge in aluminium, 2 nylon bushings, galvanized steel pin, preassembled counterplates and 4 raised countersunk head screws M5x10 in stainless steel 430	50	C, F, U, NE, BL10, ZE, HL, 1013, 1015, 6005, 8017, 8019, 9001, 9005, 9010, 9016, BR801, GR217, GR606, RD501, WT005
1115.1	Carrying capacity: 2 hinges Kg 60, 3 hinges Kg 70.	50	C, F, U, NE, BL10, ZE, HL, 1013, 6005, 8017, 8019, 9001, 9005, 9010, 9016, BR801, GR217, GR606, RD501, WT005
1115.3/.9/.11/.13/.14 1115.15/.71/.73/.115	Renewed version with oversized diameter (excepted 1115.3/.9) and new indented counterplate.	50	C, F, U, NE, BL10, ZE, HL, 1013, 6005, 8017, 8019, 9001, 9005, 9010, BR801, GR217, GR606, RD501, WT005
1115.12		50	C, F, U, NE, BL10, ZE, HL, 1013, 6005, 8017, 8019, 9001, 9005, 9010, BR801, GR217, GR50, GR606, RD501, WT005
1115.74/.75/.81 1115./83/.95	Like 1115 but with stainless steel pin.	50	C, F, U, NE, BL10, ZE, HL, 1013, 6005, 8017, 8019, 9001, 9005, 9010, BR801, GR217, GR606, RD501, WT005

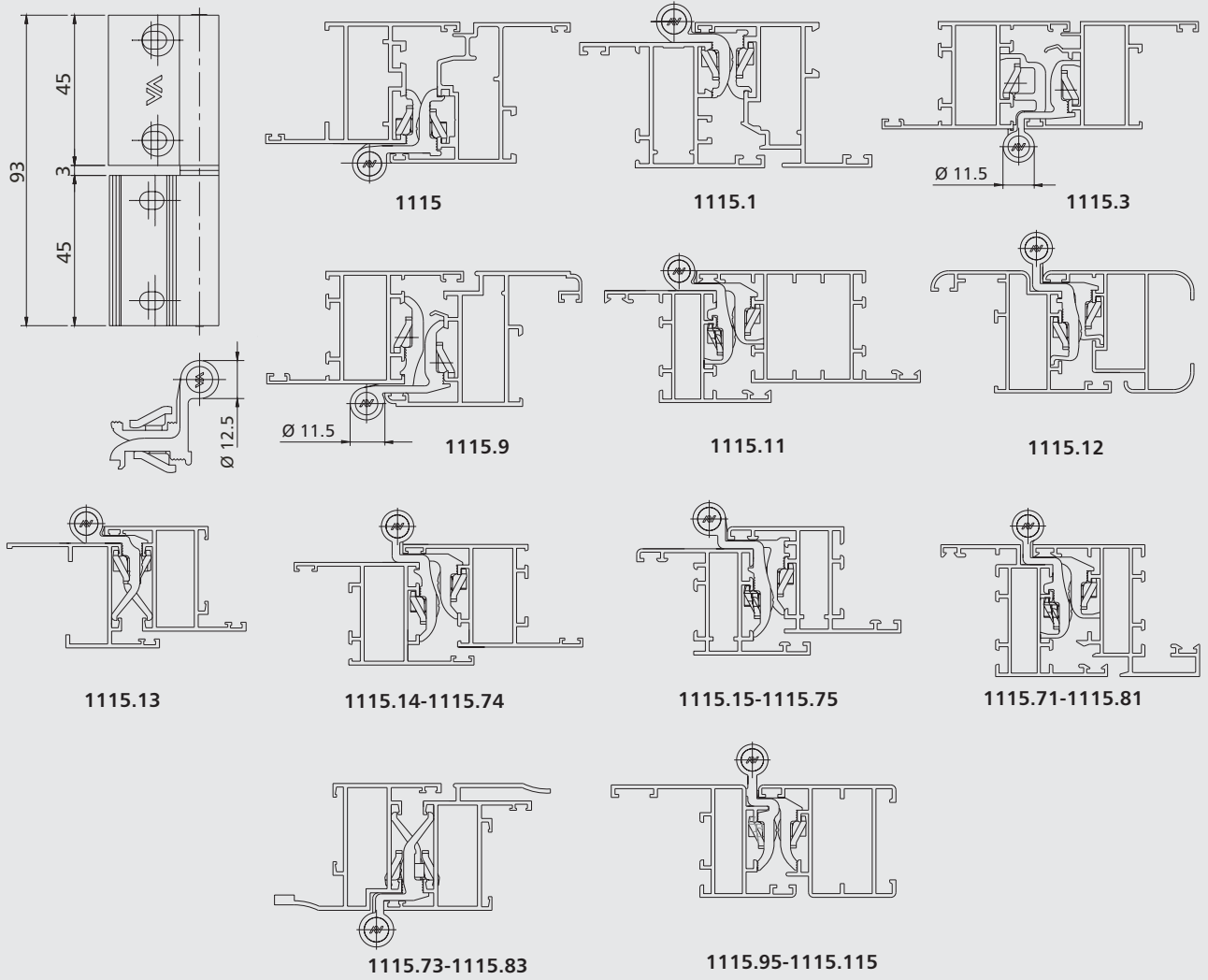


Art.	Description	Pcs.	Finishes
1116.1	(patented) Two-wing hinge in aluminium for third casement, 2 nylon bushings, galvanized steel pin, preassembled counterplates and 4 raised countersunk head screws M5x10 in stainless steel 430.	50	C, F, U, NE, BL10, ZE, HL, 1013, 1015, 6005, 8017, 8019, 9001, 9005, 9010, 9016, BR801, GR217, GR606, RD501, WT005
1116.3/.9/.11/.13/.15	Carrying capacity: 2 hinges Kg 60, 3 hinges Kg 70. Renewed version with oversized diameter (excepted 1116.3/.9) and new indented counterplate.	50	C, F, U, NE, BL10, ZE, HL, 1013, 6005, 8017, 8019, 9001, 9005, 9010, BR801, GR217, GR606, RD501, WT005
1116.75	Like 1116.1 but with stainless steel pin.	50	C, F, U, NE, BL10, ZE, HL, 1013, 6005, 8017, 8019, 9001, 9005, 9010, BR801, GR217, GR606, RD501, WT005

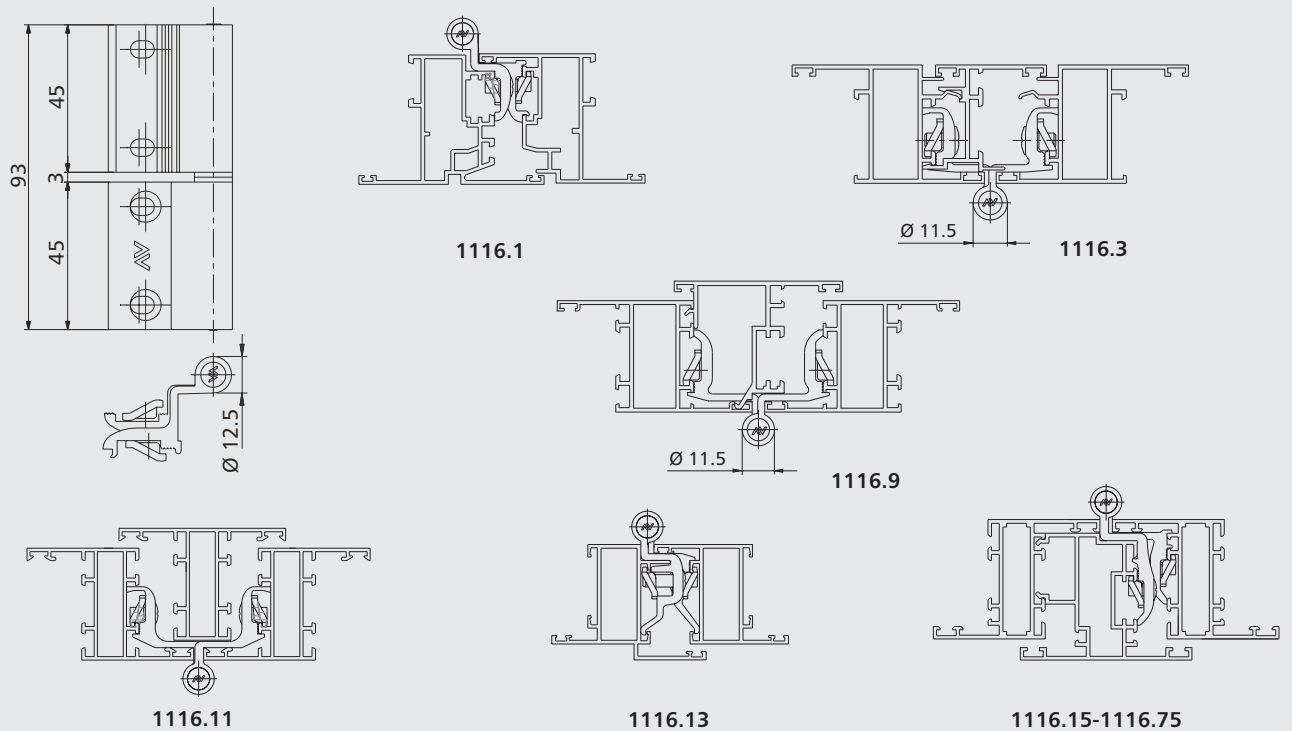
Finishing table

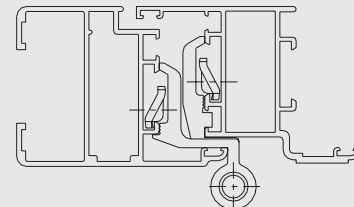
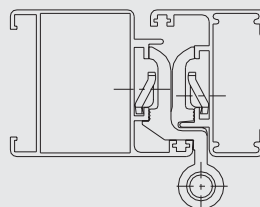
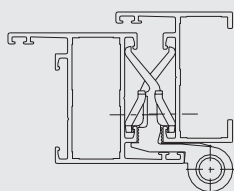
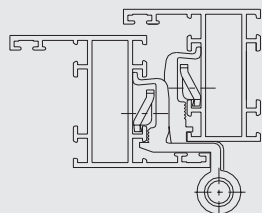
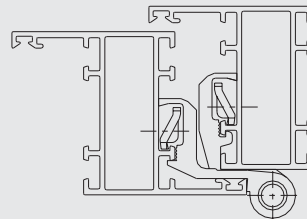
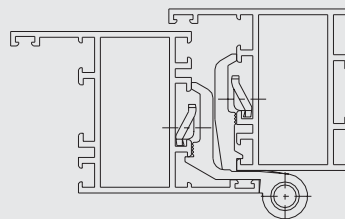
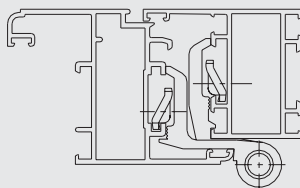
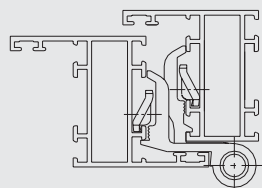
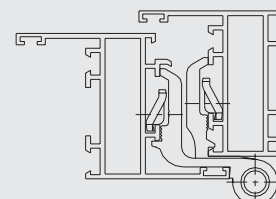
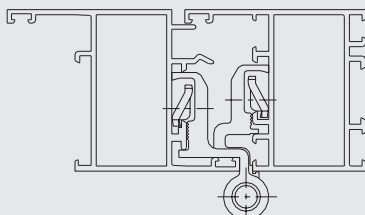
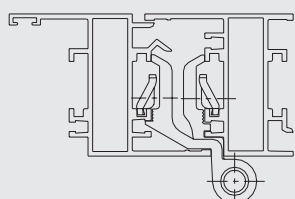
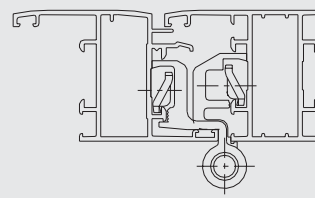
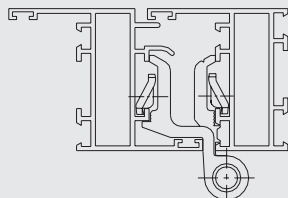
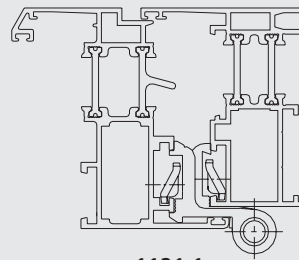
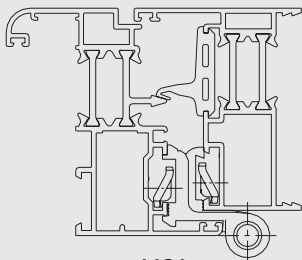
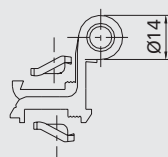
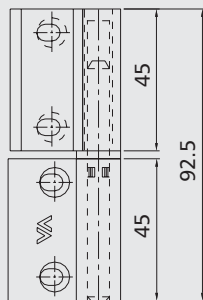
1013 = ivory RAL powder coated	9016 = traffic white RAL powder coated	BW21 = ice white powder coated
1015 = dark ivory RAL powder coated	BL10 = matte black powder coated	GALET 9660 = grey powder coated
6002 = leaf green RAL powder coated	B.SA = satin-finished white RAL powder coated	GR50 = green textured
6005 = moss green RAL powder coated	C = mill finished	GR217 = marbled dark grey
7032 = pebble grey RAL powder coated	HL= bright gold	GR606 = marbled green
8017 = brown RAL powder coated	F = anodized silver	RD501 = marbled red
8019 = coffee RAL powder coated	U = anodized light bronze	WT005 = gothic white
9001 = cream RAL powder coated	NE = electrolytically anodized black colour	PVD H = bright gold PVD treated
9005 = black RAL powder coated	ZE = electrolytically anodized coffee colour	PVD X = satin steel PVD treated
9010 = white RAL powder coated	BR801 = marbled brown	XSD = satin steel

Range of hinges series 1115

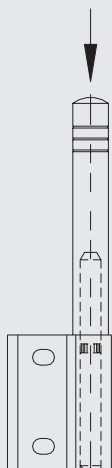


Range of hinges series 1116

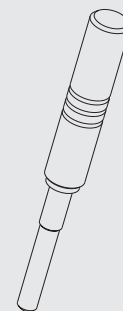
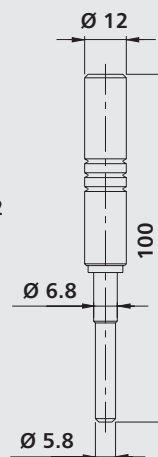


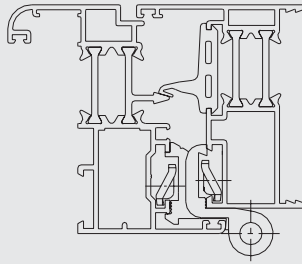
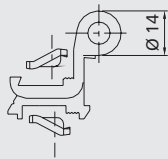
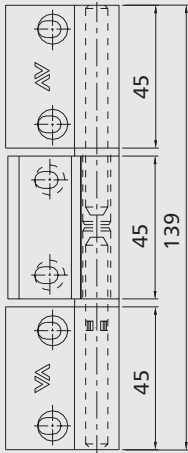


1121.951

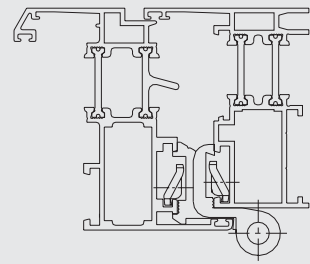


1121.952

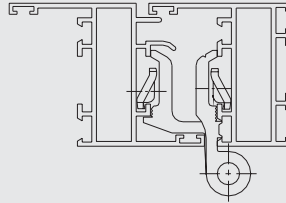




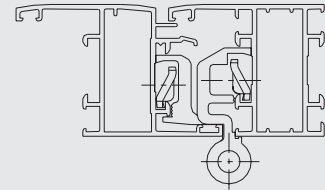
1122



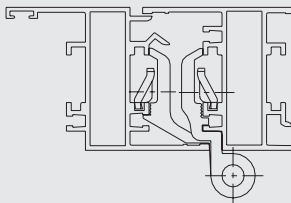
1122.1



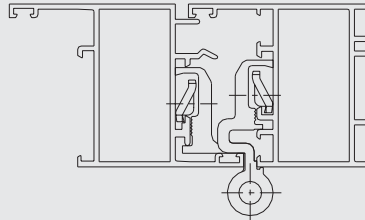
1122.2



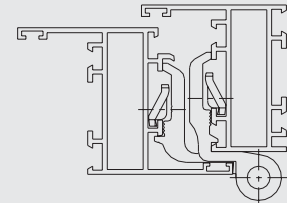
1122.3



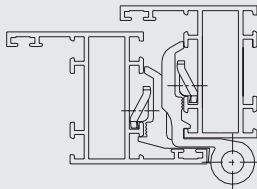
1122.4



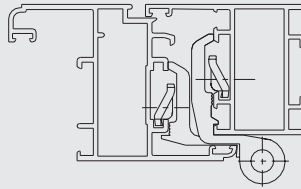
1122.5



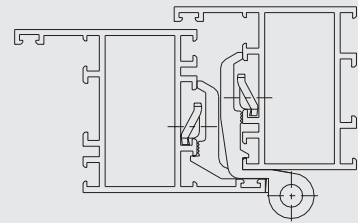
1122.6



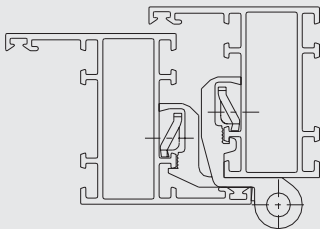
1122.7



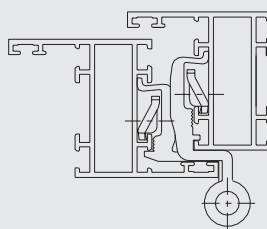
1122.9



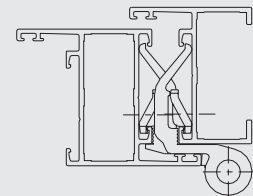
1122.10



1122.11

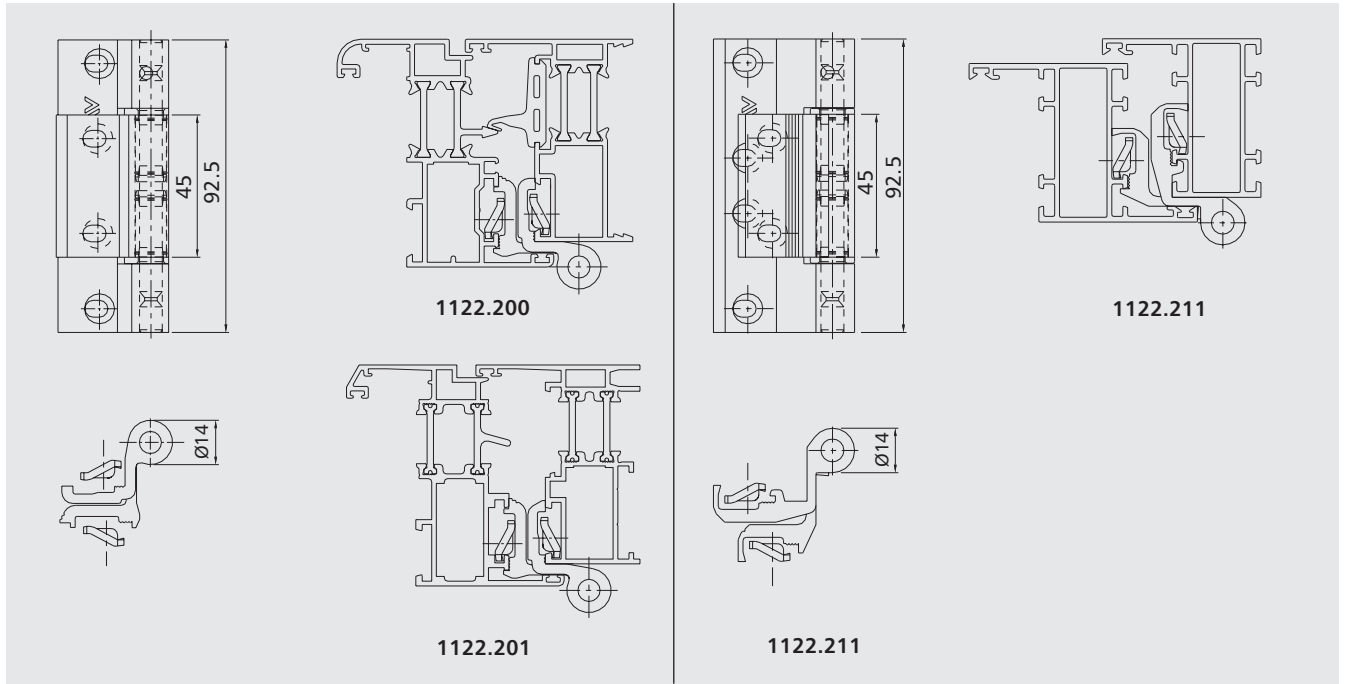


1122.12

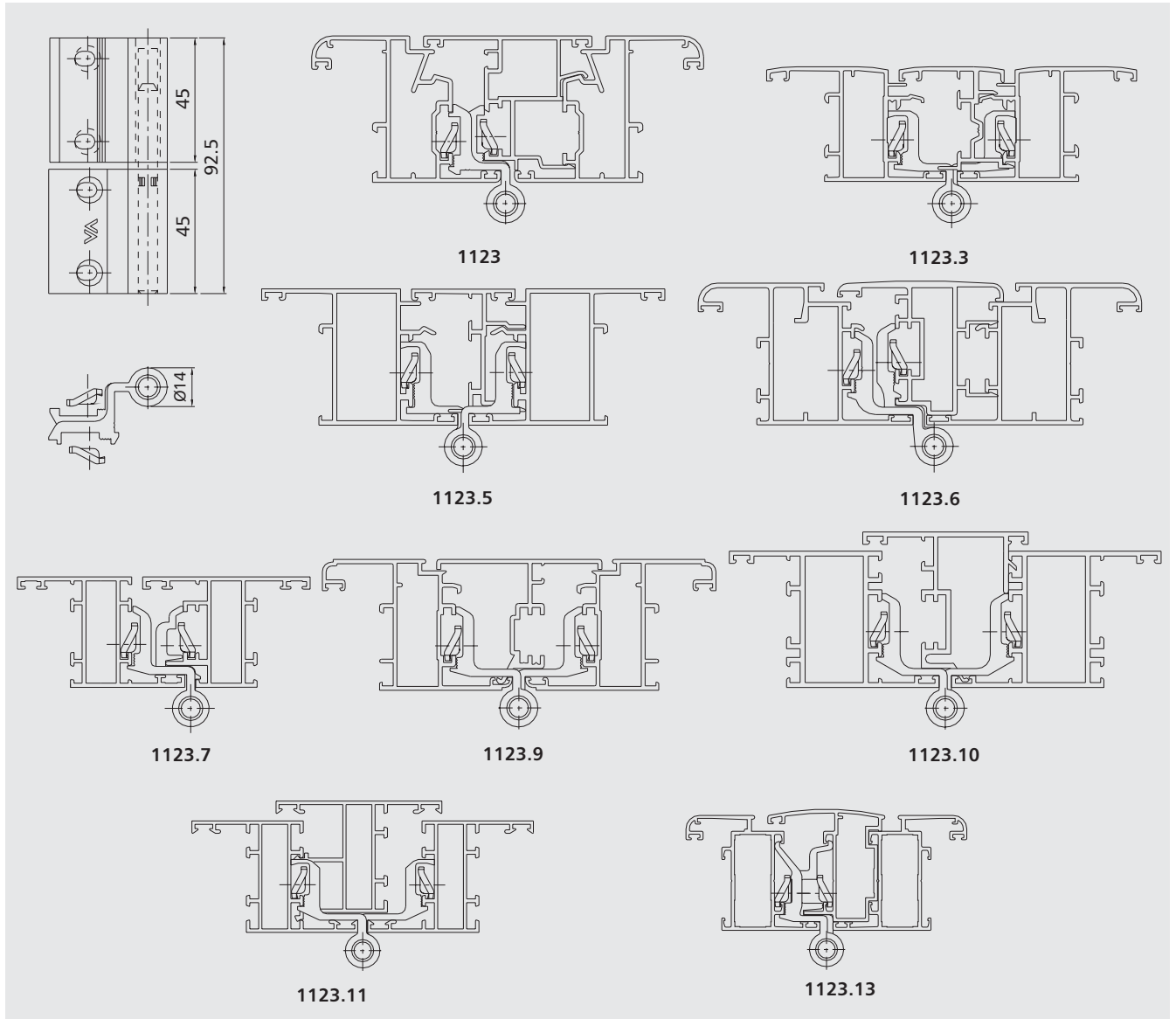


1122.13

Range of 3-wing hinges



Range of hinges series 1123



Suitability table for italian profiles

EXTRUDER	PROFILE	1115-1121-1122-1122.200	1115 .1-1121.1-1122.1-1122.201	1115 .3-1116.3-1121.3-1122.3-1123.3	1115 .9-1116.9-1121.9-1122.9-1123.9	1115 .11-1121.11-1122.11-1122.211	1115 .12-1121.12-1122.12	1115 .13-1116.13	1115 .14-1115.74	1115 .15-1115.75-1116.15-1116.75	1115 .71-1115.81	1115 .73-1115.83	1115.95-1115 .115	1116.1	1116.11 -1123.11	1121.2-1122.2	1121.4-1122.4	1121.5-1122.5-1123.5	1121.6-1122.6-1123.6	1121.7-1122.7	1121.10-1122.10-1123.10	1121.13-1122.13-1123.13	1121.78	1121.79	1123	1123.7	
AL SYSTEM	GLOBAL 41									•																	
	GLOBAL 45													•													
	GLOBAL 48									•																	
	GLOBAL 70 TT									•																	
ALCAN	EURO KEEPER 46/53	•																								•	
	GREEN 45 sorm.	•																								•	•
	GREEN 45/52 SP.	•																								•	•
	GREEN ragg.																									•	•
	KEEPER 53/60	•																								•	•
	KEEPER 53/60 ragg.																									•	•
	KEEPER 61/68	•																								•	•
	POINT ragg.						•																			•	•
	POINT sorm.						•														•						•
CRISTAL Porte	•														•										•	•	
ALCOA	R 40					•										•											
	R 40 ragg.										•																
	R 40 revamping					•																					
	R 62 TT					•										•											
	R 72 TT					•										•											
	R 50					•										•											
	R 50 TT					•										•											
	R 50 TT barra cont.					•										•											
	R 60 TT					•										•											
ALEXIA	ESEDRA GA 53	•													•											•	•
	ESEDRA GA 53 ragg.														•											•	•
	ESEDRA TT 63	•													•											•	•
	ESEDRA TT 75	•													•											•	•
ALL.CO	ALL.CO 5 compl.															•											
	ALL.CO 5 sorm.																			•							
	ALL.CO 5 TT compl.															•											
	ALL.CO 5 TT sorm.																			•							
	ALL.CO P 4 compl.															•											
	ALL.CO P 4 sorm.									•																	
	ALL.CO P 4 sorm.ragg.								•																		
	EXPORT 40	•													•											•	•
	EXPORT 45	•													•											•	•
	EXPORT 45 Raggiato														•											•	•
	EXPORT 45 TT	•													•											•	•
	EXPORT 45 TT Ragg.														•											•	•
	EXPORT 50	•													•											•	•
	EXPORT 50 TT	•													•											•	•
	K 40	•													•											•	•
	K 40 Ragg.														•											•	•
	K 45T	•													•											•	•
K 64T	•													•											•	•	

EXTRUDER	PROFILE																										
		1115-1121-1122-1122.200	1115 .1-1121.1-1122.1-1122.201	1115 .3-1116.3-1121.3-1122.3-1123.3	1115 .9-1116.9-1121.9-1122.9-1123.9	1115 .11-1121.11-1122.11-1122.211	1115 .12-1121.12-1122.12	1115 .13-1116.13	1115 .14-1115.74	1115 .15-1115.75-1116.15-1116.75	1115 .71-1115.81	1115 .73-1115.83	1115.95-1115 .115	1116.1	1116.11 -1123.11	1121.2-1122.2	1121.4-1122.4	1121.5-1122.5-1123.5	1121.6-1122.6-1123.6	1121.7-1122.7	1121.10-1122.10-1123.10	1121.13-1122.13-1123.13	1121.78	1121.79	1123	1123.7	
ALL.CO	K 70T	•											•													•	
	NEW AGE																		•								
	SICURBLIND 65 sorm.	•											•													•	
ALUMEC	DS 45		•										•													•	
	SYNTESIS 45		•										•													•	
	SYNTESIS 57		•										•													•	
	SYNTESIS 60TT		•										•													•	
ALUSUISSE	ALSEC 2000/59		•										•													•	
	ALSEC 2000/69		•										•													•	
	AS 46		•										•													•	
BODEGA	BGA 50		•										•													•	
	BGA 50 Ragg.		•										•													•	
	BT 60 TT		•										•													•	
CLL	TECNO 50					•									•												
	TECNO PERS. TC 45					•									•												
DEMAL	PRESTIGE 46												•													•	
	PRESTIGE 48																	•									
EQUIPE	SERIE 8000		•										•													•	
	SERIE 8000 Ragg.												•													•	
	SERIE 8000 TT		•										•													•	
	SERIE 8000 TT Ragg.												•													•	
	SERIE 8000 Persiana												•													•	
ETA	E 410	•											•													•	
	E 510	•											•													•	
	E 470 TT	•											•													•	
	E 560 TT	•											•													•	
	E 640 TT	•											•													•	
FINAL	EXPORT 45	•											•													•	
	EXPORT 45 Raggiato												•													•	
	EXPORT 45 T	•											•													•	
	EXPORT 45 T Ragg.												•													•	
	EXPORT 50	•											•													•	
	EXPORT 50 T	•											•													•	
HYDRO	BREAK PA 52		•										•													•	
	BREAK PA 52 Ragg.		•										•													•	
	BREAK PA 62		•										•													•	
	BREAK PA 63		•										•													•	
	BREAK PA 70		•										•													•	
	BREAK PA 70 S		•										•													•	
	DOMAL 40											•											•				
	DOMAL 40 ragg.											•														•	
	DOMAL GELOSIA		•										•													•	
	DOMAL SUNNY												•													•	
	FIORENTINA												•													•	
DOMAL TWIN		•										•													•		

EXTRUDER	PROFILE	1115-1121-1122-1122.200	1115 .1-1121.1-1122.1-1122.201	1115 .3-1116.3-1121.3-1122.3-1123.3	1115 .9-1116.9-1121.9-1122.9-1123.9	1115 .11-1121.11-1122.11-1122.211	1115 .12-1121.12-1122.12	1115 .13-1116.13	1115 .14-1115.74	1115 .15-1115.75-1116.15-1116.75	1115 .71-1115.81	1115 .73-1115.83	1115.95-1115 .115	1116.1	1116.11 -1123.11	1121.2-1122.2	1121.4-1122.4	1121.5-1122.5-1123.5	1121.6-1122.6-1123.6	1121.7-1122.7	1121.10-1122.10-1123.10	1121.13-1122.13-1123.13	1121.78	1121.79	1123	1123.7	
PASSERINI	EKIP 50 sorm.																				●						
	EKIP ev sorm.				●																			●			
	EKIP ev compl.			●																							
	EKIP THERMO 53			●																							
	VENICE TH16	●												●												●	
	MAASTRICHT LIGHT	●												●												●	
	MAASTRICHT 53	●												●												●	
	MAASTRICHT TH 60	●												●												●	
	MAASTRICHT TH 68	●												●												●	
PONZIO SUD	NEW TEC 50					●																					
	NEW TEC 52					●																					
	NEW TEC 60					●																					
	NEW TEC 68 ST					●																					
	WINDSTOP 45 by PONZIO	●												●												●	
	WINDSTOP 45 by PONZIO ragg.													●												●	
	WINDSTOP 45 TT by PONZIO	●												●												●	
	WINDSTOP 45 TT by PONZIO ragg.													●												●	
PROFILATI	EKU 40	●												●												●	
	EKU 53	●												●												●	
	EKU 53 ragg.													●												●	
	EKU 53 TT	●												●												●	
	EKU 64 TT	●												●												●	
	EKU 72 TT	●												●												●	
	EKU COMPACT													●												●	
	PE 40						●													●							●
	PE 40 ragg.						●													●							●
	PE 50						●													●							●
	PE 58 TT sorm.						●													●							●

N.B. : preassembled hinges RIGHT and LEFT, articles 1121 D, 1121.1 D, 1121.11 D, 1121 S, 1121.1 S and 1121.11 S follow the same suitability of hinges 1121, 1121.1 and 1121.11.

Savio S.p.A. reserves the right to modify the technical specifications of products featured in this catalogue at any moment and without warning.

Enter the world of SAVIO online:

www.savio.it

Look for the quality of SAVIO Restyling MANON by PININFARINA and the full range of SAVIO products on the group's site.

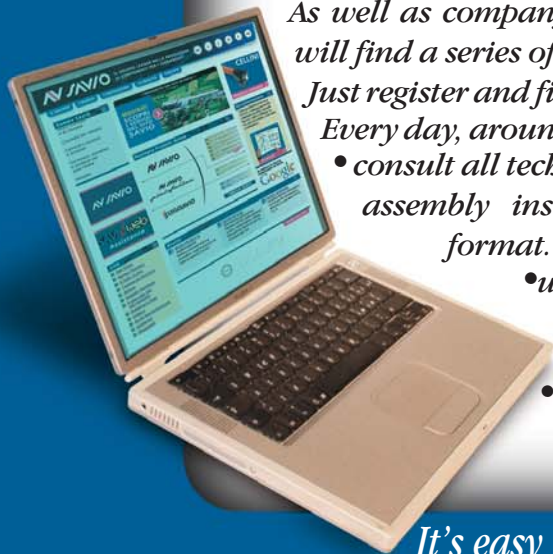
Discover the advantages offered by a company portal, constantly evolving to offer market operators new services .

As well as company information and the product news, you will find a series of free services aimed at the professional sector.

Just register and fill in the provided on line form .

Every day, around the clock, you will be able to :

- *consult all technical documentation (catalogues, brochures, assembly instructions, etc.) and download it in PDF format.*
- *use the "Savio Web Assistance" service*
- *be constantly updated on all new developments on the site via e-mail .*
- *be the first to know about promotional offers.*



It's easy to stay up-to-date with www.savio.it all it takes is a click!

Savio S.p.A. Via Torino, 25 (S.S. 25)
10050 Chiusa S. Michele (TO) Italy
Tel.+39.011.964.34.64 - Fax+39.011.964.34.74
www.savio.it - e-mail: savio@savio.it

SAVIO
*Quality and innovation
for closing systems*