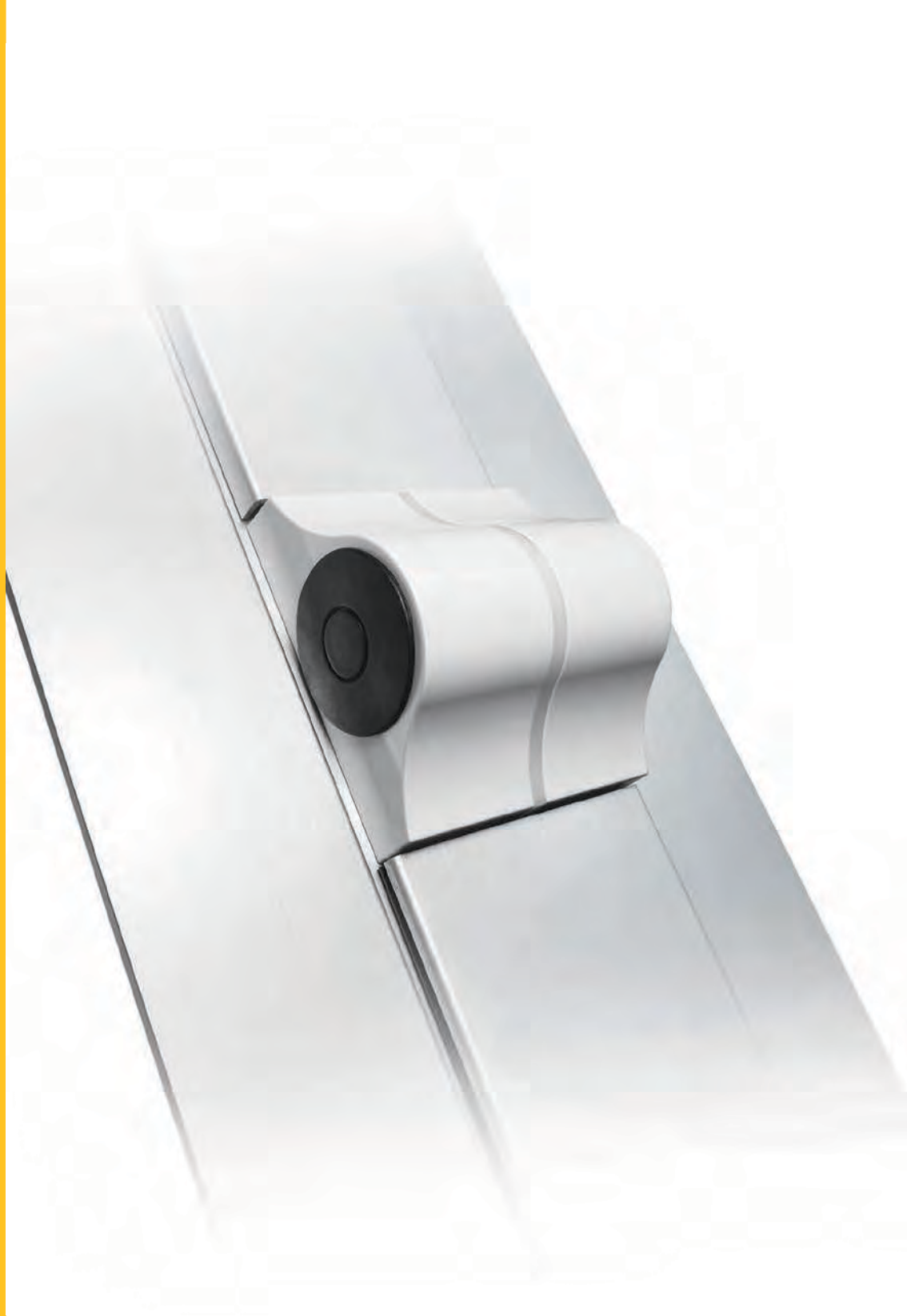


PIVOTY PIVOT HINGES



Complete range of pivot hinges for pivot casement

- Just a few versions to cover a wide range of profiles
- Updated aesthetics
- Weight capacities: 80 ÷ 120 kg based on the axis and on the pivot models; up to 150 Kg with the use of an additional reinforcement (horizontal pivot casement only)
- Easy to fix and high robustness
- Perimeter closing also available

Pivoty.

Savio's new pivot hinge for pivot casement: style, functionality and extreme sturdiness.



PIVOTY is a new range of pivot hinges that can be applied to all kinds of pivot windows. Just a few versions to fit all the main sets of profiles with weight capacities from 80 kg (vertical pivot windows) to 120 kg (horizontal and vertical pivot windows), up to 150 kg by adding the reinforcement art. 1152.701 (horizontal pivot window only). Its qualities are: versatility, sturdiness and very easy assembly. Moreover, PIVOTY can be used with the new perimeter closing.



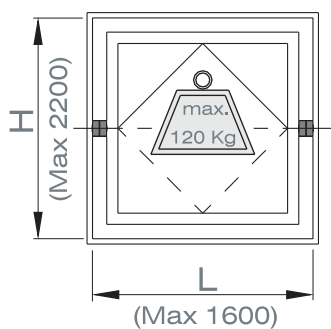
Discover the new line of pivot hinges for Savio pivot casements.

SAVIO
Open mind for closing systems.

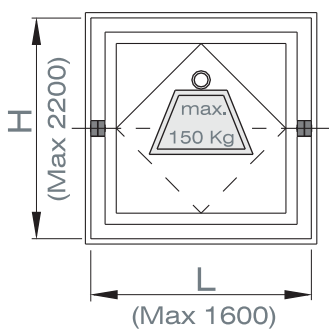
Application fields

	HORIZONTAL AXIS	VERTICAL AXIS
Leaf width	Max 1600 mm	
Leaf height	Max 2200 mm	
Leaf weight capacity	Max 120 Kg	Max 80 Kg (art. 1152.1 - 1152.2 - 1152.22) Max 120 Kg (art. 1152.51 - 1152.52 - 1152.72)
	Max 150 Kg with the additional reinforcement art. 1152.701	

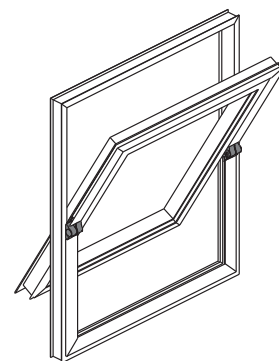
HORIZONTAL AXIS



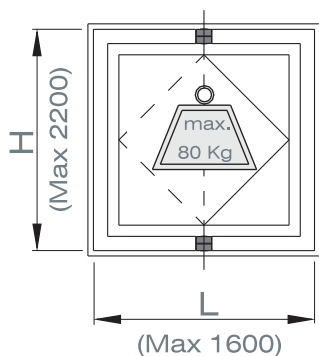
1152.1/.2/.22



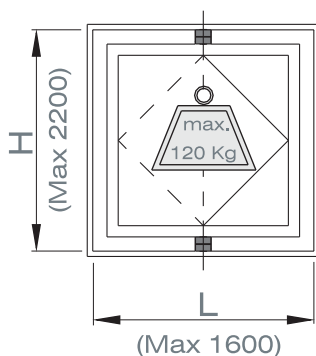
1152.1/.2/.22 + 1152.701



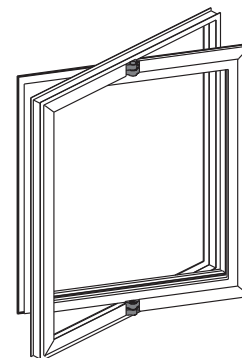
VERTICAL AXIS



1152.1/.2/.22

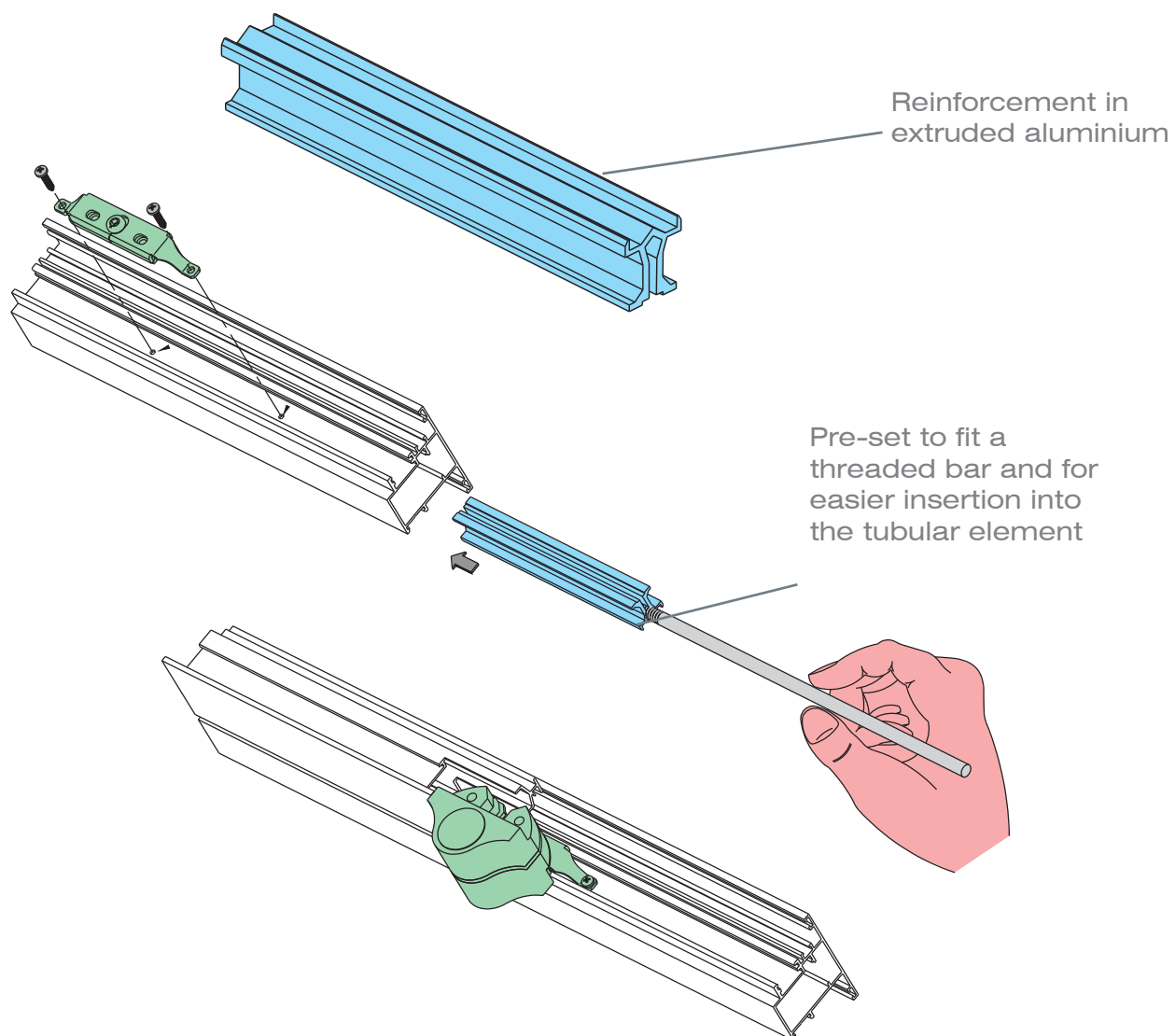


1152.51/.52/.72

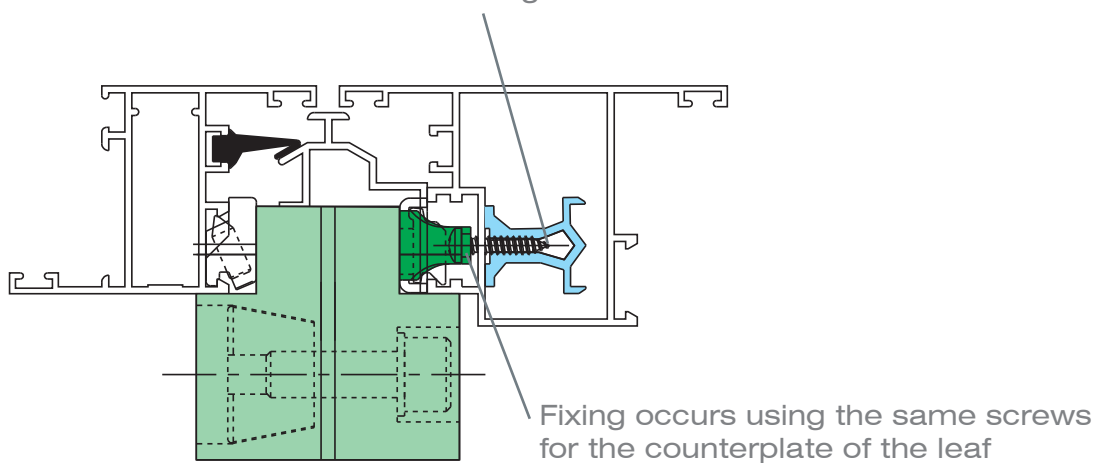


Reinforcement for weight capacities up to 150 kg (art. 1152.701)

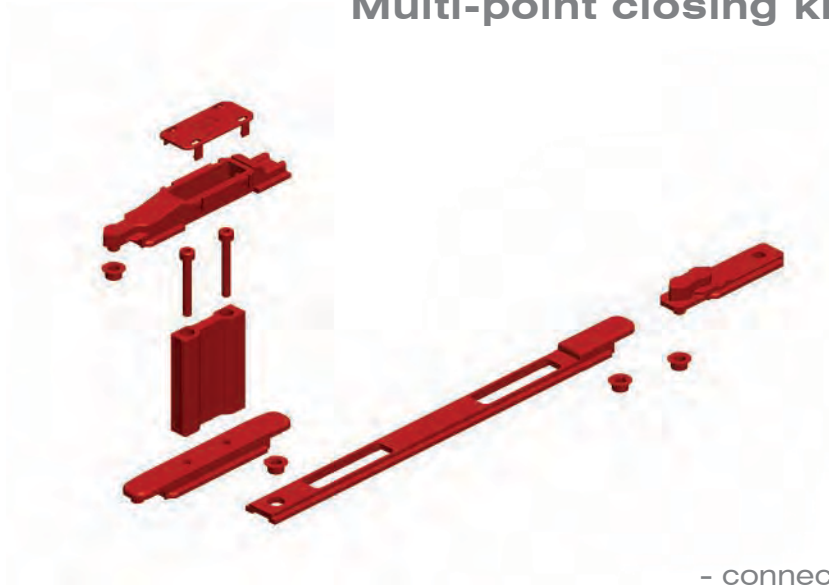
To be combined with hinges art. 1152.1/.2/.22
(only for horizontal pivot windows)



Easy to centre with respect to the hinge
since it is screwed onto a groove

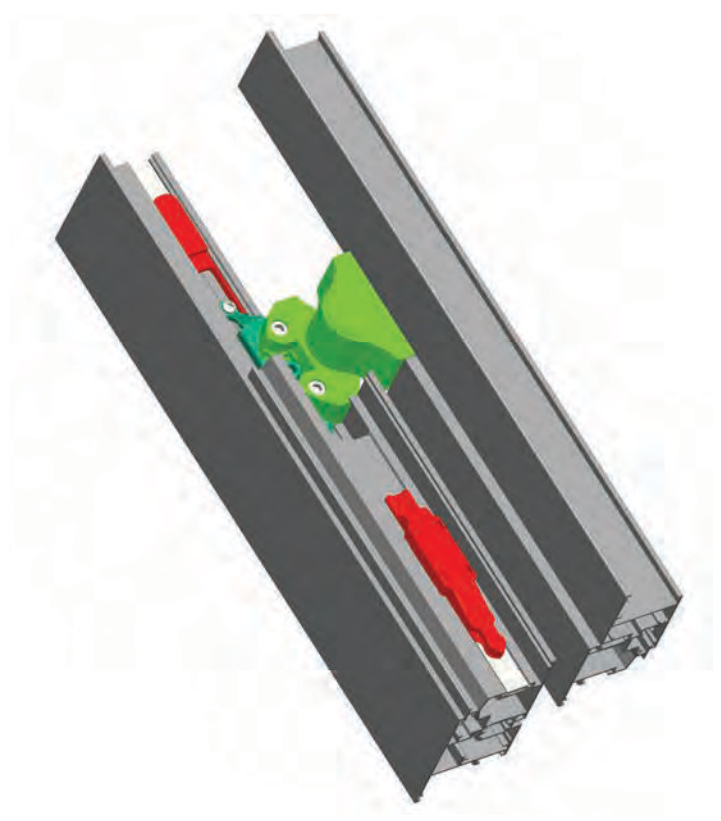
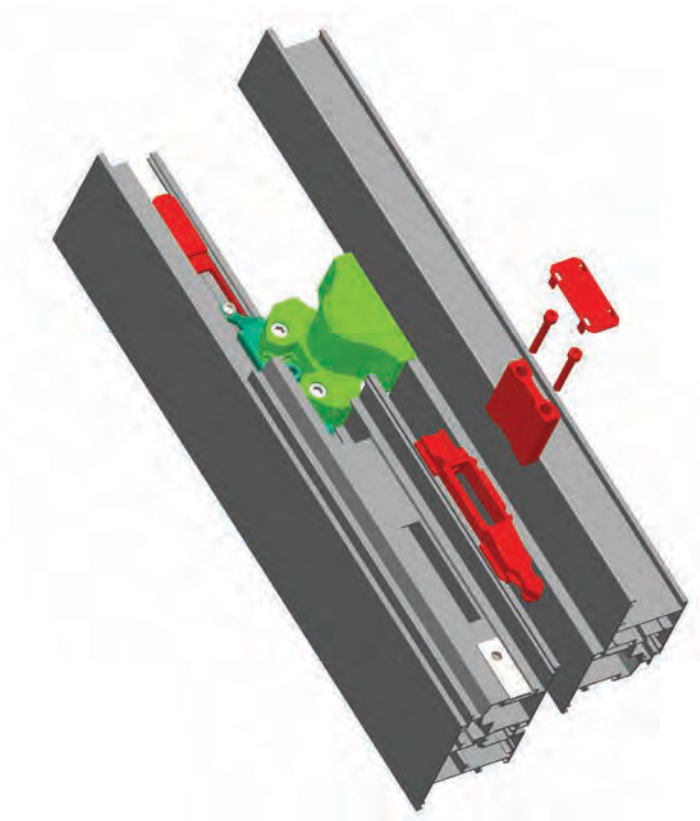


Multi-point closing kit art. 1152.820

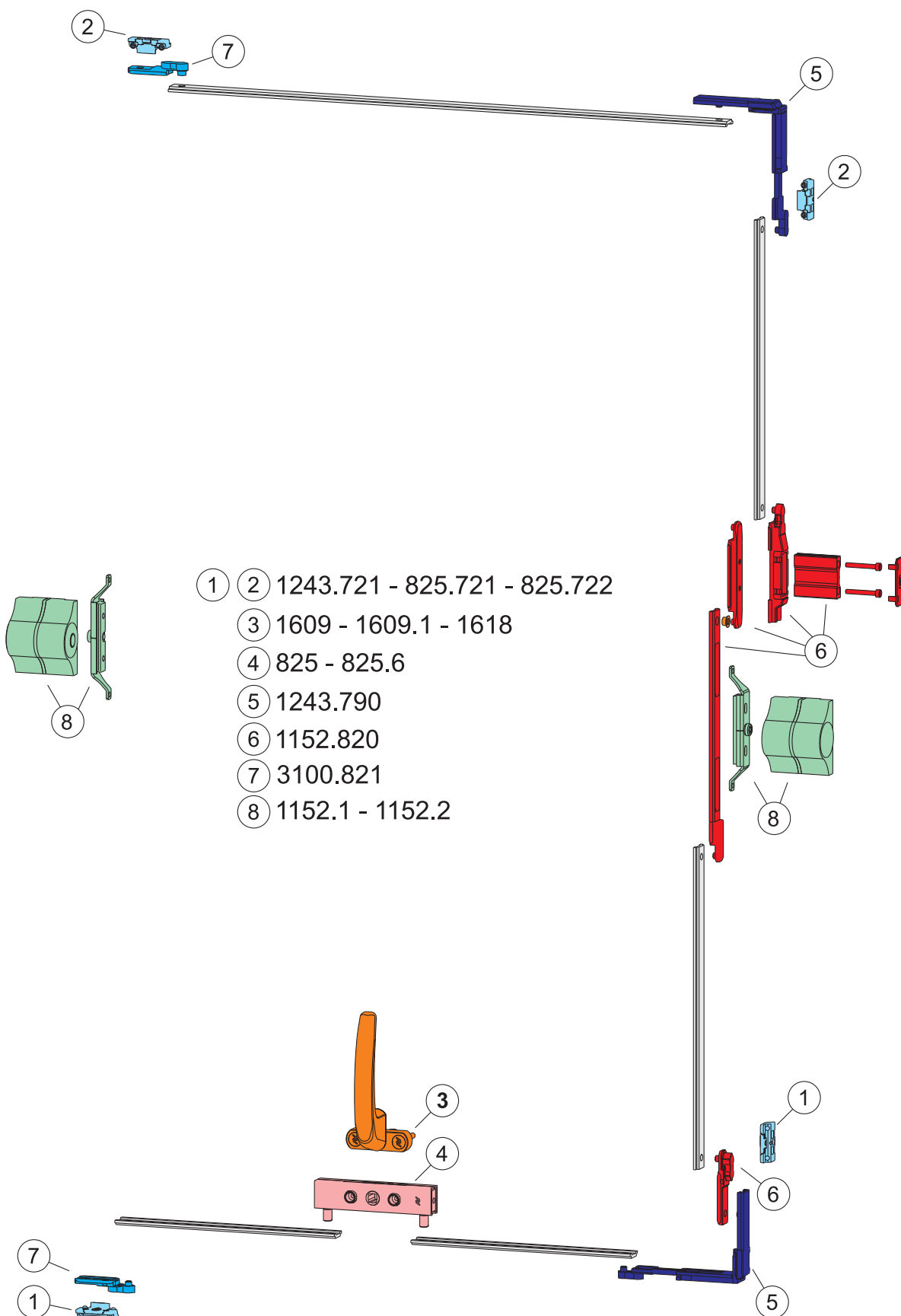


Main features:

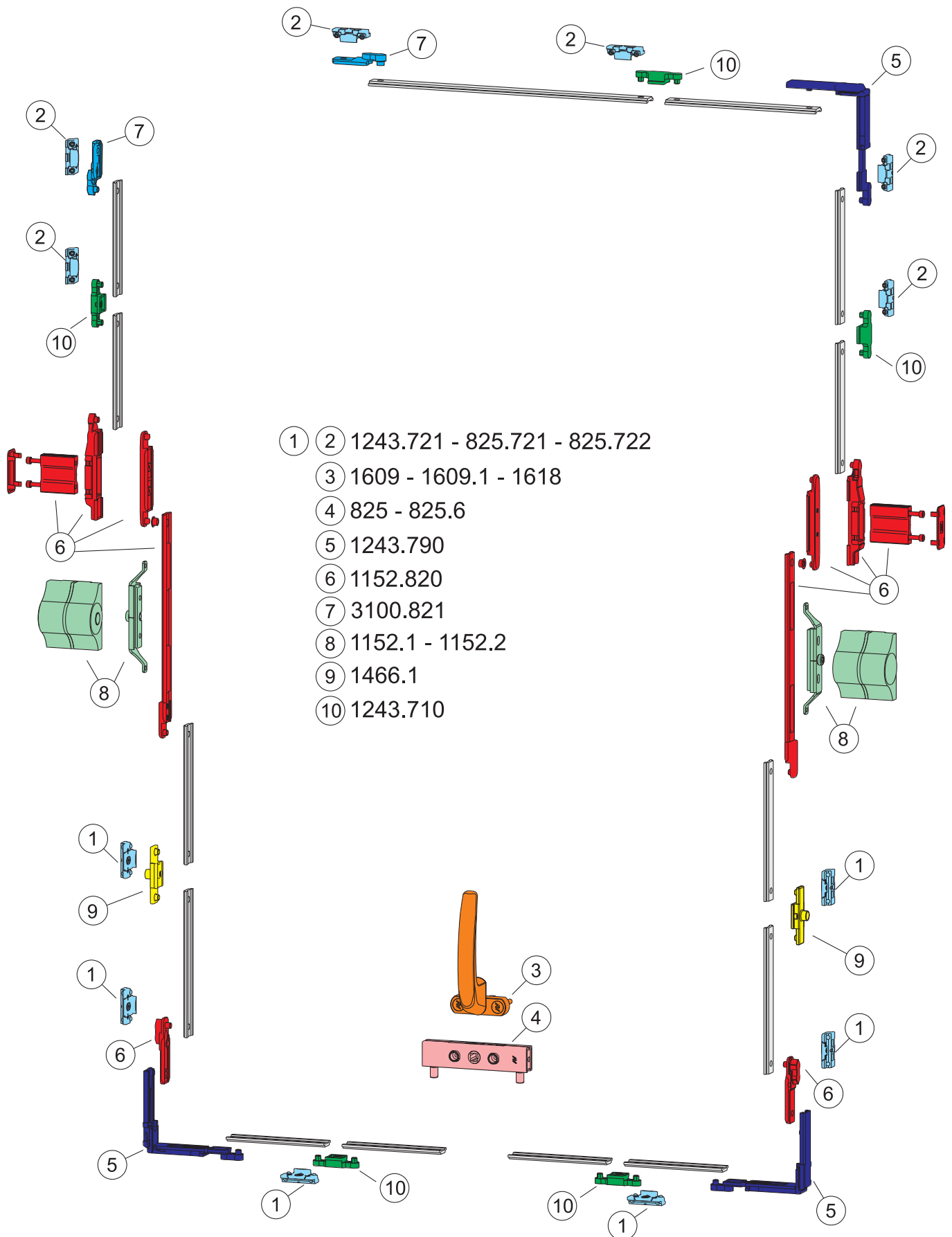
- a single component for both horizontal and vertical pivot windows
- versatile for multiple locking points
- can be used on leaf profiles with double groove (15 ÷ 20 mm)
- easy installation and minimum machining required
- can be installed with reverser profile ù already assembled on the leaf
- anodized rod pre-machined to pass underneath the friction hinge
- connecting elements in black galvanized zamak



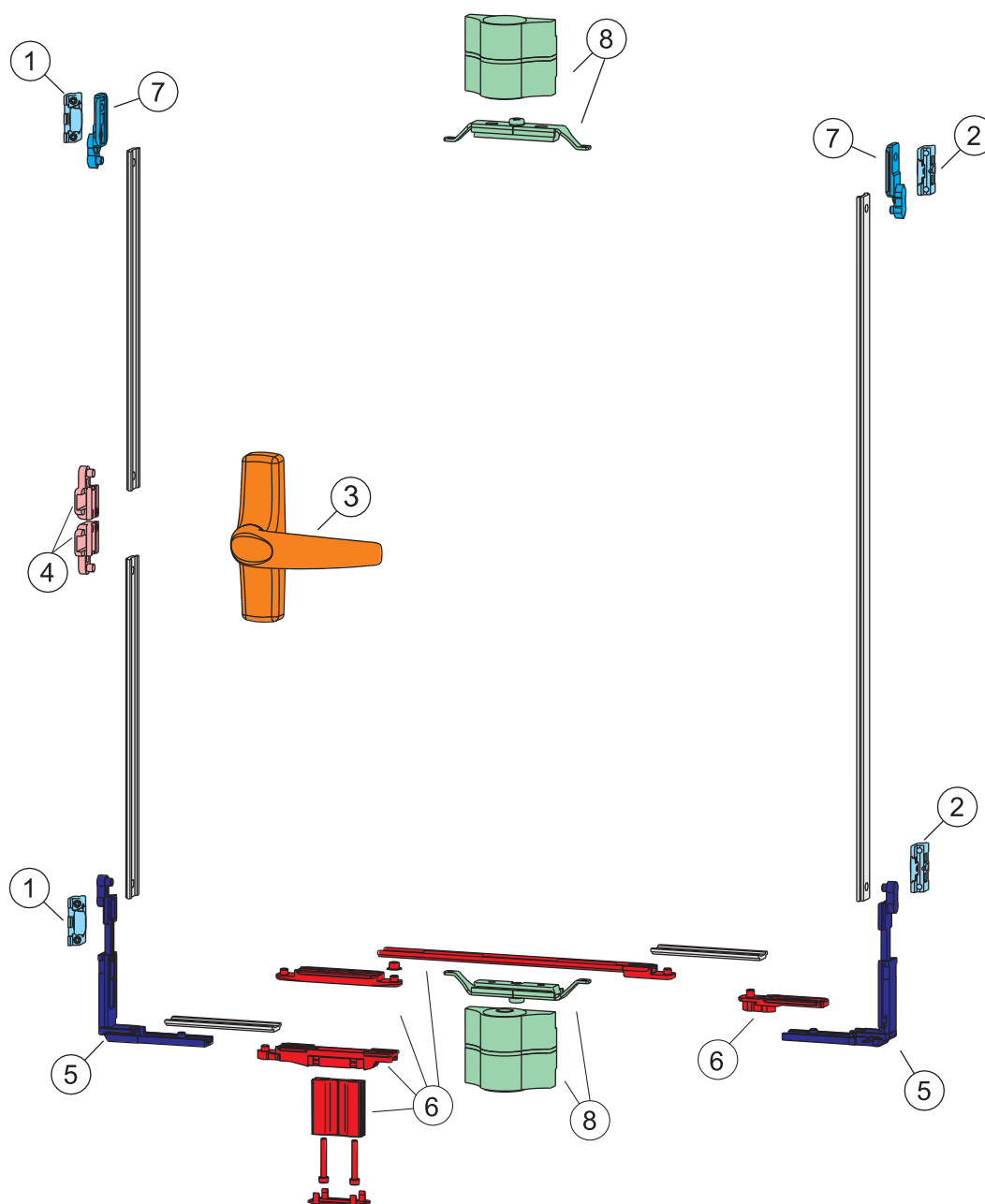
Horizontal axis Perimeter closing (4 locking points)



Horizontal axis Perimeter closing (multiple locking points)

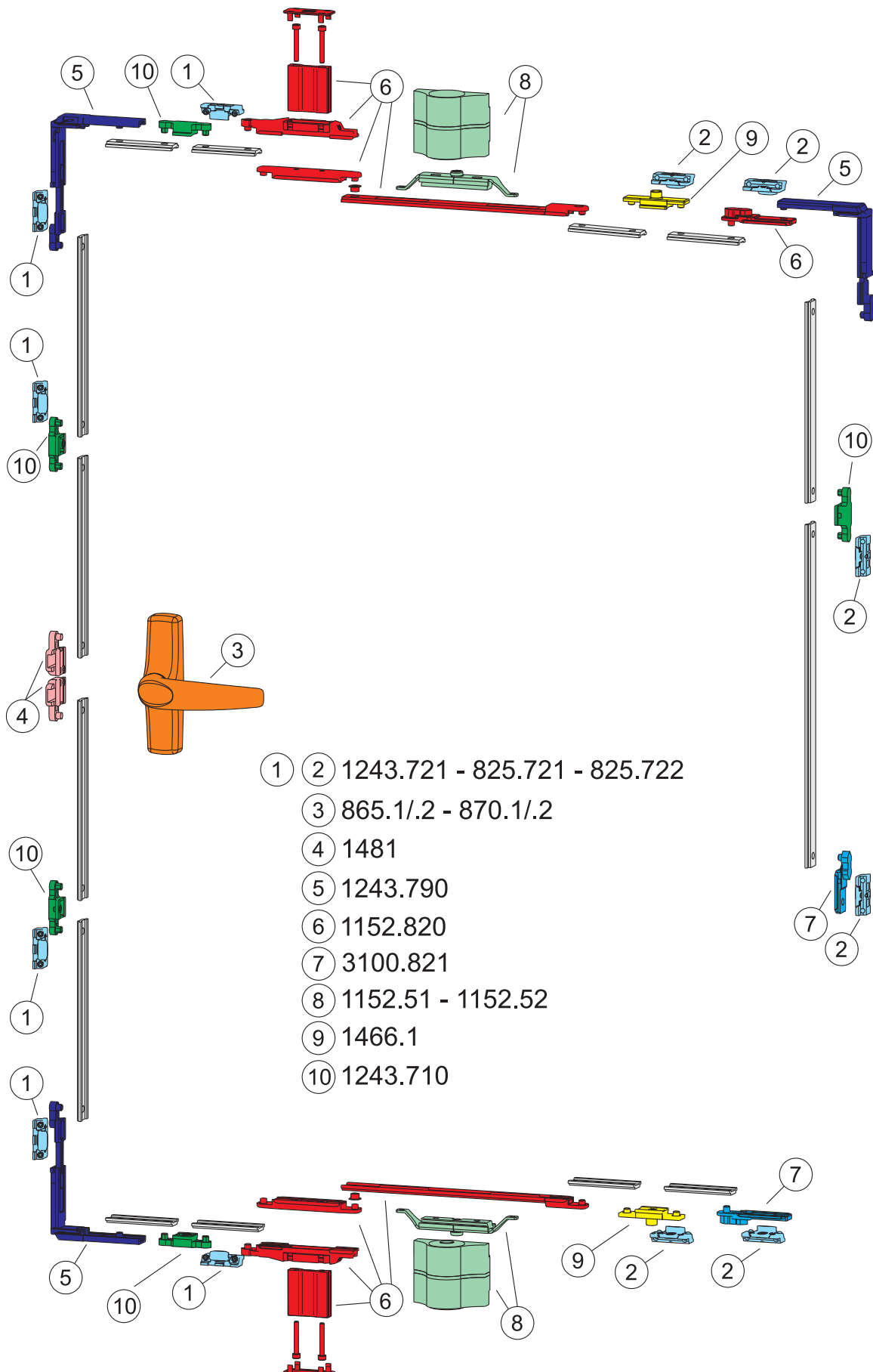


Vertical axis Perimeter closing (4 locking points)



- ① ② 1243.721 - 825.721 - 825.722
- ③ 865.1/2 - 870.1/2
- ④ 1481
- ⑤ 1243.790
- ⑥ 1152.820
- ⑦ 3100.821
- ⑧ 1152.51 - 1152.52

Vertical axis Perimeter closing (multiple locking points)



Suitability summary

Extruder	Profile	① (*)	② (*)
ALL.CO	ALCOTEC 72	825.722	825.722
ALL.CO	EXPORT 45	825.722	825.722
ALL.CO	EXPORT 45 TT	825.722	825.722
ALL.CO	EXPORT 50	825.722	825.722
ALL.CO	EXPORT 50 TT	825.722	825.722
ALL.CO	EXPORT 51 TT	825.722	825.722
ALL.CO	EXPORT 68 TT	825.722	825.722
ALL.CO	K 40	825.722	825.722
ALLU SISTEMI	CX 600	825.722	1243.721
ALLU SISTEMI	CX 700	825.722	1243.721
ALSISTEM	PLANET 45	825.722	1243.721
ALSISTEM	PLANET 62TT	825.722	1243.721
ETA	ROAD 520 TT CE	825.722	1243.721
ETA	ROAD 600 TT CE	825.722	1243.721
ETA	START 410	825.722	1243.721
ETA	START 560 TT	825.722	1243.721
GEAL	HF 580	825.722	1243.721
GEAL	HP 600	825.722	1243.721
GEAL	HP 700	825.722	1243.721
HYDRO	BREAK PA 52	825.721	825.721
HYDRO	BREAK PA 63	825.721	825.721
HYDRO	BREAK PA 70S	825.721	825.721
HYDRO	BRIGHT PA 70S	825.721	825.721
HYDRO	DOMAL TOP	825.721	825.721
HYDRO	STOPPER PG	825.721	825.721
IBLEA COLOR	VUERRE 53 TT	825.722	825.722
INDINVEST	GOLD 400	825.722	1243.721
INDINVEST	GOLD 450	825.722	1243.721
INDINVEST	GOLD 450 TT	825.722	1243.721
INDINVEST	GOLD 490	825.722	1243.721
INDINVEST	GOLD 500	825.722	1243.721
INDINVEST	GOLD 502 HC	825.722	1243.721
INDINVEST	GOLD 600	825.722	1243.721
INDINVEST	GOLD 600 HC-E	825.722	1243.721
METRA	NC 50 I	825.721	1243.721
METRA	NC 50 STH	825.721	825.721
METRA	NC 65 STH	825.721	1243.721
METRA	NC 68 STH	825.721	825.721
PONZIOSUD	WINDSTOP 45	825.722	1243.721
PONZIOSUD	WINDSTOP 45 TT	825.722	1243.721
PONZIOSUD	WINDSTOP 55 TT	825.722	1243.721
PROFILATI	EKU 52 TT	825.722	825.722
PROFILATI	EKU 53	825.722	825.722
PROFILATI	EKU 64 TT	825.722	825.722
PROFILATI	EKU 66 TT	825.722	825.722

(*) For proper positioning of keepers 1 -2 on the casement, please refer to the technical diagrams shown in the previous pages.

PIVOTY pivot hinges and accessories



Art.	Description	Pcs.	Finishes
1152.1	PIVOTY (patented) Pair of pivot hinges in aluminium and nylon, frame support in white galvanized zamak, sash support in stainless steel, 8 white galvanized socket head cap screws M6x20. Weight capacity: horizontal pivot casement 120 Kg (150 Kg with reinforcement), vertical pivot casement 80 Kg.	2	1013, 9005, 9010, BL10, BR5, C, F, NE, SILV



Art.	Description	Pcs.	Finishes
1152.2	PIVOTY (patented) Pair of pivot hinges in aluminium and nylon, frame support in white galvanized zamak, sash support in stainless steel, caps and spacers (2 of 1 mm and 2 of 2 mm) in black nylon, 8 white galvanized socket head cap screws M6x20. Weight capacity: horizontal pivot casement 120 Kg (150 Kg with reinforcement), vertical pivot casement 80 Kg.	2	1013, 9005, 9010, BL10, BR5, C, F, NE, SILV



Art.	Description	Pcs.	Finishes
1152.22	PIVOTY (patented) Pair of pivot hinges in aluminium and nylon, frame support in white galvanized zamak, sash support in stainless steel, caps and spacers (2 of 1 mm and 2 of 2 mm) in black nylon, 8 white galvanized socket head cap screws M6x20. Weight capacity: horizontal pivot casement 120 Kg (150 Kg with reinforcement), vertical pivot casement 80 Kg.	2	1013, 9005, 9010, BL10, BR5, C, F, NE, SILV



Art.	Description	Pcs.	Finishes
1152.51	PIVOTY (patented) Pair of vertical pivot hinges with thrust bearing in aluminium and nylon, frame support in white galvanized zamak, sash support in stainless steel, 8 white galvanized socket head cap screws M6x20. Weight capacity: vertical pivot casement 120 Kg.	2	1013, 9005, 9010, BL10, BR5, C, F, NE, SILV



Art.	Description	Pcs.	Finishes
1152.52	PIVOTY (patented) Pair of vertical pivot hinges with thrust bearing in aluminium and nylon, frame support in white galvanized zamak, sash support in stainless steel, 8 white galvanized socket head cap screws M6x20. Weight capacity: vertical pivot casement 120 Kg.	2	1013, 9005, 9010, BL10, BR5, C, F, NE, SILV

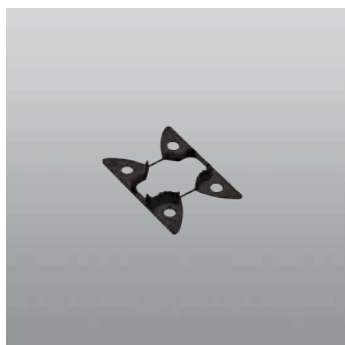
PIVOTY pivot hinges and accessories



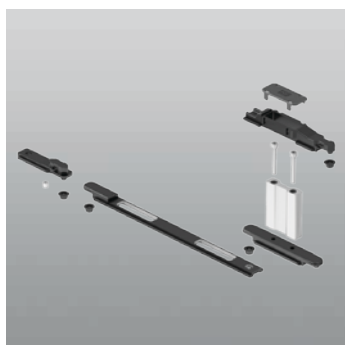
Art.	Description	Pcs.	Finishes
1152.72	PIVOTY (patented) Pair of vertical pivot hinges with thrust bearing in aluminium and nylon, frame support in white galvanized zamak, sash support in stainless steel, 8 white galvanized socket head cap screws M6x20. Weight capacity: vertical pivot casement 120 Kg.	2	1013, 9005, 9010, BL10, BR5, C, F, NE, SILV



Art.	Description	Pcs.	Finishes
1152.701	Pivot hinge reinforcement in mill-finished aluminium. To use with art. 1152.1 - 1152.2 - 1152.22 in order to obtain weight capacities up to 150 Kg (only horizontal pivot casement).	6	






Art.	Description	Pcs.	Finishes
1152.800	Spacers (1 of 1 mm and 1 of 2 mm) in black nylon.	40	



Art.	Description	Pcs.	Finishes
1152.820	Multi-point perimetric closing kit including: 1 connecting rod in mill-finished aluminium, 1 leaf pinion and 1 connecting corner drive locking piece in black galvanized zamak, bushings and caps in nylon, 2 socket head cap screws M4x30 in black galvanized steel, 1 pre-assembled pinion on reporting in black galvanized zamak and 1 pre-assembled M5x10 grub screw in stainless steel, 1 passage rod in black anodized aluminium with connecting locking piece in black galvanized zamak, pre-assembled.	6	

Handles for multi-point perimeter closing kit

	Art.	Description	Pcs.	Finishes
	865.1	ARIANNA (patented) Handle for casement in zamak, dist. between centres 84.5-98 mm, 2 TORX® (T15) cap screws M5x13 in stainless steel. PVD X, PVD H finishes packaging 5 pcs.	20	1013, 1015, 7035, 8017, 8019, 9001, 9005, 9010, B.MA, B.SA, BL10, BR5, BR801, GR217, GREY, PVD H, PVD X, SILV, VRD27
	Art.	Description	Pcs.	Finishes
	865.2	Like 865.2 but dist. between centres of 92-104 mm.	20	1013, 1015, 8017, 8019, 9001, 9005, 9010, B.SA, BL10, BR5, BR801, GR217, GR51, GREY, PVD H, PVD X, SILV
	Art.	Description	Pcs.	Finishes
	865.753	ARIANNA (patented) Handle for casement opening in zamak, with safety cylinder (same keys), dist. between centres 84.5-98 mm, 2 TORX® (T15) cap screws M5x13 in stainless steel. PVD X, PVD H finishes packaging 5 pcs.	10	1013, 1015, 8017, 8019, 9001, 9005, 9010, B.SA, BL10, BR5, BR801, GR217, GREY, PVD H, PVD X, SILV
	Art.	Description	Pcs.	Finishes
	865.754	Like 865.753 but dist. between centres of 92-104 mm.	10	1013, 1015, 8017, 8019, 9001, 9005, 9010, B.SA, BL10, BR5, BR801, GR217, GREY, PVD H, PVD X, SILV
	Art.	Description	Pcs.	Finishes
	870.1	MANON (patented) Handle for casement in die-cast metal or brass, dist. between centres 84.5-98 mm, 2 TORX® (T15) cap screws M5x13 in stainless steel (for C and OTT finishes 2 TORX® T15 cap screws M5x10). PVD X, PVD H and OTT finishes packaging 5 pcs.; C finish: packaging 50 pcs.	20	1013, 1015, 1035, 1247, 6002, 6005, 7016, 7032, 7035, 8017, 8019, 9001, 9005, 9010, 9016, B.MA, B.SA, BL10, BR5, BR801, BW21, C, GR217, GR606, GREY, OTT, PVD H, PVD X, RD501, SILV, VRD27, WT005
	Art.	Description	Pcs.	Finishes
	870.2	Like 870.2 but dist. between centres of 92-104 mm and no finishes 1035, 1247, 7016, BL25, GREY, VRD27 but also finishes 3003, 7047, GR50, GR51.	20	
	Art.	Description	Pcs.	Finishes
	870.753	MANON (patented) Handle for casement in die-cast metal or brass, with safety cylinder (same keys), dist. between centres 84.5-98 mm, 2 TORX® (T15) cap screws M5x13 in stainless steel (OTT: 2 TORX® T15 cap screws M5x10). OTT finishes packaging 5 pcs.; C finish: packaging 50 pcs.	10	1013, 1015, 1035, 6002, 6005, 7016, 7032, 7035, 8019, 9001, 9005, 9010, 9016, B.SA, BL10, BR5, BW21, C, GR217, GREY, OTT, SILV
	Art.	Description	Pcs.	Finishes
	870.754	Like 870.753 but dist. between centres of 92-104 mm.	10	1013, 1015, 6002, 7032, 7035, 8017, 8019, 9001, 9005, 9010, 9016, B.SA, BL10, BR5, BR801, BW21, C, GR217, OTT, PVD H, PVD X, SILV, WT005
	Art.	Description	Pcs.	Finishes
	1609	Snap-latch with reduced base and handle made of aluminum and nylon with 7 mm squared spindle and 2 zinc-plated steel countersunk head screw M5x35. To use with art. 825/825.6.	5	9005, 9010, C
	Art.	Description	Pcs.	Finishes
	1609.1	Snap-latch with reduced base and handle made of aluminum and nylon with 7 mm square spindle (62,5mm projecting part) and 2 zinc-plated steel countersunk head screw M5x70. To use with art. 825/825.6.	5	9005, 9010, C

Handles for multi-point perimetric closing kit



Art.	Description	Pcs.	Finishes
1618	SABBIA Single handle for art. 825, in aluminium (square spindle 8 mm), 1 pre-assembled grub screw M6x10 and 2 countersunk head screws M5x30 in stainless steel 304.	10	1013, 3003, 6005, 9001, 9010, C, F, NE, U, ZE

Other accessories for multi-point perimetric closing kit



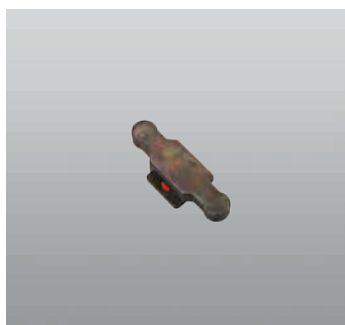
Art.	Description	Pcs.	Finishes
825	TAUDUE Multipoint locking device, 2 bushings and 2 threaded pins Ø 8x11 mm in galvanized steel, adapter for square of 7 mm in steel.	10	
825.6	TAUDUE Multipoint locking device, 2 threaded pins Ø 8x5 in galvanized steel, adapter for square of 7 mm in steel.	10	



Art.	Description	Pcs.	Finishes
825.721	Adjustable keeper in black galvanized zamak, 2 M5x12 grub screws and 1 countersunk head screw M4x8 in stainless steel, pre-assembled.	40	




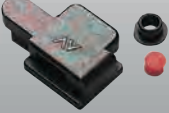



Art.	Description	Pcs.	Finishes
825.722	Adjustable keeper in black galvanized zamak, 2 M5x12 grub screws and 1 countersunk head screw M4x8 in stainless steel, pre-assembled.	40	



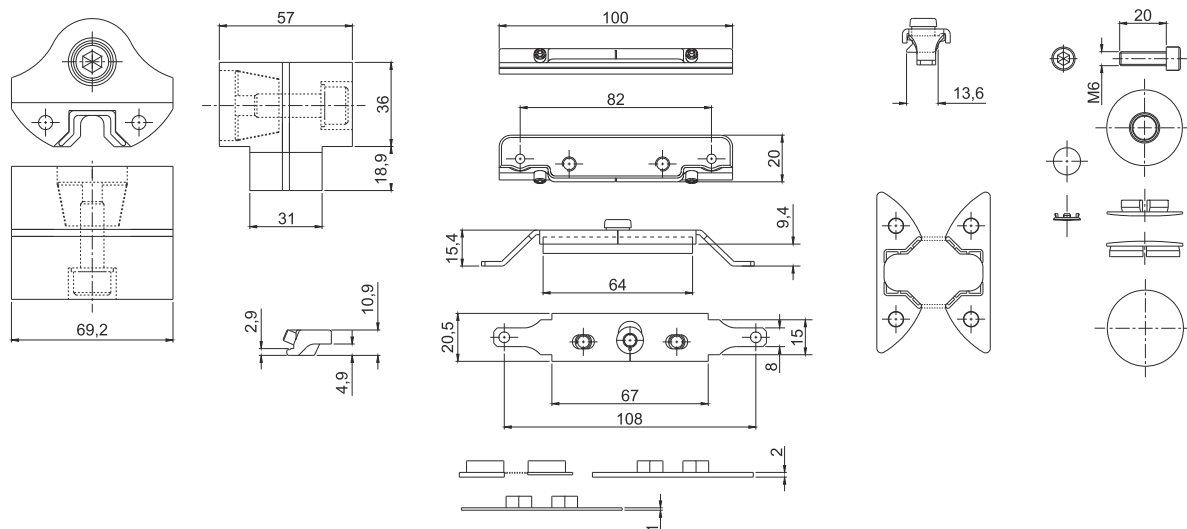
Art.	Description	Pcs.	Finishes
1243.710	Locking piece in black galvanized zamak, 1 polyurethane cap.	40	

Other accessories for multi-point perimetric closing kit

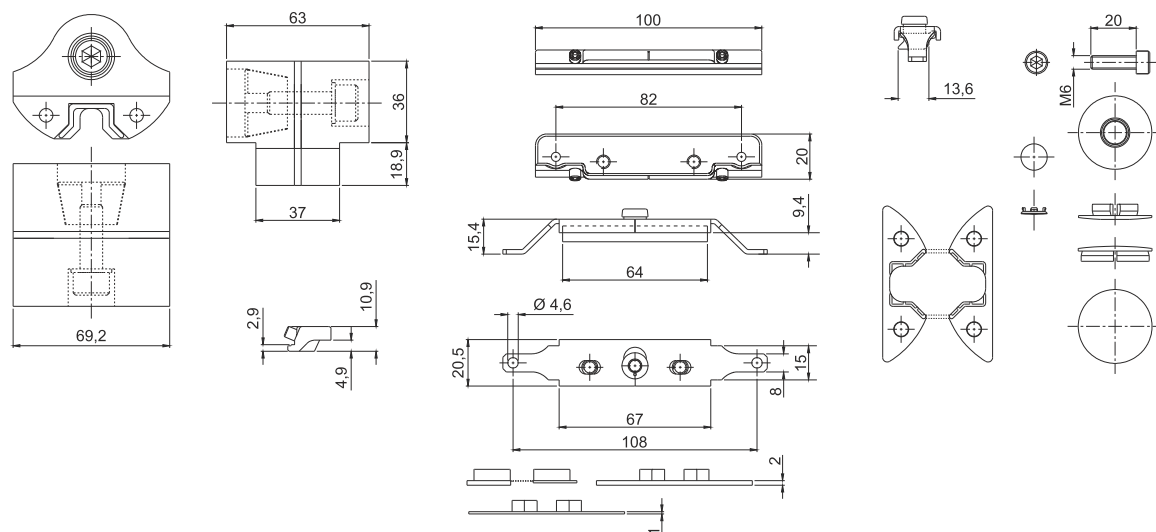
	Art.	Description	Pcs.	Finishes
	1243.721	Adjustable keeper in black galvanized zamak, 2 pre-assembled grub screws M5x12 and 1 countersunk head screw M4x8 in stainless steel 304.	40	
	Art.	Description	Pcs.	Finishes
	1243.790	Upper corner drive in black galvanized zamak.	10	
	Art.	Description	Pcs.	Finishes
	1466.1	Terminal or intermediate locking piece in black galvanized zamak, 1 polyurethane cap and 2 nylon bushings Ø 6-Ø 8.	100	
	Art.	Description	Pcs.	Finishes
	1481	Connection piece in black galvanized zamak, 1 polyurethane cap, 1 nylon bushing Ø 6-Ø 8.	200	
	Art.	Description	Pcs.	Finishes
	3100.821	Locking piece in black galvanized zamak, 1 cup in low density polyethylene (LDPE), 1 bushing Ø 6-Ø 8 mm.	40	

PIVOTY pivot hinges and accessories

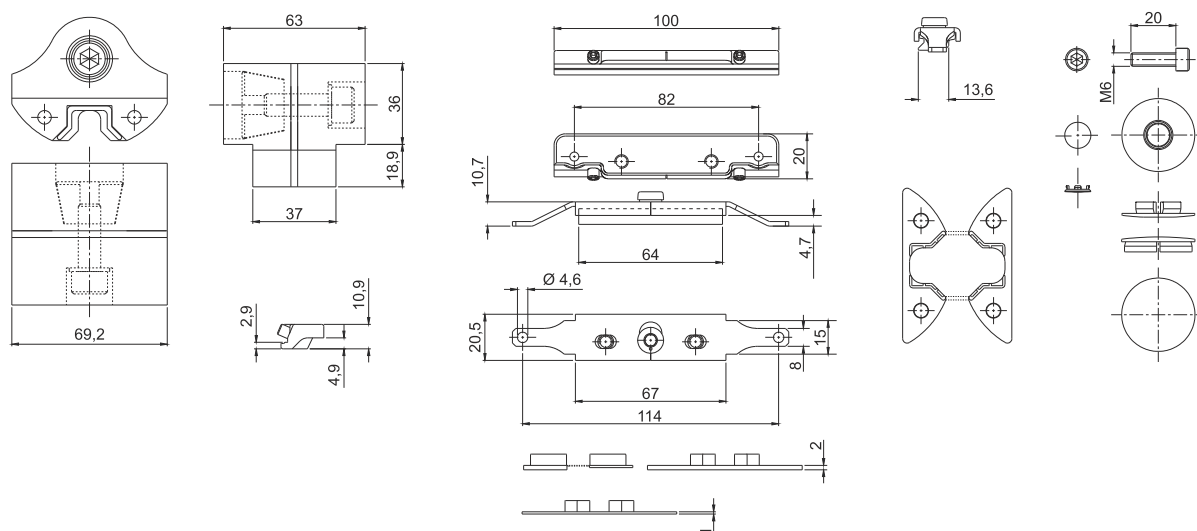
1152.1



1152.2

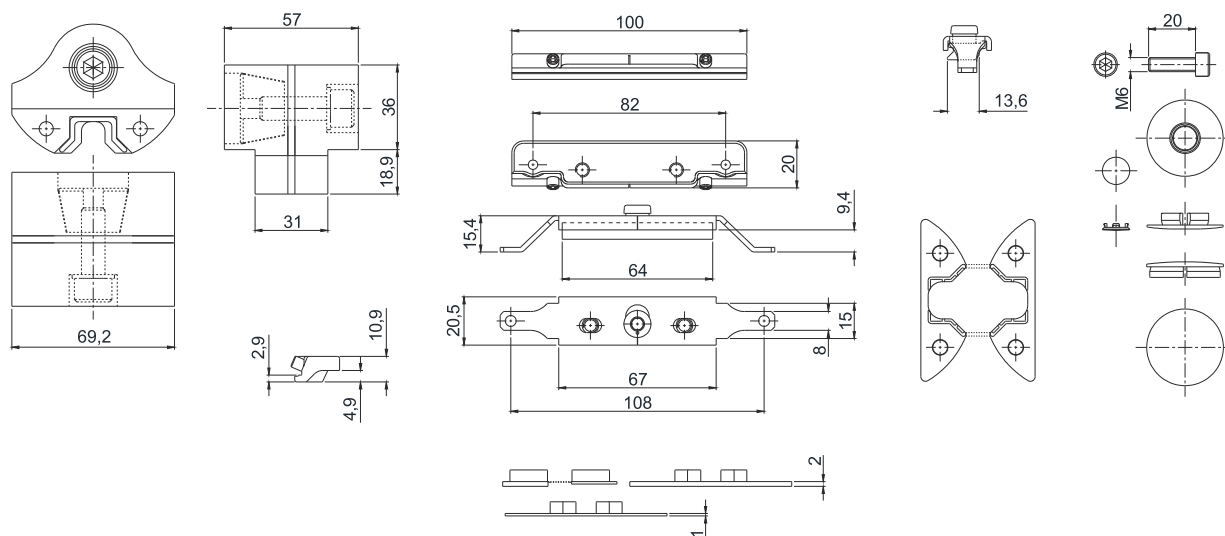


1152.22

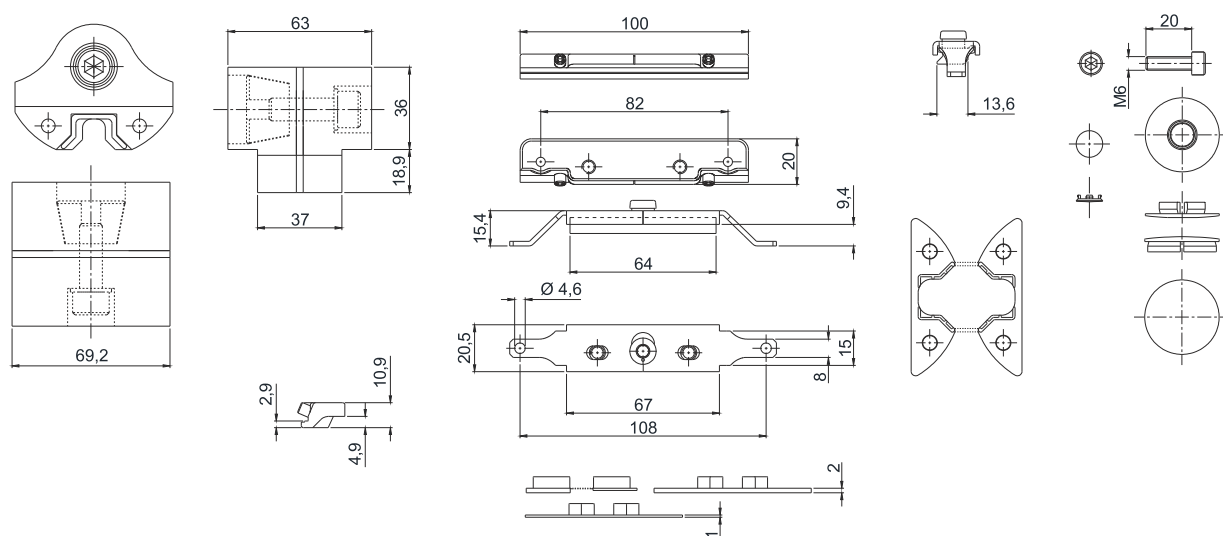


PIVOTY pivot hinges and accessories

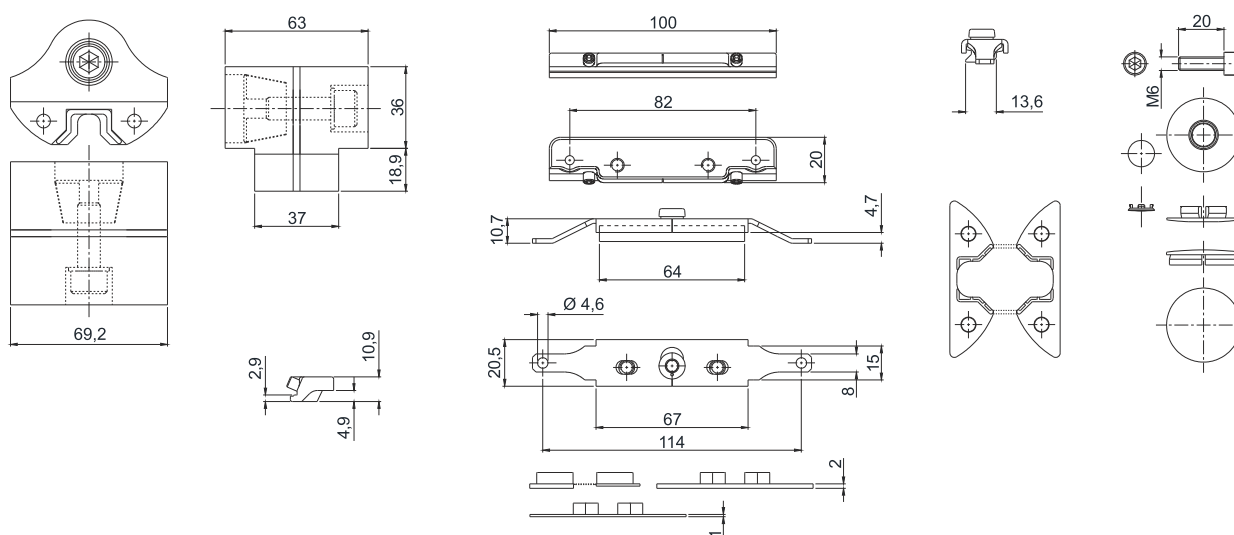
1152.51



1152.52

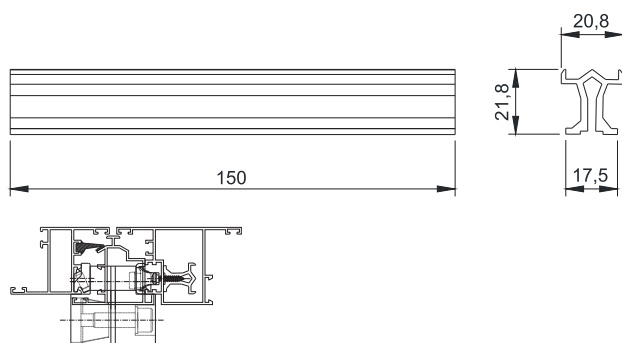


1152.72

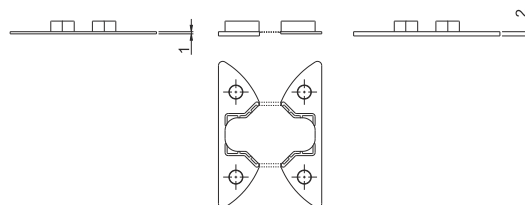


PIVOTY pivot hinges and accessories

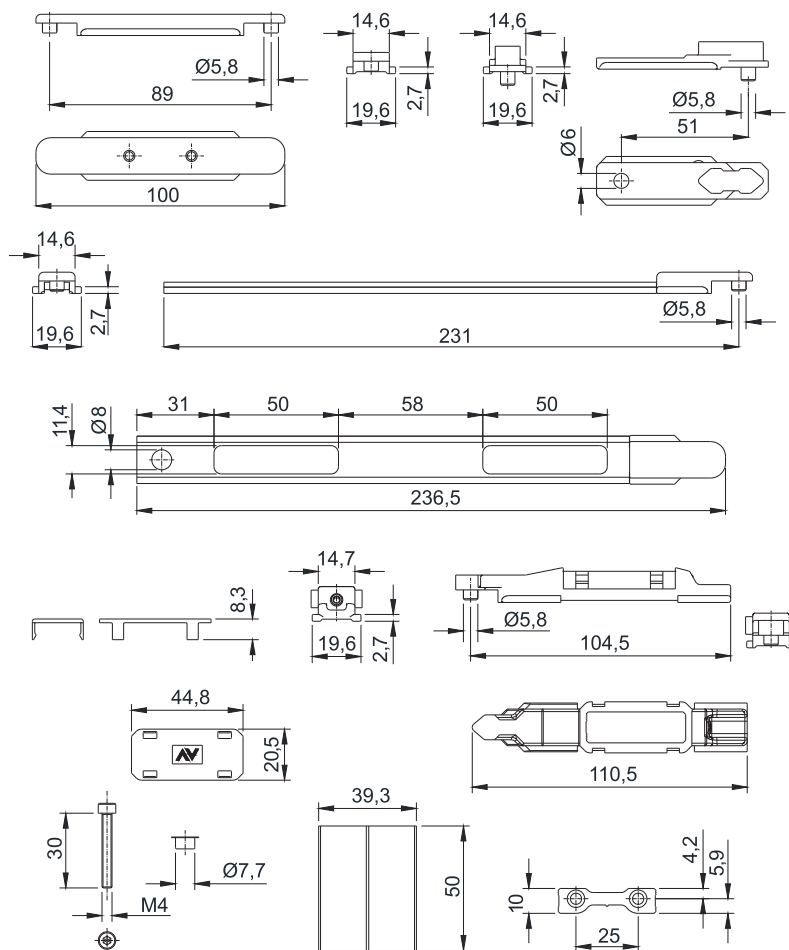
1152.701



1152.800

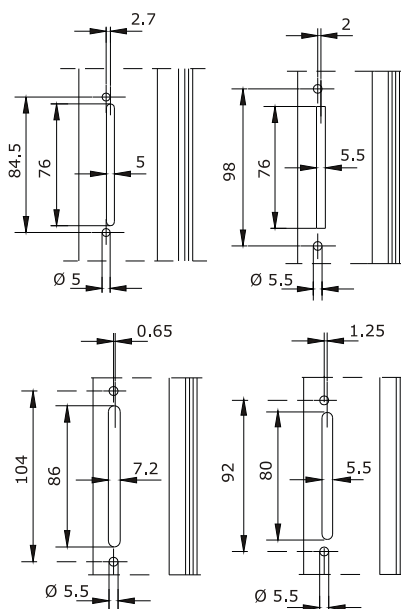
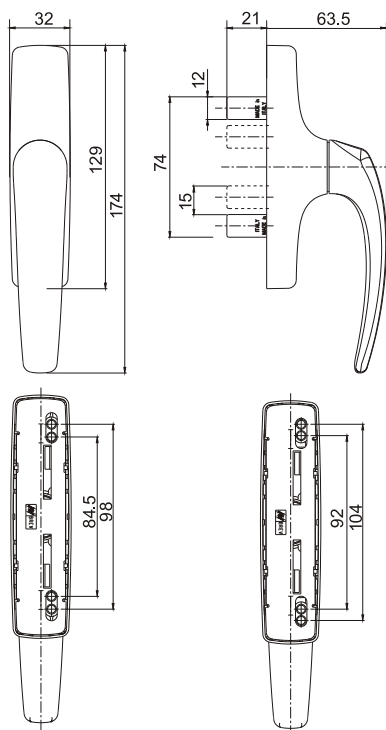


1152.820

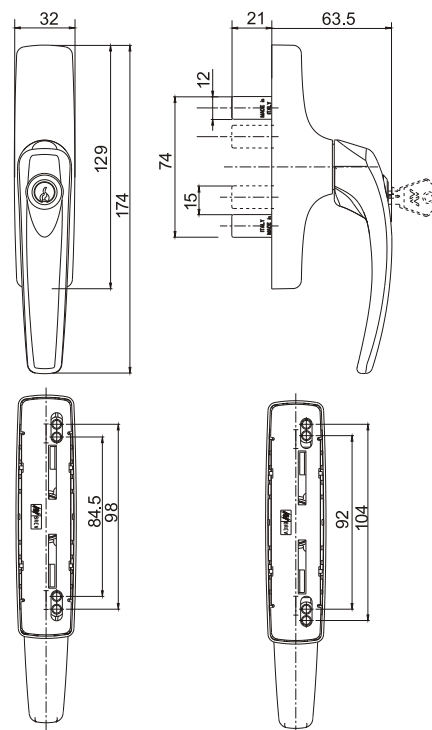


Handles for perimetric closing kit

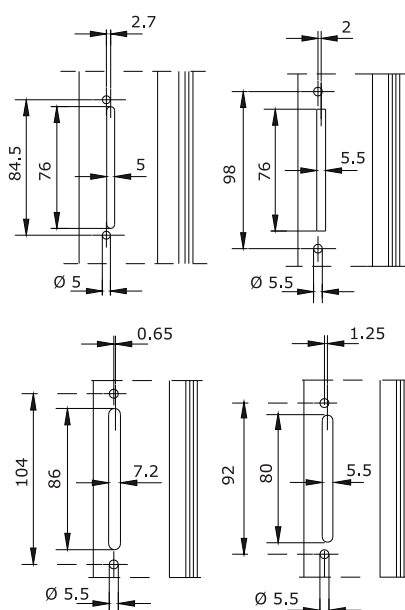
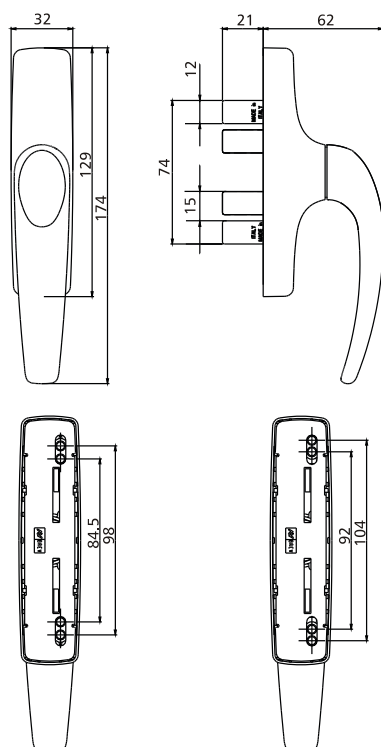
865.1 - 865.2



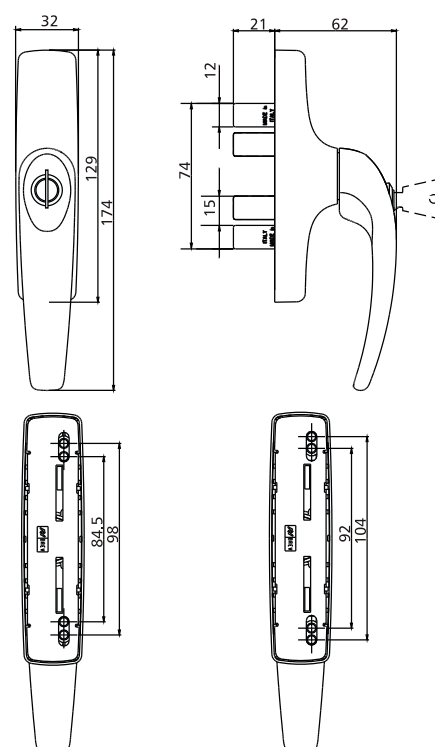
865.753 - 865.754



870.1 - 870.2

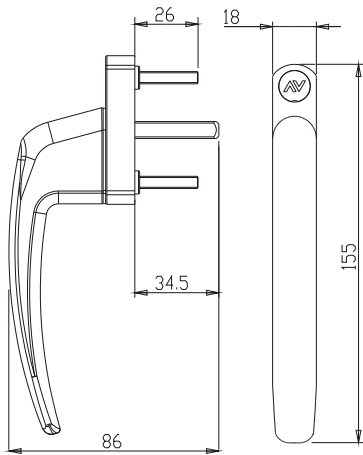


870.753 - 870.754

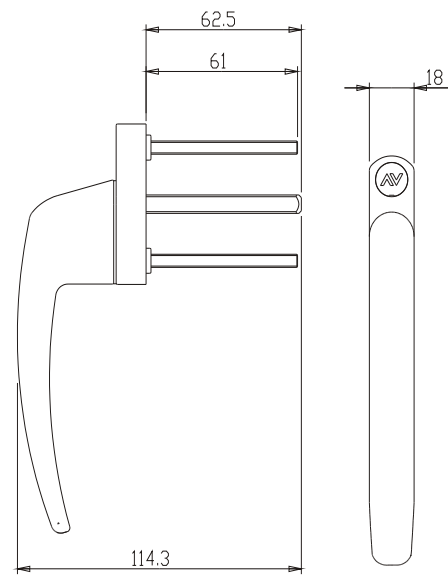


Handles for perimetric closing kit

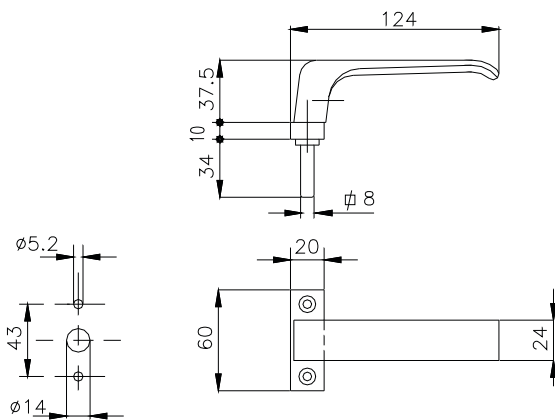
1609



1609.1

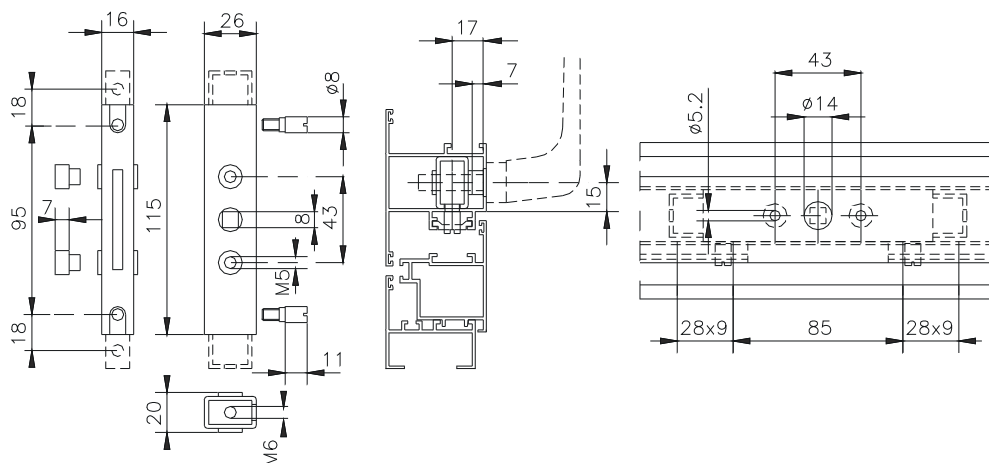


1618

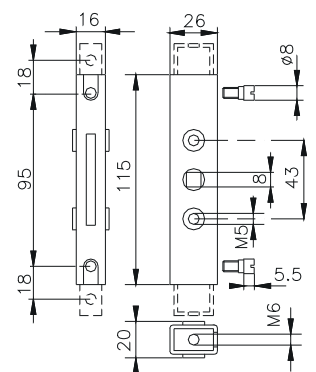


Other accessories for perimetric closing kit

825

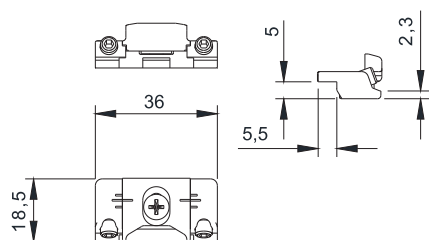


825.6

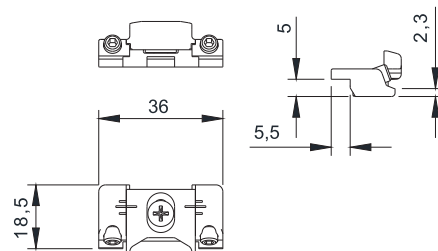


Other accessories for perimetric closing kit

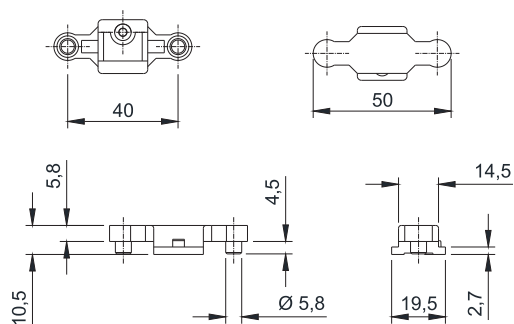
825.721



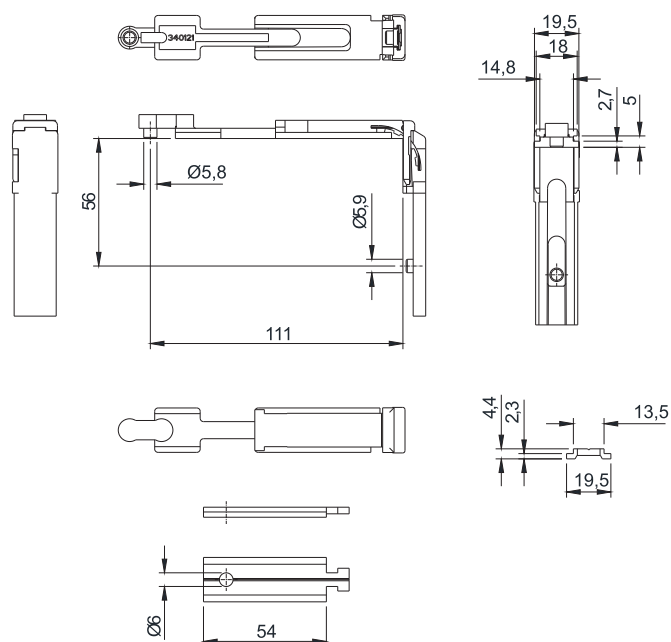
825.722



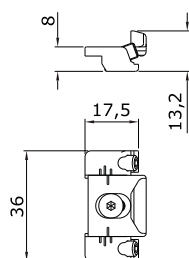
1243.710



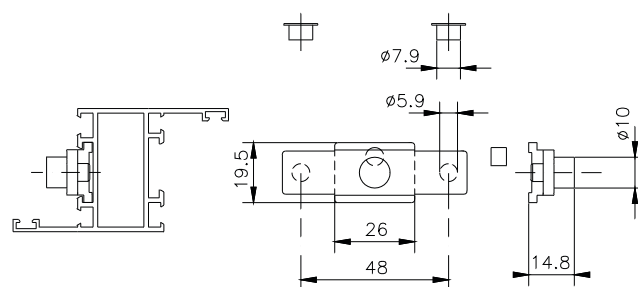
1243.790



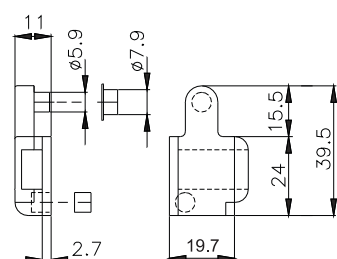
1243.721



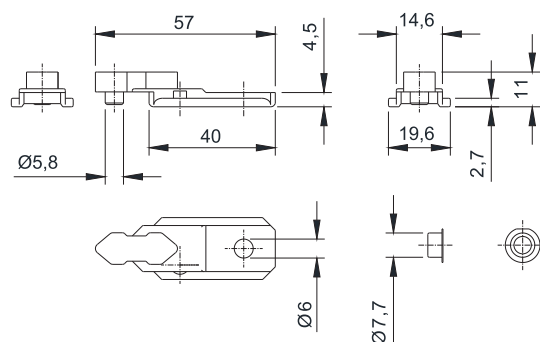
1466.1



1481



3100.821





Savio S.p.A.
Via Torino, 25 (S.S. 25) - 10050 Chiusa S. Michele (TO)
Tel. +39 011 964 34 64 - Fax +39 011 964 34 74
www.savio.it - export@savio.it

