

SLIDEART TS



TILT AND SLIDING PARALLEL MECHANISM

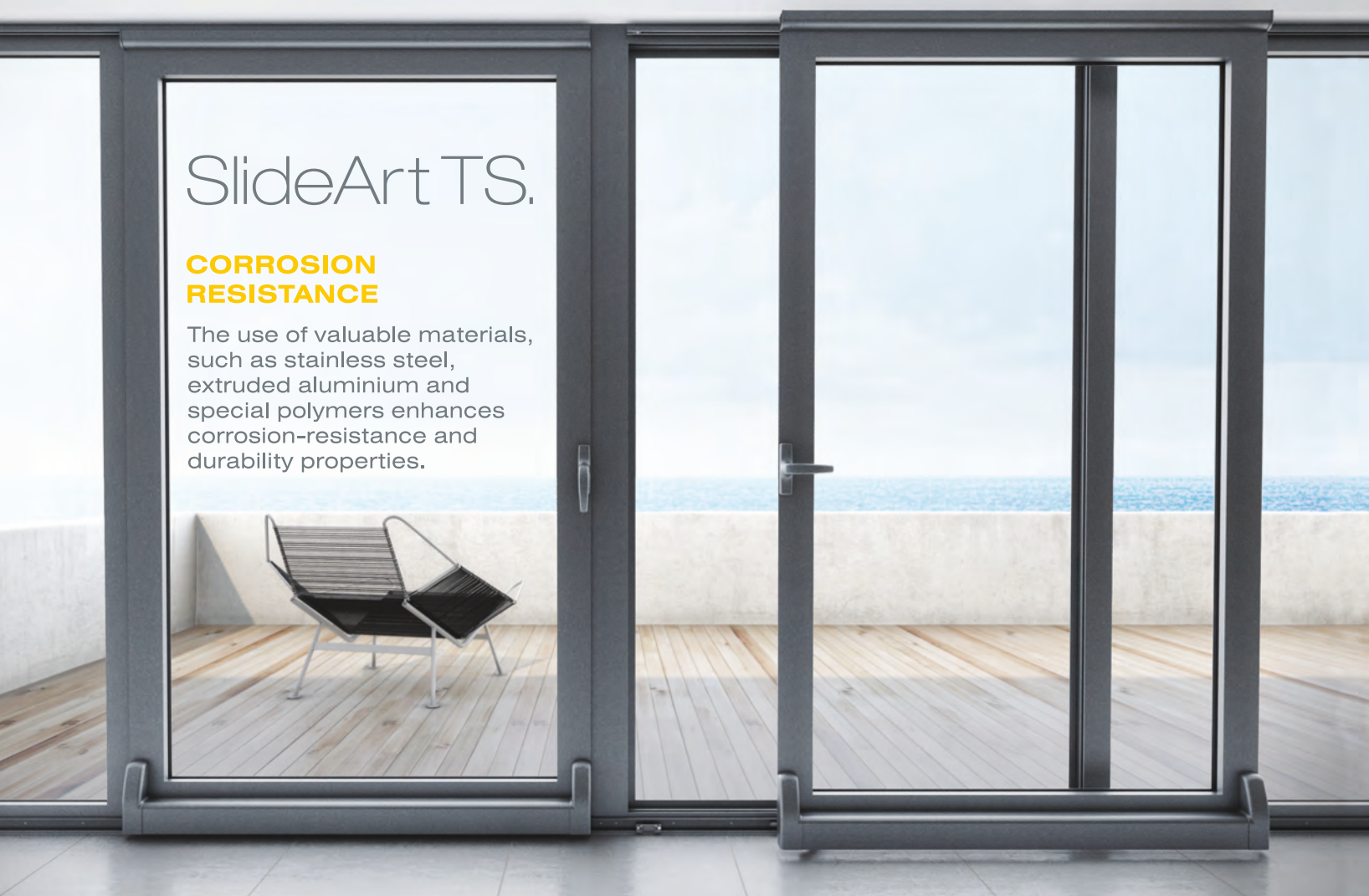
Specific for aluminium casements
Excellent performances
Easy to assembly
Tilt-and-sliding opening up to 133 mm
New look with customisable finishes
High corrosion resistance

NSAVIO

SlideArt TS.

CORROSION RESISTANCE

The use of valuable materials, such as stainless steel, extruded aluminium and special polymers enhances corrosion-resistance and durability properties.



Great looks and design.

Maximum freedom in terms of finishes thanks to the caps and covers that can be powder painted in the desired colour.

The special design harmonizes the shapes of all components, conceals the fixing accessories and eliminates machining on the profiles of guides and covers.

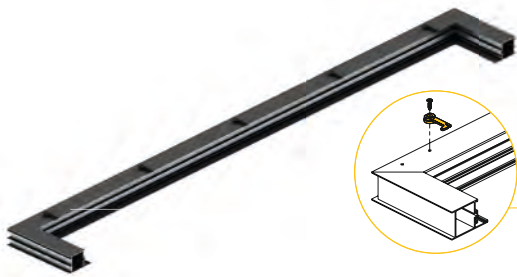


Wide range of standard finishes to choose from.
The **C mill finished version** can be customized in any finish.



The result is a perfect look,
which only Savio can offer.

Discover Savio **SlideArt TS**. The first tilt-and-sliding parallel mechanism specific for aluminium frames.



Great advantage in terms of appearance.

The upper guide on the frame is secured by means of **special reinforced nylon clips** that fit inside the rear of the guide itself. Thanks to the hidden fixing and to the fact that no holes have to be drilled in it, the guide can be painted in any colour.

Important technical innovations

The **spacer arms** are independent and positioned opposite one another, thus making the leaf position more stable during the opening movement. The **dual-action spring** allows the leaf to be opened more easily in the pushing phase during the sliding and during the tilt-and-sliding opening phase.



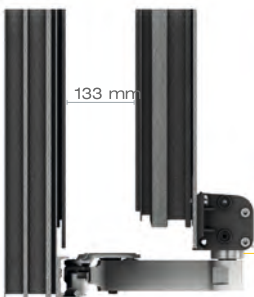
Excellent performances.

SlideArt TS offers top performances:

- 150 kg weight capacity (with additional kit)
- field of application extended up to 1700 mm in width and 2700 mm in height.

Optimal sliding.

Thanks to the rollers that slide on the bottom guide in anodized extruded aluminium, to the materials used and to the special shape of the upper sliding guides.



Maximum design freedom.

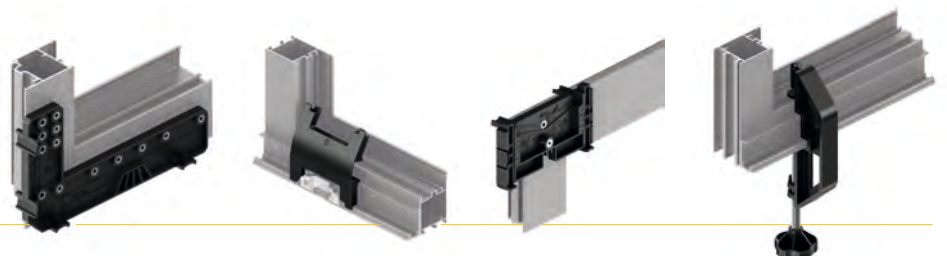
The new structure of the bottom rollers makes it possible to apply SlideArt TS even to highly tubular profiles and to overcome obstacles such as handles or hinges on the secondary leaf.

Main characteristics:

- rebate height 7 + 12 mm
- roller reach 133 mm
- suited to all profiles.

Easy to assemble.

Specific jig and stainless steel screws with TORX® imprint for faster and easier assembly.

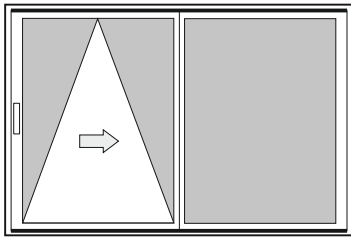


SlideArt TS, the first tilt and sliding system specifically designed for aluminium frames.

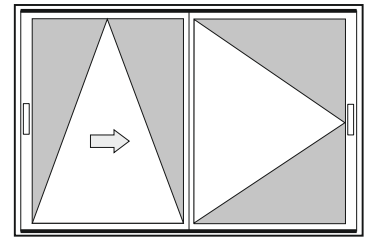
The same hold of a standard leaf combined with the utmost versatility and security. Finally, the quality of aluminium tilt-and-slide parallel mechanisms can count on **Savio's specific and innovative know-how.**



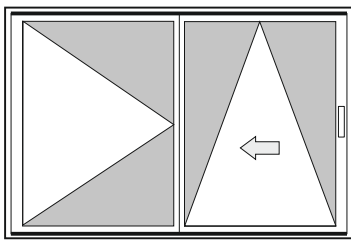
Combinations



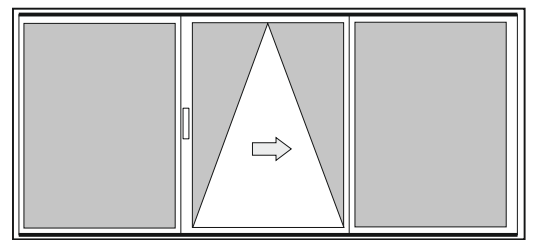
E.g.: LH sash with lateral fixed light



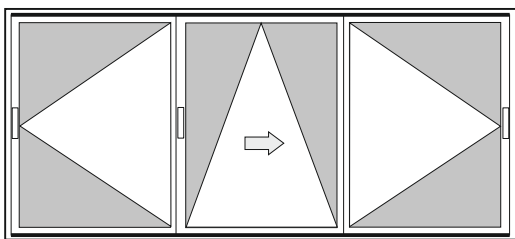
E.g.: LH sash with opening leaf



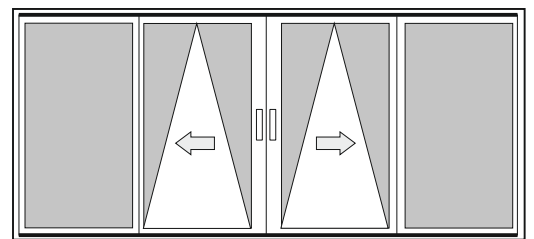
E.g.: RH sash with lateral opening leaf



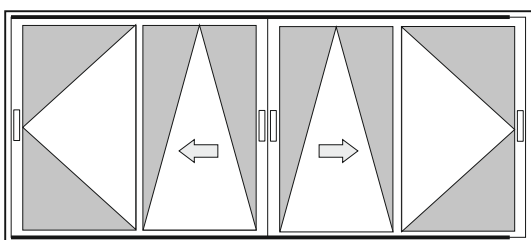
E.g.: LH sash with lateral fixed lights



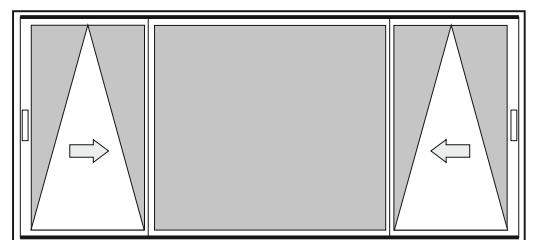
E.g.: LH sash with opening leaves



E.g.: LH/RH sashes with lateral fixed lights

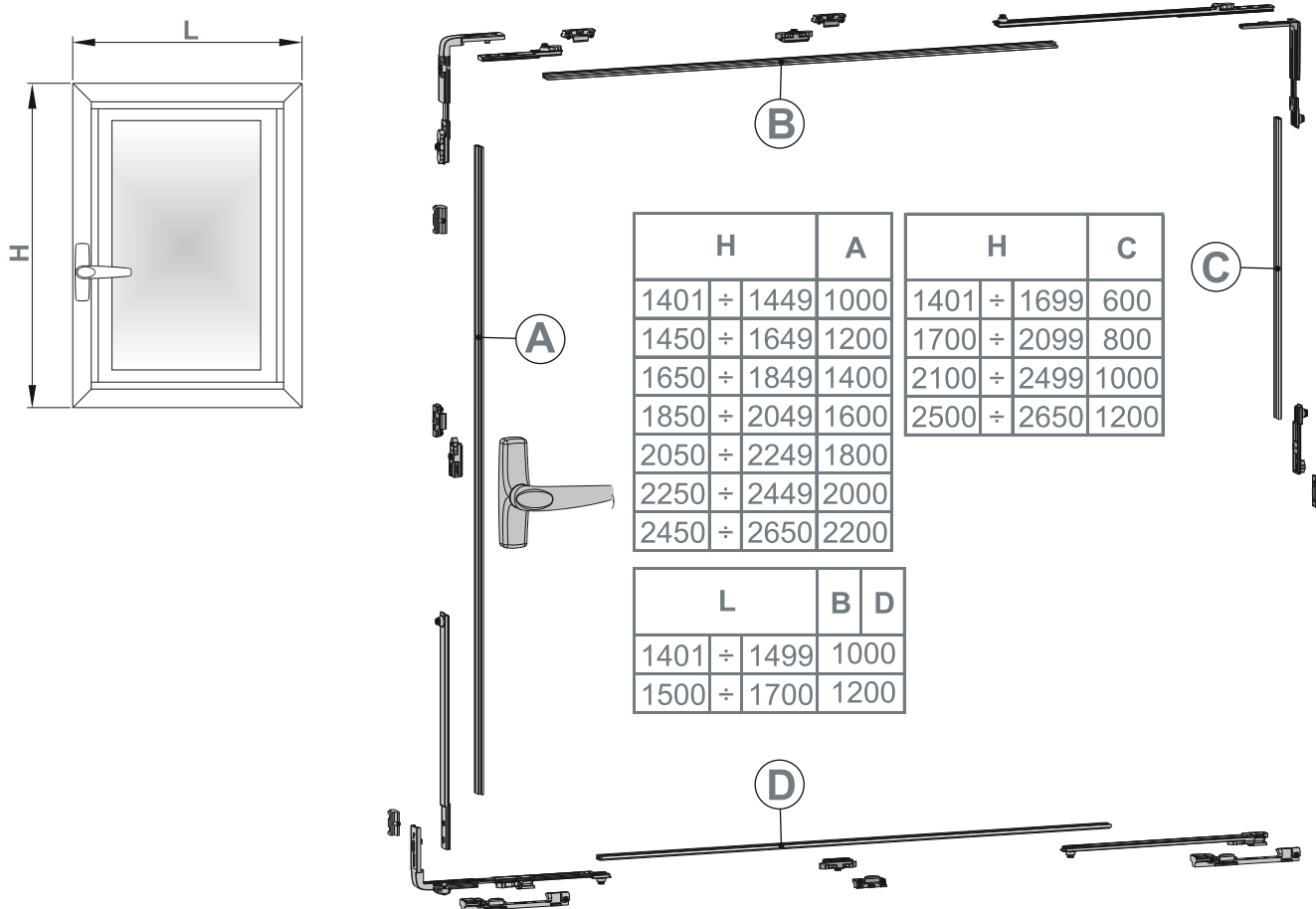


E.g.: LH/RH sashes with 2 opening leaves



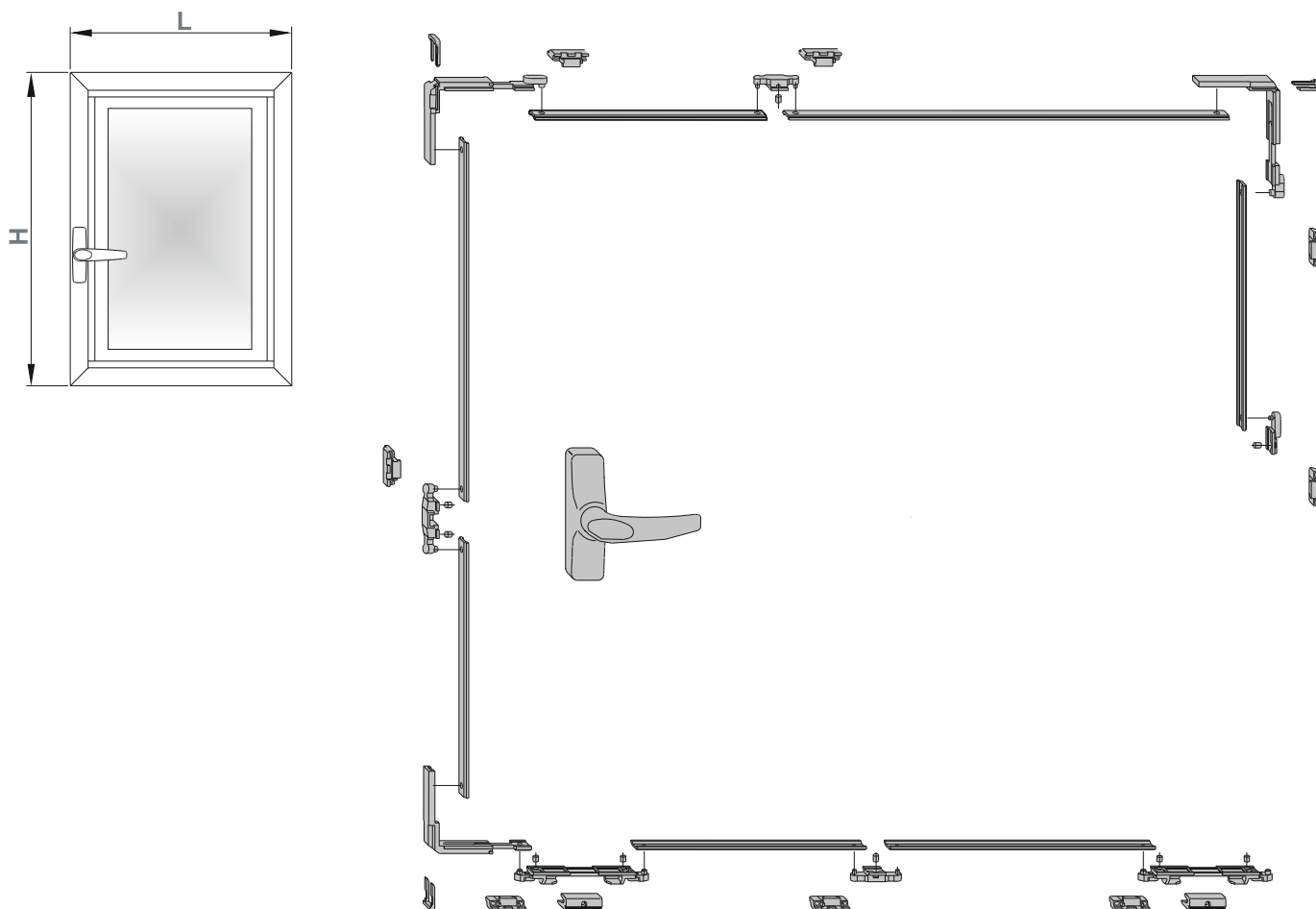
E.g.: LH/RH sashes with central fixed light

Closing kit for Eurogroove and NC International profiles (with the kit art. 3200.620R/L)



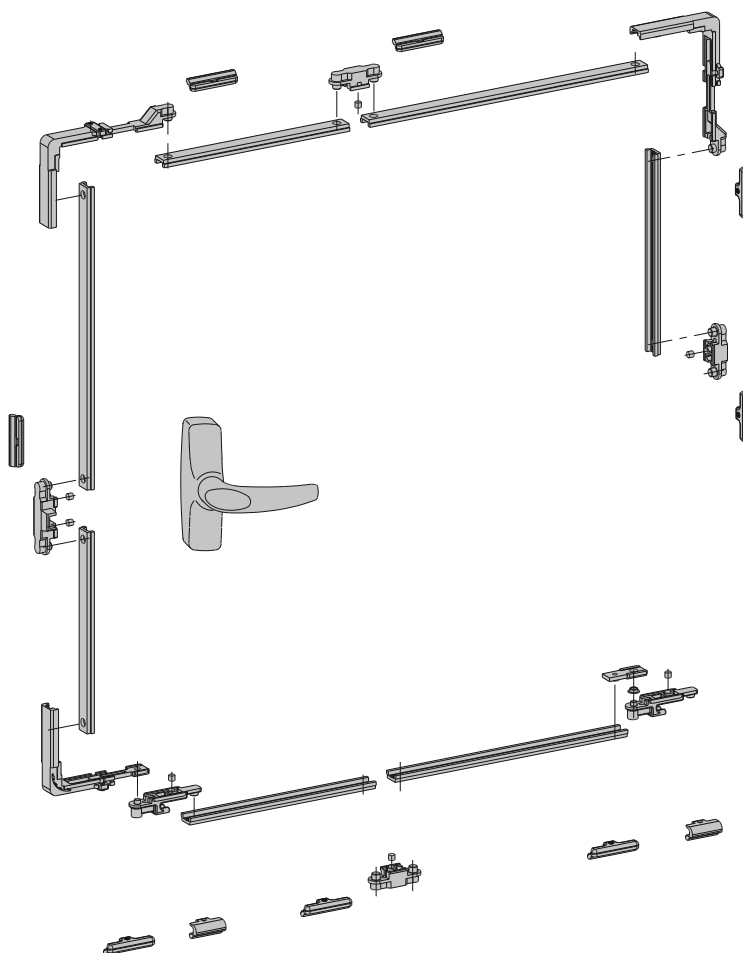
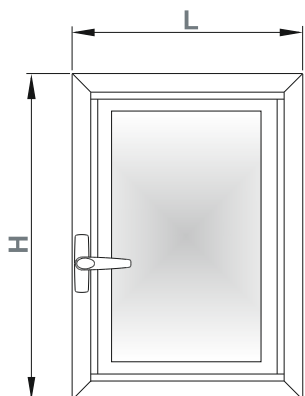
Description	Art.	Pcs.	Sash dimensions							
			L mm	700 1100		1101 1400		1401 1700		
			H mm	850 1400	1401 2650	850 1400	1401 2650	850 1400	1401 2650	
Kit of left hand rollers	2401.1	1								
Kit of right hand rollers	2401.2	1	1	1	1	1	1	1	1	
Guides and covers	2406/1100	1	1	1						
	2406/1400	1			1	1				
	2406/1700	1					1	1		
4 closing point kit	3200.620R 3200.620L	5	1	1	1	1	1	1	1	
6 closing points kit	3200.820R 3200.820L	5		1		1			1	
Intermediate closing point	3200.810	40						2	2	

Closing kit for Eurogroove and NC International (with the kit art. 2410)



Description	Art.	Pcs.	Sash dimensions						
			L	700		1101		1401	
			mm	1100	1400	1400	2700	1400	2700
Kit of left hand rollers	2401.1	1		1	1	1	1	1	
Kit of right hand rollers	2401.2	1		1	1	1	1	1	
Guides and covers	2406/1100	1	1	1					
	2406/1400	1			1	1			
	2406/1700	1					1	1	
Closing kit	2410	5	1	1	1	1	1	1	
Locking piece	1243.710	40					2	2	
Adjustable keeper	1243.721	40		2		2	2	4	
Upper corner drive	1243.790	10		1		1		1	

Closing kit for R groove profiles (with the kit art. 2410.1 and 2410.2)

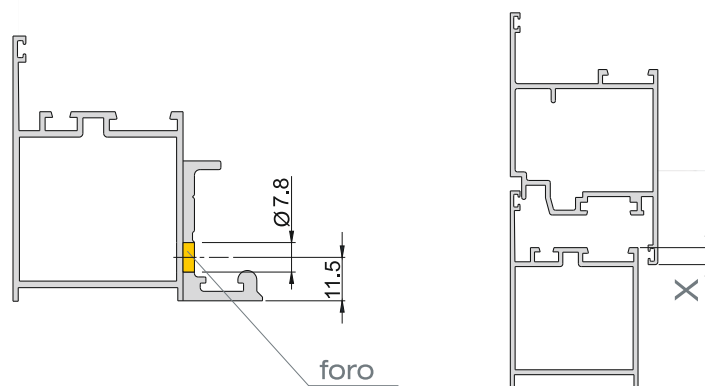
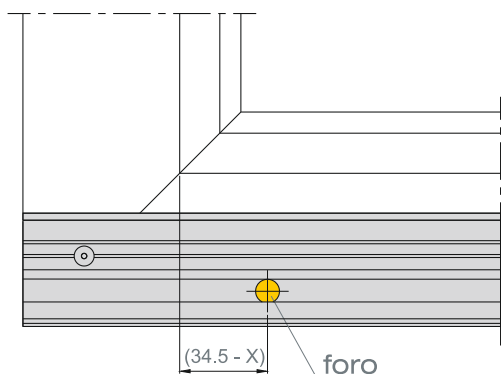


Description	R 40	R 50	Pcs.	Sash dimensions						
				L	700		1101		1401	
				mm	1100	1400	1400	2700	1400	2700
Kit of left hand rollers	2401.1		1							
Kit of right hand rollers	2401.2		1	1	1	1	1	1	1	
Guides and covers	2406/1100		1	1	1					
	2406/1400		1			1	1			
	2406/1700		1					1	1	
Closing kit	2410.1	2410.2	5	1	1	1	1	1	1	
Locking piece	1243.701	1243.713	40					2	2	
Adjustable keeper	1243.725		40		2		2	2	4	
Upper corner drive	1246.703	1243.714	10		1		1		1	

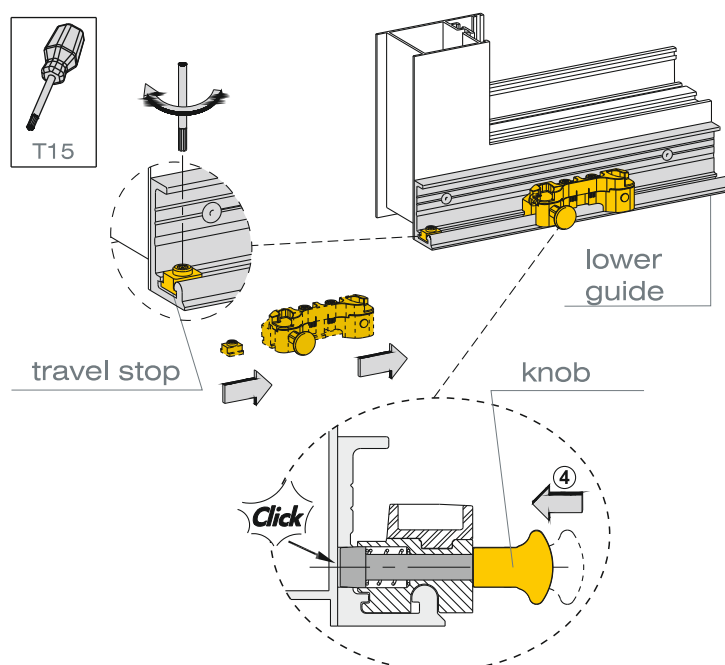
Releasable and adjustable return sash piece art. 2401.805

To use on the alongside sash with bolts.

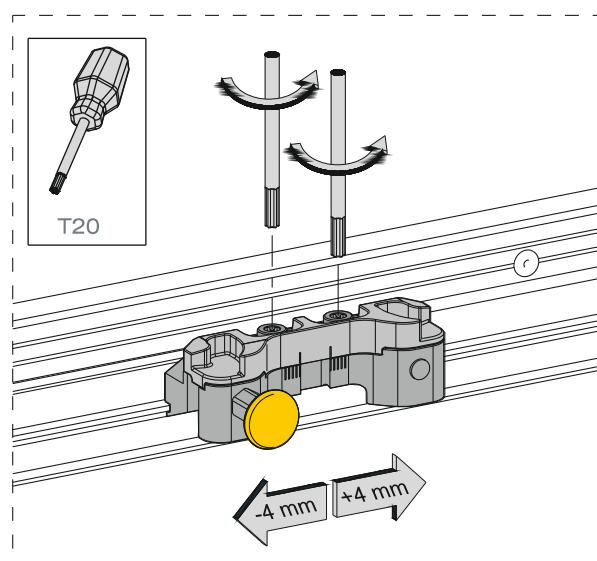
Differently to the standard one provided in the package, it can be easily moved to extend the travel of the main sash and then to act on the bolts. In addition, the standard return sash piece provided, prevents the escape of the roller during the operation.



POSITIONING ON THE LOWER GUIDE

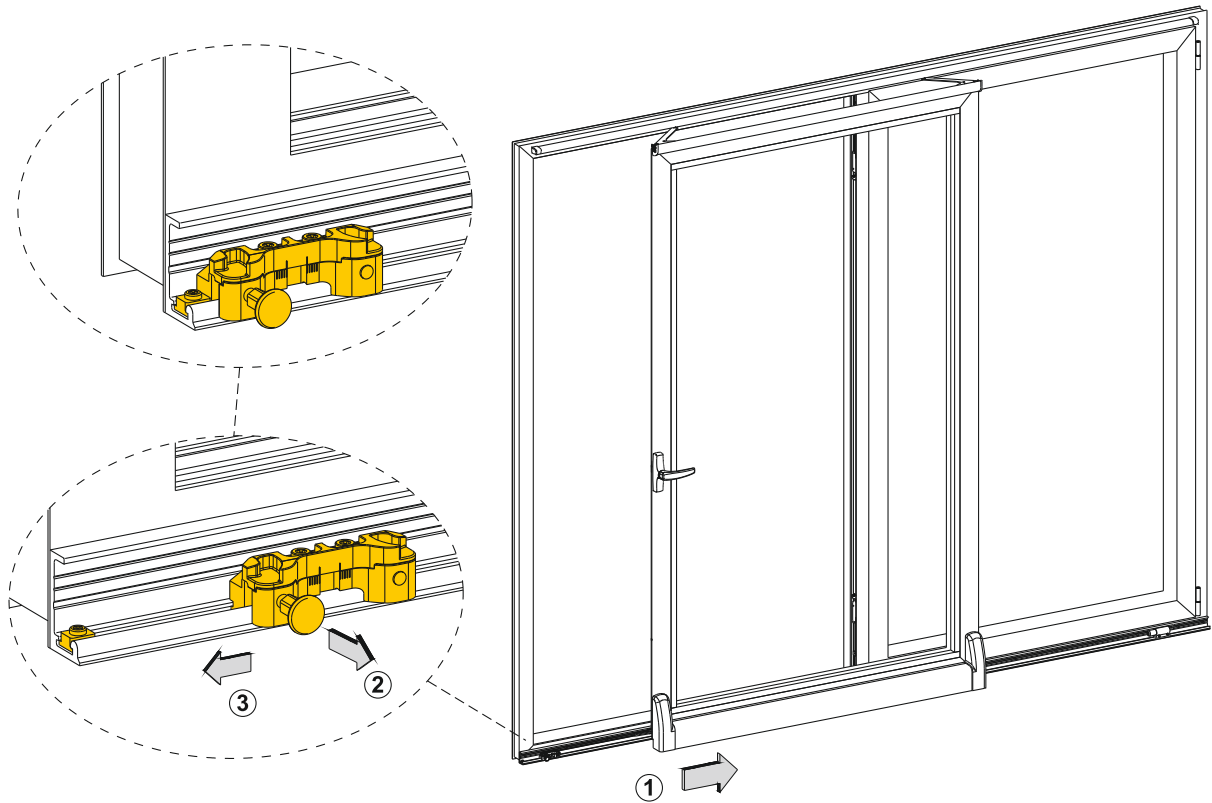


LATERAL ADJUSTMENT

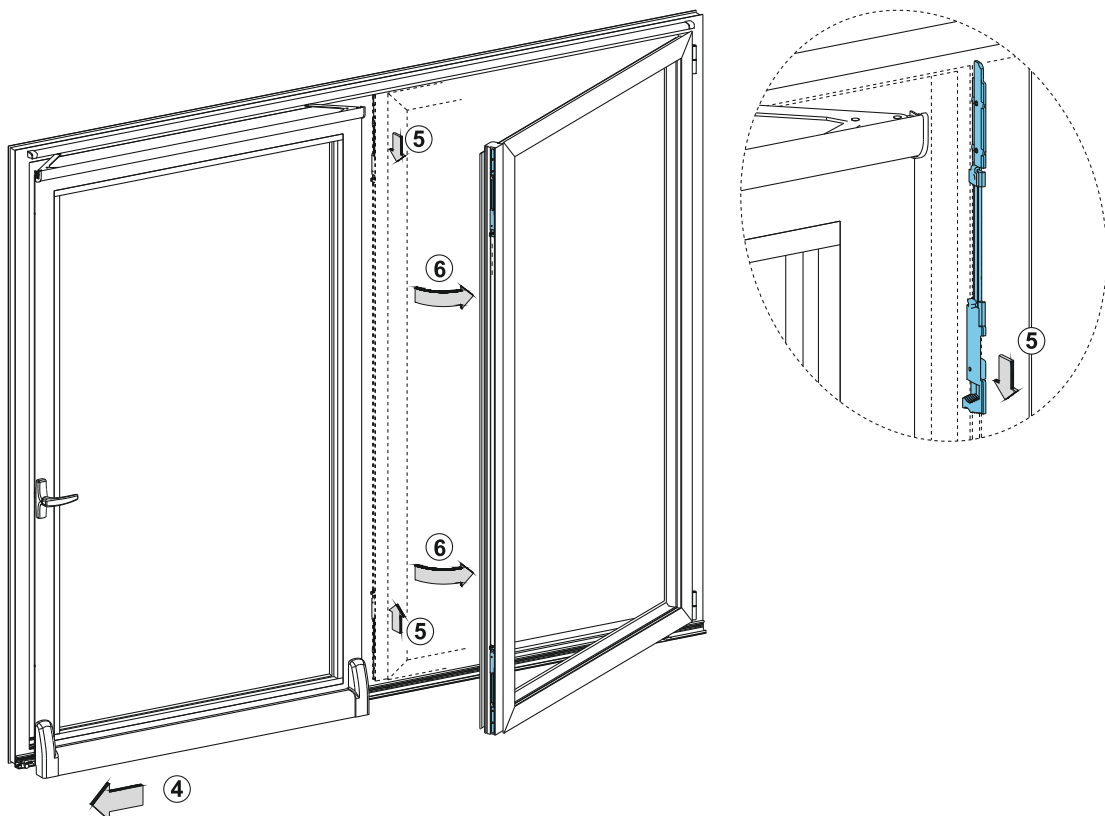


Use example



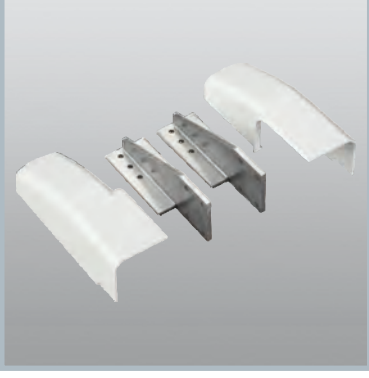

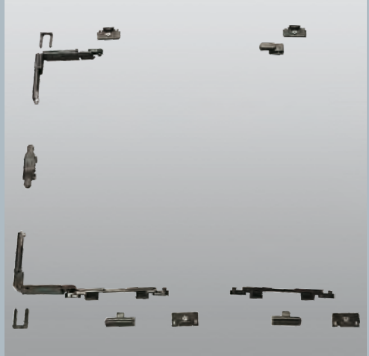
SLIDING ON THE LOWER GUIDE



MAIN SASH MOVING, BOLT RELEASE AND ALONGSIDE SASH OPENING



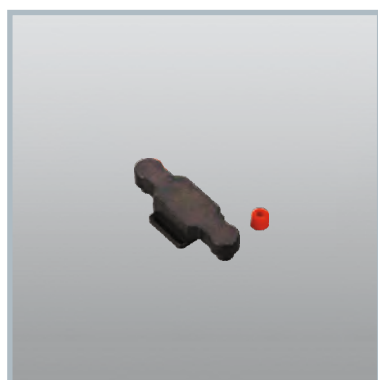
Basic kit, closing kit, guides and covers

	Article	Description	Pcs.	Finishes
	2401.1	SLIDEART TS Basic kit of left hand rollers. Complete kit with 1 pair of rollers in aluminium, die-cast zamak and stainless steel, 2 guide sliding piece, 1 LH tilt arm and 1 RH tilt arm in stainless steel and zamak, 2 stainless steel counterplates, screw spacer and 2 reinforcements in black nylon, 2 TORX® (T25) cap screws M5x12, 5 TORX® (T25) cap screws 4.8x25, 9 TORX® (T25) cap screws 4.8x50 and 8 TORX® (T20) countersunk head screws 4.2x25 in stainless steel. Weight capacity: 2 rollers max 100 Kg.	1	
	2401.2	SLIDEART TS Like 2401.1 but RH version.	1	
	Article	Description	Pcs.	Finishes
	2406/1100	Guides and covers (L=from 700 to 1100 mm) in aluminium, zamak caps, 1 stroke end in aluminium and nylon.	1	1013, 9005, 9010, BL10, C, F, GR217, NE, SILV, ZE
	2406/1400	Like 2406/1100 but L=from 1101 to 1400 mm.	1	1013, 9005, 9010, BL10, C, F, GR217, NE, SILV, ZE
	2406/1700	Like 2406/1100 but L=from 1401 to 1700 mm.	1	1013, 9005, 9010, BL10, C, F, GR217, NE, SILV, ZE
	Article	Description	Pcs.	Finishes
2401.701	Kit of 2 aluminium reinforcements, 2 zamak caps, 4 TORX® (T25) cap screws 4.8x25 and 4 TORX® (T25) cap screws M5x12 in stainless steel.	1	1013, 9005, 9010, BL10, C, GR217, SILV	
	Article	Description	Pcs.	Finishes
	3200.620R	SLIDEART TS RH 4 closing point kit, in black galvanized zamak, premounted TORX® in stainless steel 304 and 430.	5	
	3200.620L	SLIDEART TS LH 4 closing point kit, in black galvanized zamak, premounted TORX® in stainless steel 304 and 430.	5	
	Article	Description	Pcs.	Finishes
	2410	SLIDEART TS Closing kit. Basic kit (4 locking points) with corner devices, transmission and movement devices, hooks and closing point in black zamak, screws in stainless steel 304. For Eurogroove and NC International profiles.	5	
	2410.1	SLIDEART TS Like 2410 but for R 40 profiles..	5	
	2410.2	SLIDEART TS Like 2410 but for R 50 profiles..	5	

Supplementary closing points



Article	Description	Pcs.	Finishes
1243.701	Locking piece in black galvanized zamak, 1 polyurethane cap. For R 40 profiles.	40	



Article	Description	Pcs.	Finishes
1243.710	Locking piece in black galvanized zamak, 1 polyurethane cap. For Eurogroove and NC International profiles.	40	



Article	Description	Pcs.	Finishes
1243.713	Locking piece in black galvanized zamak, 1 polyurethane cap. For R 50 profiles.	40	



Article	Description	Pcs.	Finishes
1243.714	Upper corner drive in black galvanized zamack. For R 50 profiles.	10	



Article	Description	Pcs.	Finishes
1243.721	Adjustable keeper in black galvanized zamak, 2 pre-assembled grub screws M5x12 and 1 countersunk head screw M4x8 in stainless steel 304. For Eurogroove and NC International profiles.	40	

Supplementary closing points



Article	Description	Pcs.	Finishes
1243.725	Adjustable keeper in black galvanized zamak, 1 pre-assembled grub screw M5x6 in stainless steel 304. For R 40 - R 50 profiles .	40	



Article	Description	Pcs.	Finishes
1243.790	Upper corner drive in black galvanized zamak. For Eurogroove and NC International profiles .	10	



Article	Description	Pcs.	Finishes
1246.703	Upper corner drive in aluminium and black galvanized zamack. For R 40 profiles .	10	



Article	Description	Pcs.	Finishes
3200.810	(patented) Intermediate closing point in white galvanized zamak, premounted screws in stainless steel 304 and 430, and adjustable keeper.	40	



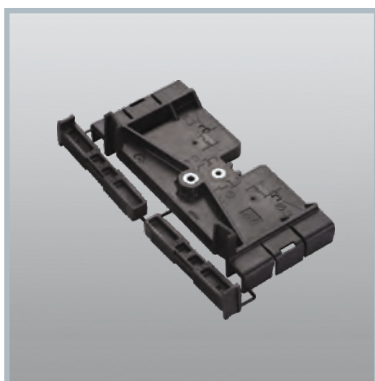
Article	Description	Pcs.	Finishes
3200.820R	(patented) Right kit for 6 closing points in white galvanized zamak, premounted screws in stainless steel 304 and 430.	5	
3200.820L	Like 3200.820R but LH version.	5	



Article	Description	Pcs.	Finishes
2401.901	Roller support drilling jig, in black nylon, with co-molded steel bushings.	1	



Article	Description	Pcs.	Finishes
2401.902	Fixed return sash piece positioning jig, in black nylon.	1	



Article	Description	Pcs.	Finishes
2406.901	Upper guide drilling jig, in black nylon, with co-molded steel bushings.	1	



Article	Description	Pcs.	Finishes
2406.902	Lower guide positioning jig, in black nylon and white galvanized steel.	1	



Article	Description	Pcs.	Finishes
3200.956	Accessories positioning jig in brown nylon.	5	

Complementary accessories



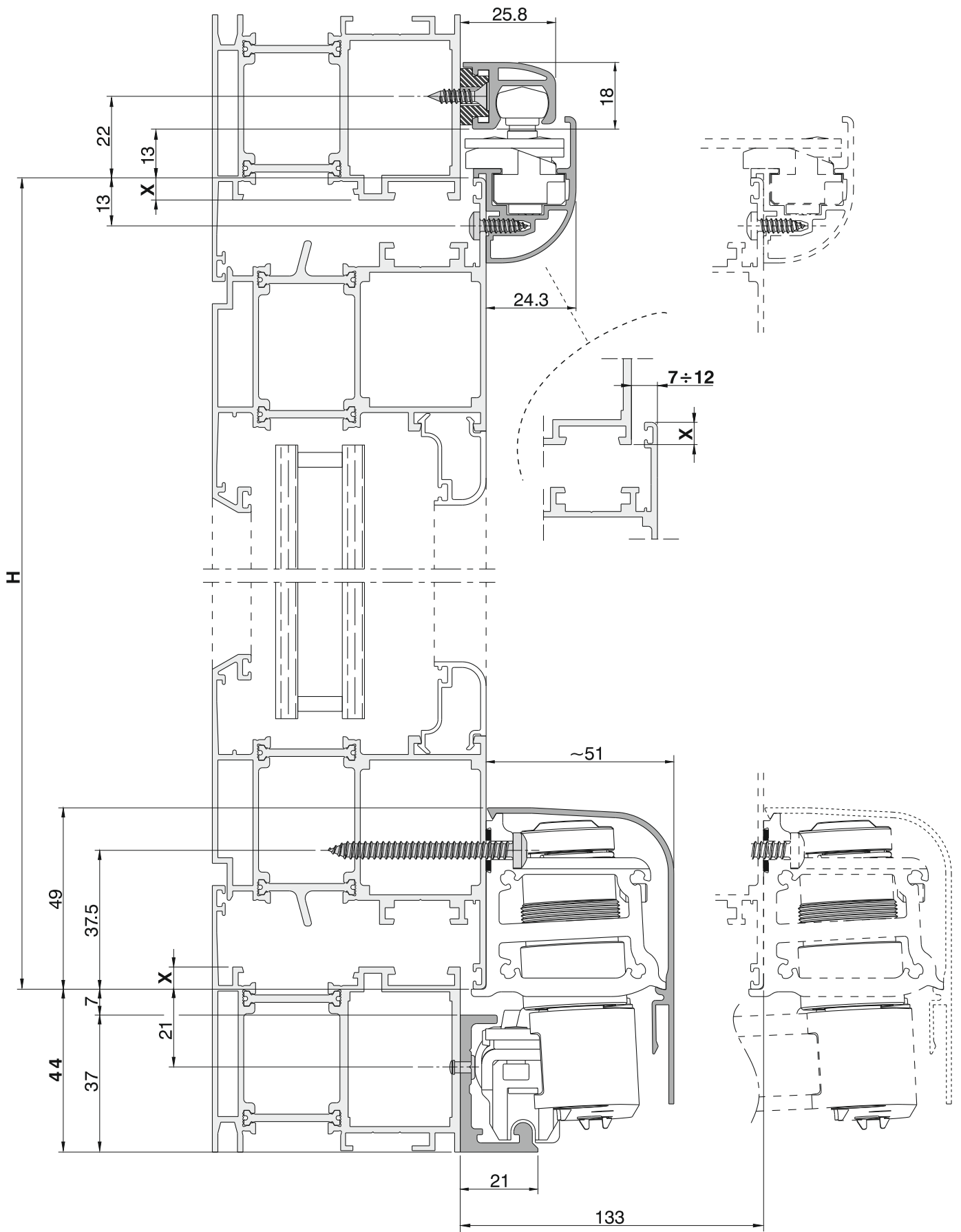
Article	Description	Pcs.	Finishes
2401.800	Supplementary arm in stainless steel and white galvanized zamak.	5	



Article	Description	Pcs.	Finishes
2401.805	Releasable return sash piece in zamak, cap and handle in nylon.	5	

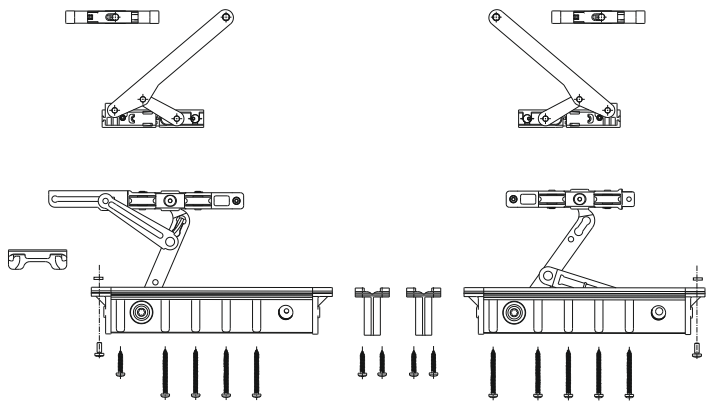


Article	Description	Pcs.	Finishes
2406.701	Cover extension in aluminium and nylon. To use for window applications.	1	1013, 9005, 9010, BL10, C, F, GR217, NE, SILV, ZE

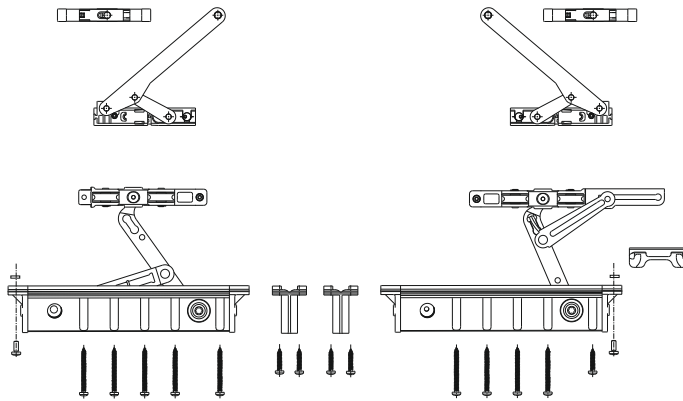


Basic kit, closing kit, guides and covers

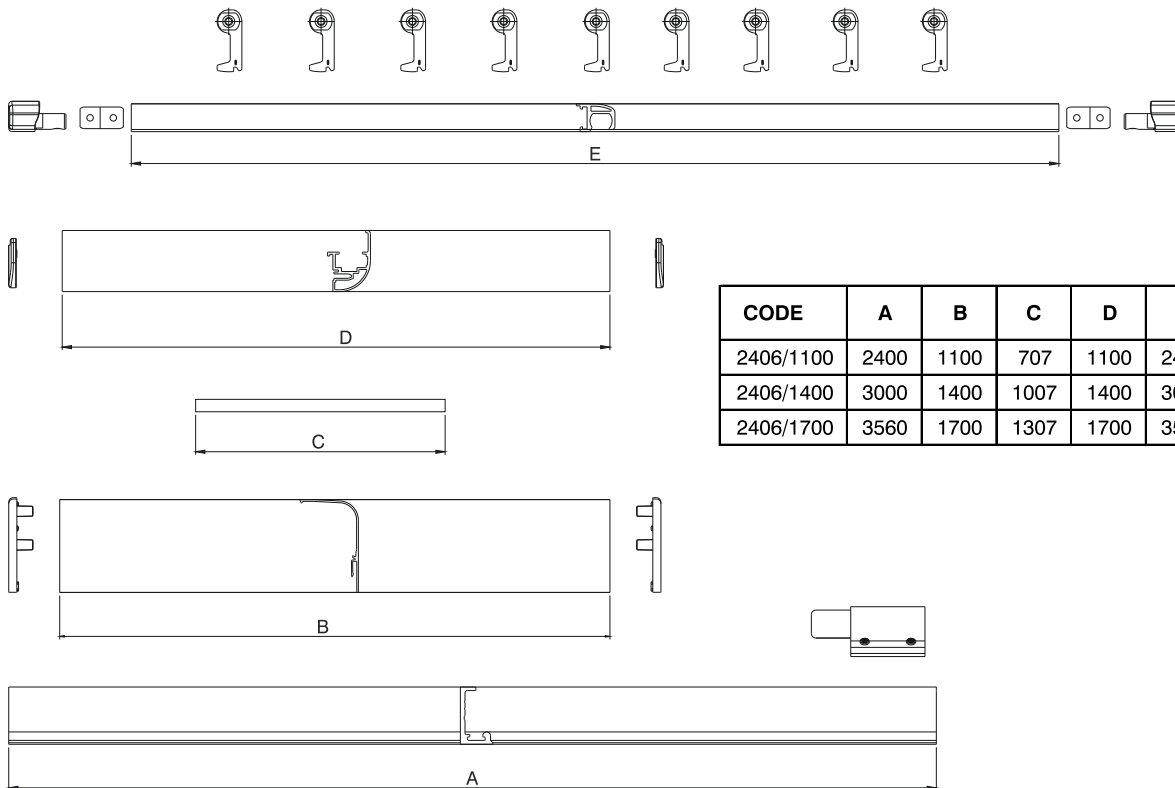
2401.1



2401.2

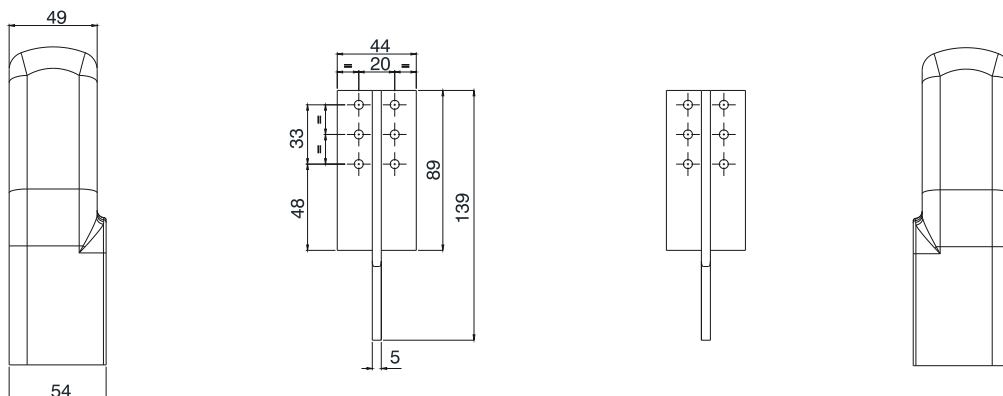


2406/1100
2406/1400
2406/1700



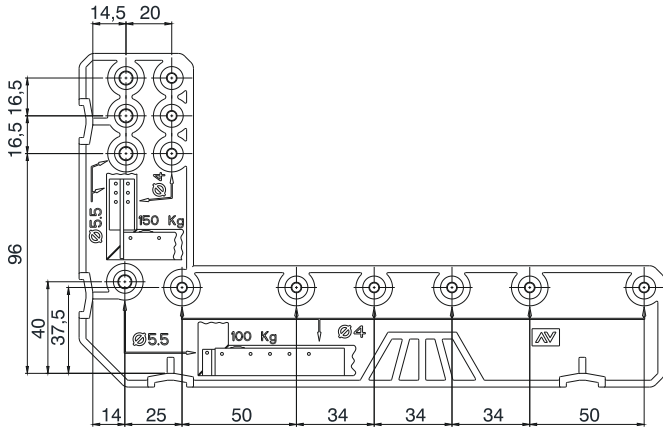
CODE	A	B	C	D	E
2406/1100	2400	1100	707	1100	2400
2406/1400	3000	1400	1007	1400	3000
2406/1700	3560	1700	1307	1700	3560

2401.701

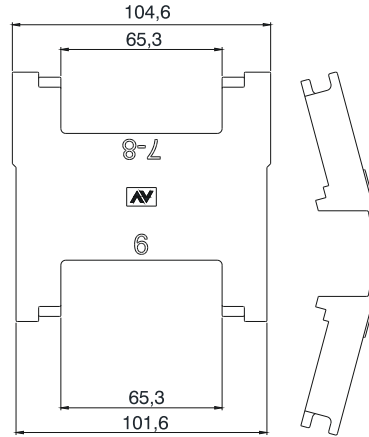


Jigs and complementary accessories

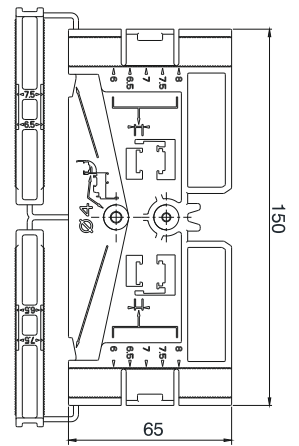
2401.901



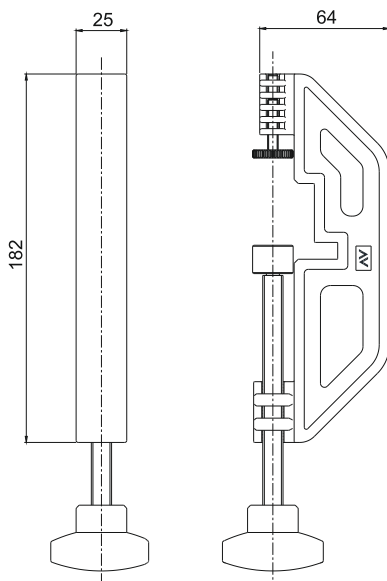
2401.902



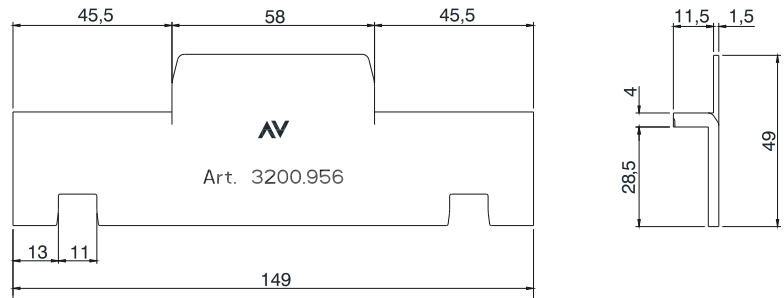
2406.901



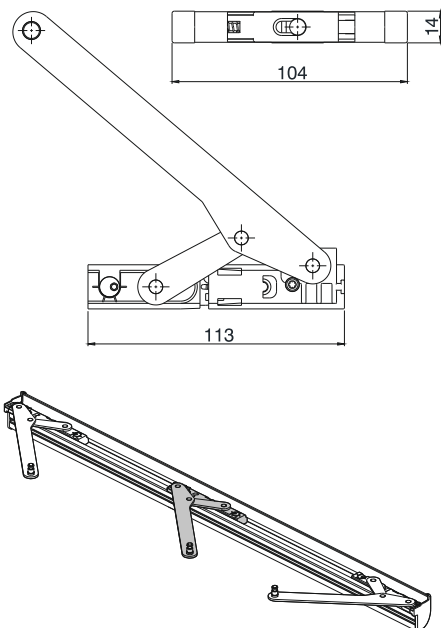
2406.902



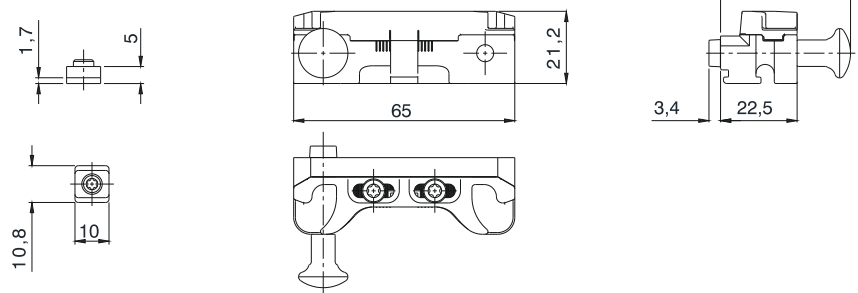
3200.956



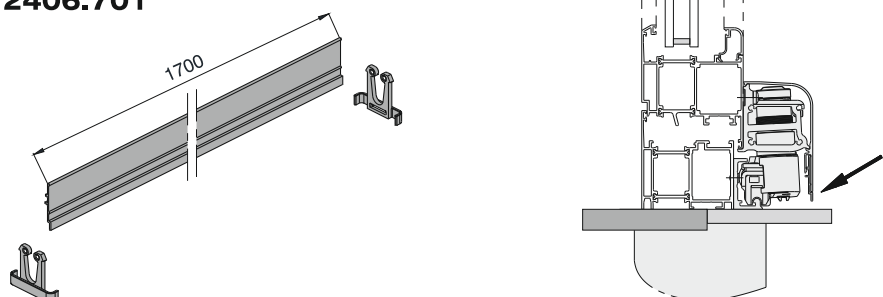
2401.800



2401.805



2406.701





Savio S.p.A.

Via Torino, 25 (s.s. 25) - 10050 Chiusa S. Michele (TO)

tel. +39 011 964 3464 - fax +39 011 964 3474

www.savio.it - export@savio.it