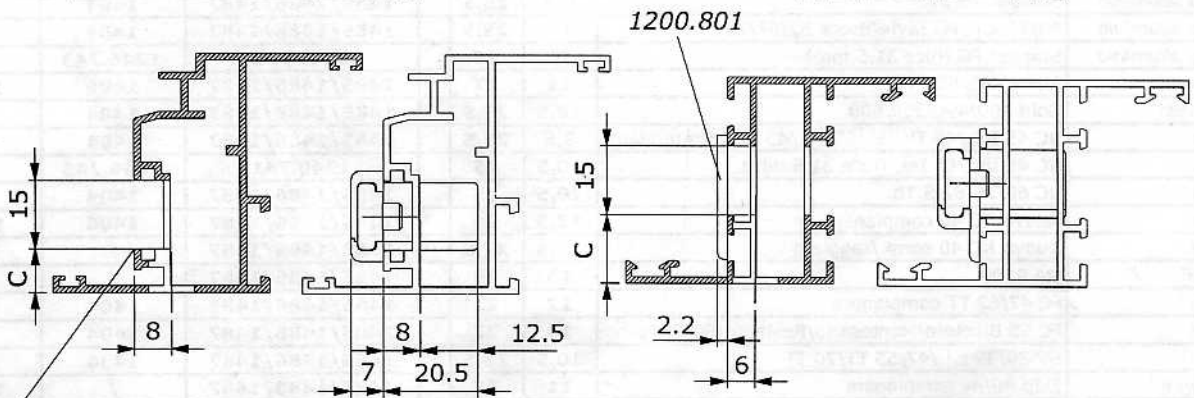
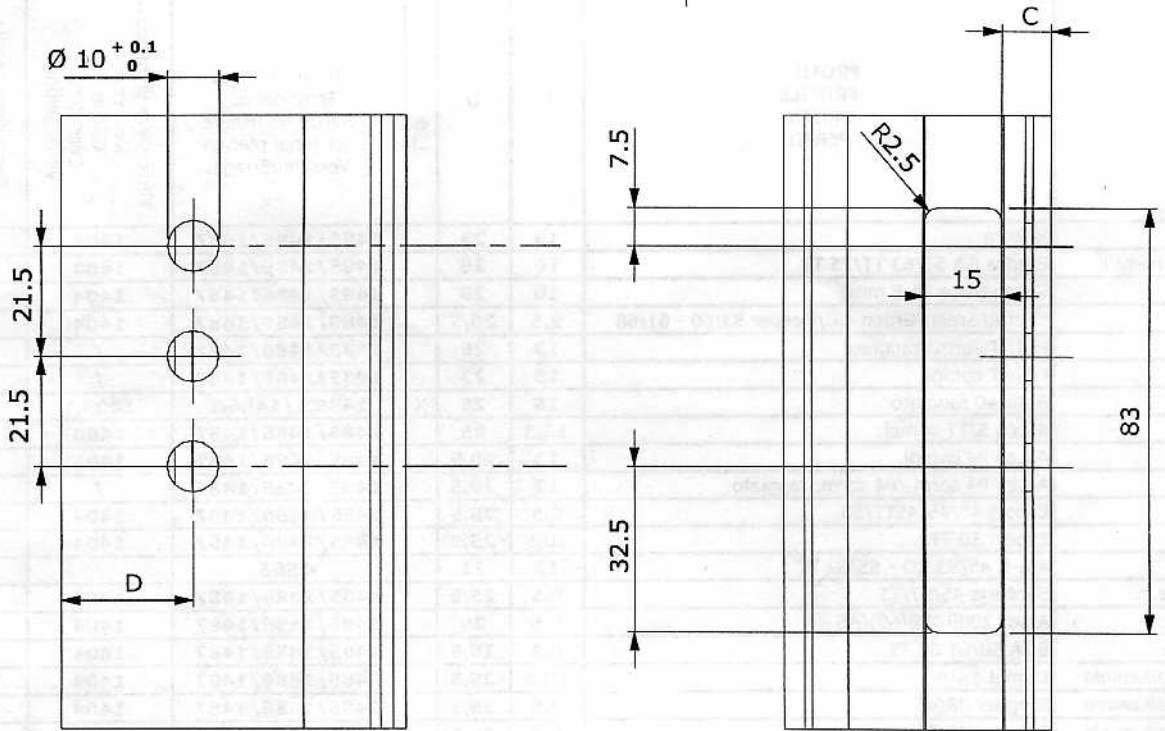


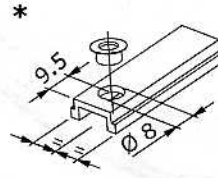
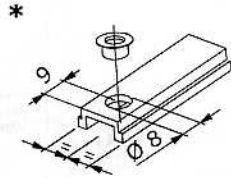
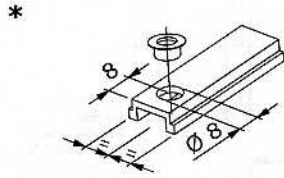
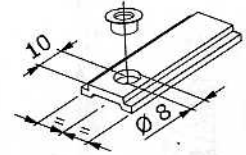
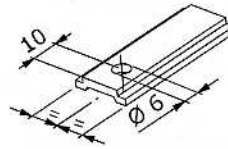
Q =  $\varnothing$  8 mm | 1201/8

Q =  $\varnothing$  7 mm | 1201/7

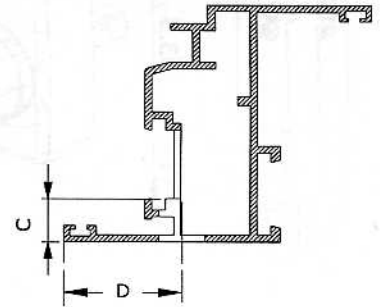


Lavorazione a filo costa/ Machining against profile' s border  
 Usinage dans la rainure du profil/ Mecanizado contra el borde del perfil  
 Herstellung gegen das Profilrippe  
 C max = 15 mm

**Lavorazione aste.  
Rods machining.  
Usinage des tringles.  
Mecanizados pletinas.  
Stanzen der Schubstangen.**



- \* Solo R 40 e simili.
- \* Only for R 40 profiles and similars.
- \* Seulement pour profils R 40 et semblables.
- \* Sólo para perfiles R 40 y semejantes.
- \* Nur für R 40 und gleichartigen Profile.



	PROFILO PROFILE PROFIL PERFIL	C	D	1200.801	Terminali asta Terminal rod Sortie de tringle Terminal pletina Verschlussriegel	Ferrogliera semplice Keeper Gâche Cerradero Verriegelung	Ferrogliera doppia Double keeper Gâche double Cerradero doble Doppelte Verriegelung
A.ser.	Riviera	15	23		1485/1486/1487	1404	1415
Agnelli metalli	Esedra GA 53/63 TT/75 TT	10	25		1485/1486/1487	1404	1415
Alcan	Green (luce 31,5 mm)	10	25		1485/1486/1487	1404	1415
Alcan	Cristal/Green/Green c.i./Keeper 53/60 - 61/68	9,5	25,5		1485/1486/1487	1404	1415
Alcan	POINT sorm./raggiato	13	28		1485/1486/1487	/	1416
Alcan	POINT compl.	13	23		1485/1486/1487	/	1415.1
Alcoa	R 40/40 raggiato	15	28	X	1485.1/1486.1	1405.1	1405.3
All.co	All.co 5/TT compl.	13,5	25		1485/1486/1487	1406	1415.1
All.co	All.co P4 compl.	13	29,5		1485/1486/1487	1406	1415.1
All.co	All.co P4 sorm./P4 sorm. raggiato	12	29,5		1485/1486/1487	/	1416
All.co	Export 40/45/45TT/50	9,5	25,5		1485/1486/1487	1404	1415
All.co	Export 50 TT	10,5	25,5		1485/1486/1487	1404	1415
Alu-K	Alu-K 45/53 CO - 55/62 TT	12	21		K 595	/	K 590
Alu-m.e.c.	Syntesis 45/57/TT	9,5	25,5		1485/1486/1487	1404	1415
Alusuisse	Alsec 2000 (59/69)/AS 46	9,5	25		1485/1486/1487	1404	1415
Bodega	BGA 50/BT 60 TT	9,5	25,5		1485/1486/1487	1404	1415
Hydro alluminio	Domal Twin	10,5	25,5		1485/1486/1487	1404	1415
Hydro alluminio	Stopper 38/45	9,5	25,5		1485/1486/1487	1404	1415
Hydro alluminio	Stopper 45/52	9,5	25,5		1485/1486/1487	1404	1415
Hydro alluminio	PG/PG c.i./PG Style/Break 52/62/70	10	25,5		1485/1486/1487	1404	1415
Hydro alluminio	Stopper PG (luce 31,5 mm)	10	25		1246.741	1246.743	/
Indinvest	Alpha 445/658 TT	15	27		1485/1486/1487	1406	1415.1
Indinvest	Gold 400/490/500/600	10,5	25,5		1485/1486/1487	1404	1415
Metra	NC 45 Int./45 Th./55/55 Th./45 Int. arrotondato	9,5	25,5		1485/1486/1487	1404	1415
Metra	NC 45 Int./68 Int. (luce 31,5 mm)	10,5	25		1246.741	1246.743	/
Metra	NC 68/75/82 S.Th.	10,5	25		1485/1486/1487	1404	1415
Metra	Nuovo NC 40 complanare	12,5	24		1485/1486/1487	1406	1415.1
Metra	Nuovo NC 40 sorm./raggiato	12,5	27,5		1485/1486/1487	/	1416
Morelli	MA 9600	13	28		1485/1486/1487	/	1416
Ocma	FC 47/62 TT complanare	12	22		1485/1486/1487	1404	1415
Ocma	FC 55 Bicolore/Montecarlo/Restauro/60 TT Polo	14	22		1485/1486/1487	1404	1415
Ocma	SV 39/39 c.i./47/55 TT/70 TT	10,5	25,5		1485/1486/1487	1404	1415
Passerini	Ekip 40/ev complanare	11	25		1485/1486/1487	/	1415.2
Passerini	Ekip 40/ev sormonto	11	29		1485/1486/1487	/	1416
Passerini	Ekip Maastricht 53/TH 60/TH 68	10	25,5		1485/1486/1487	1404	1415
Passerini	Ekip Thermo 53/58	11	24,5		1485/1486/1487	/	1415.2
Ponziosud	New Tec 50/52 TT/60 TT/68 TT	15	28	X	1485.1/1486.1	1405.1	1405.3
Profilati	Eku 53/53 TT/64 TT/72 TT	10,5	25,5		1485/1486/1487	1404	1415
Profilati	PE 40 sist.1 sorm./compl., PE 50/58 TT	13	28		1485/1486/1487	/	1416